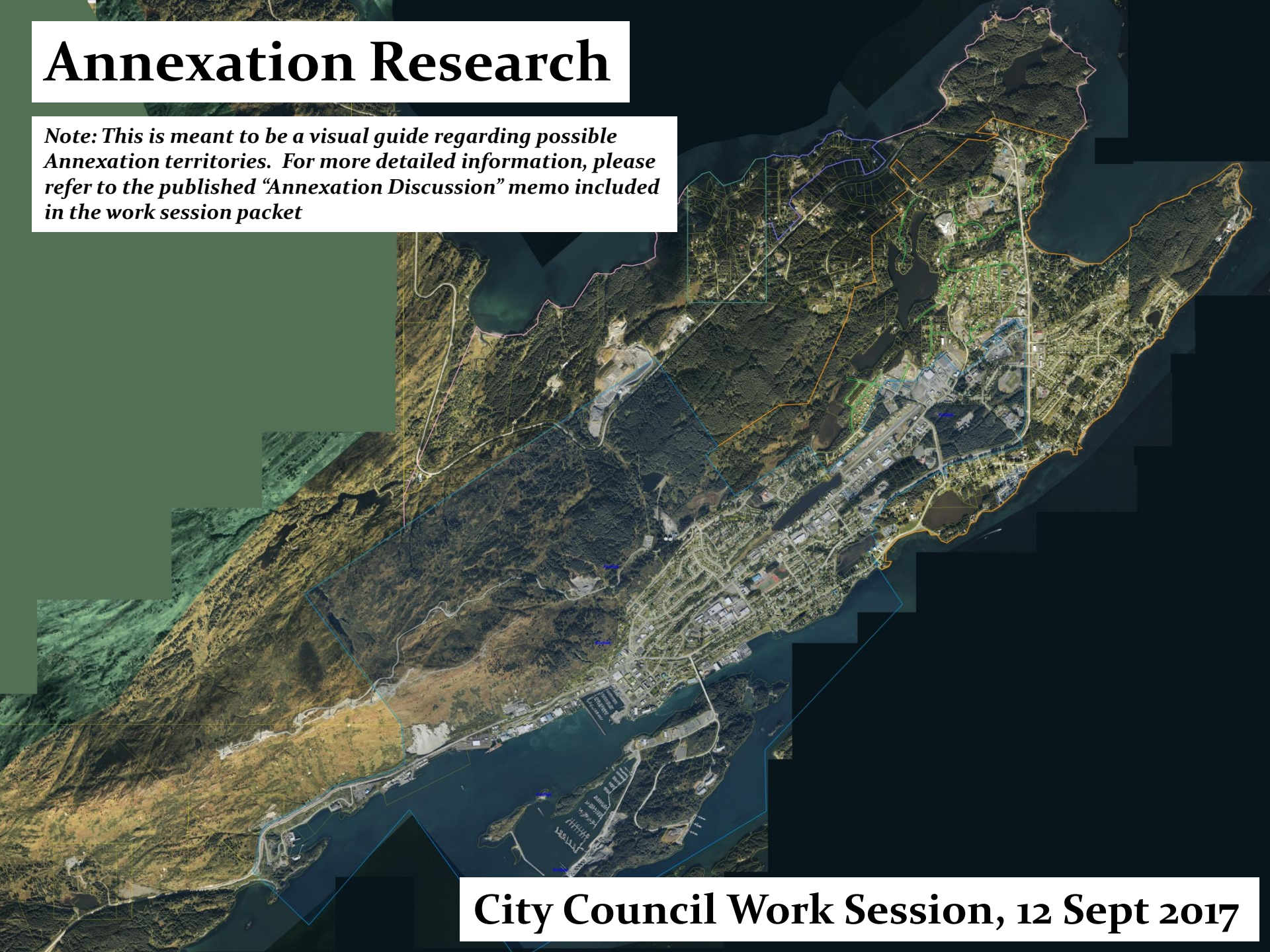


Annexation Research

Note: This is meant to be a visual guide regarding possible Annexation territories. For more detailed information, please refer to the published "Annexation Discussion" memo included in the work session packet



City Council Work Session, 12 Sept 2017

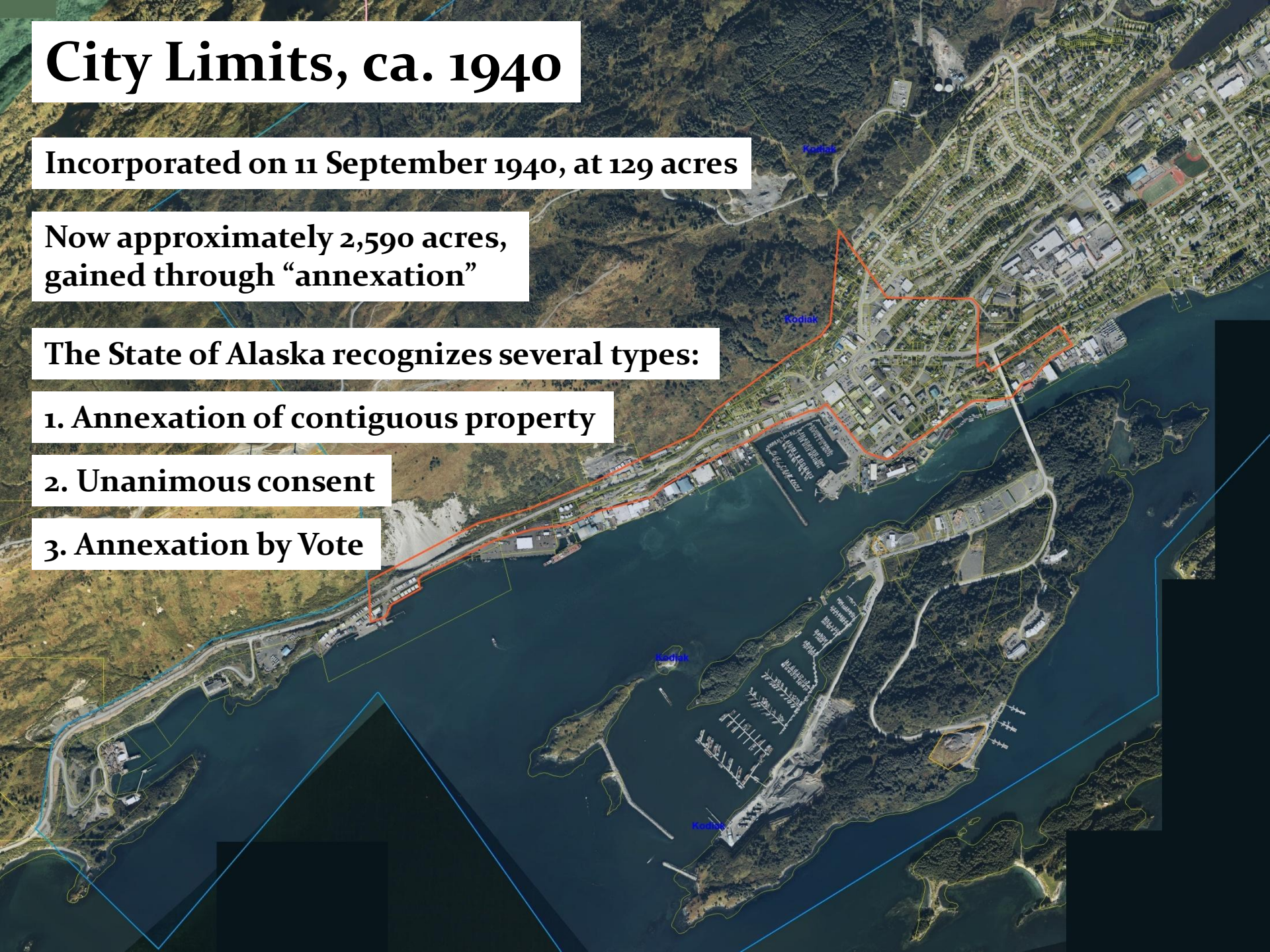
City Limits, ca. 1940

Incorporated on 11 September 1940, at 129 acres

Now approximately 2,590 acres,
gained through “annexation”

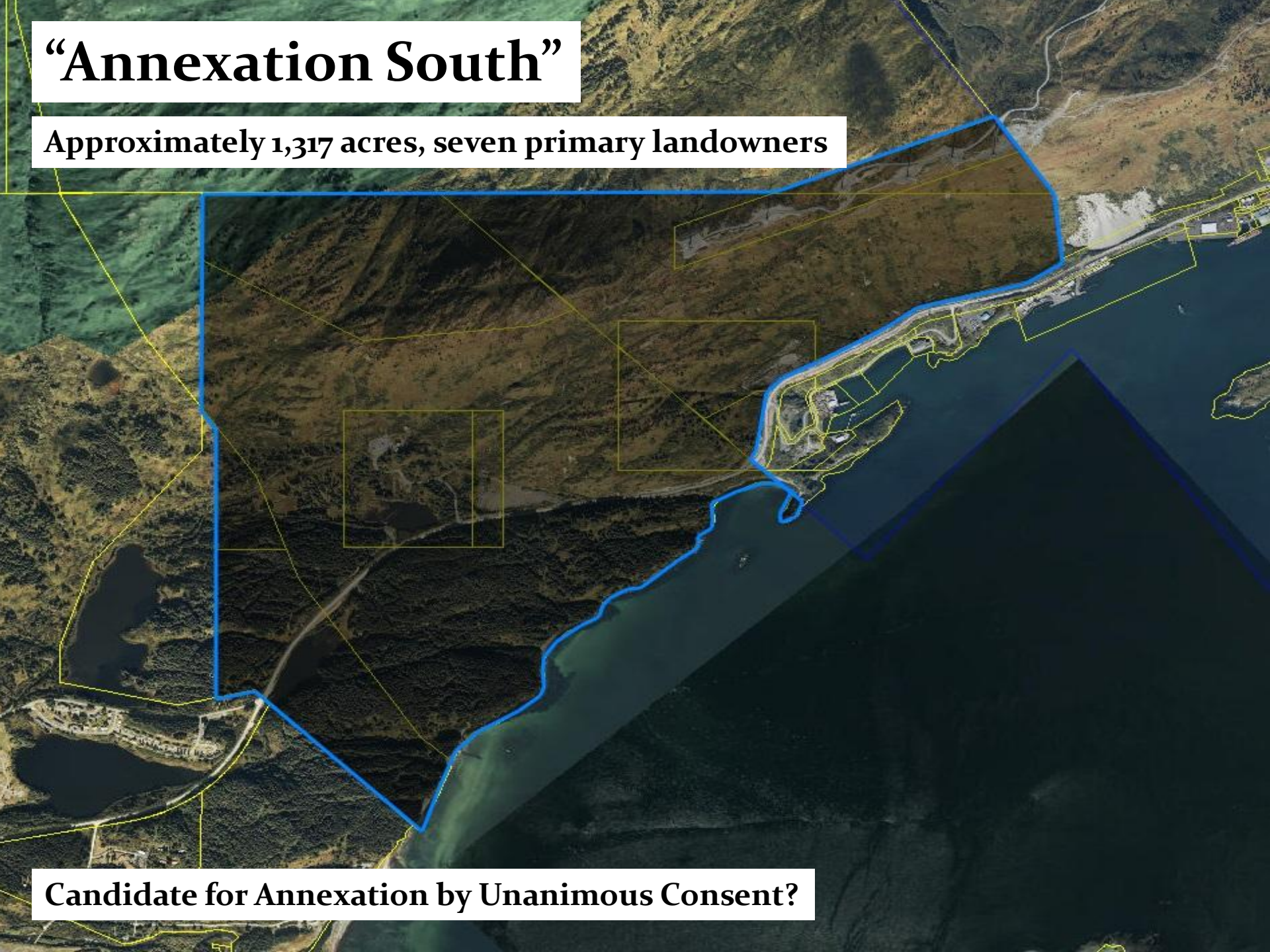
The State of Alaska recognizes several types:

1. Annexation of contiguous property
2. Unanimous consent
3. Annexation by Vote



“Annexation South”

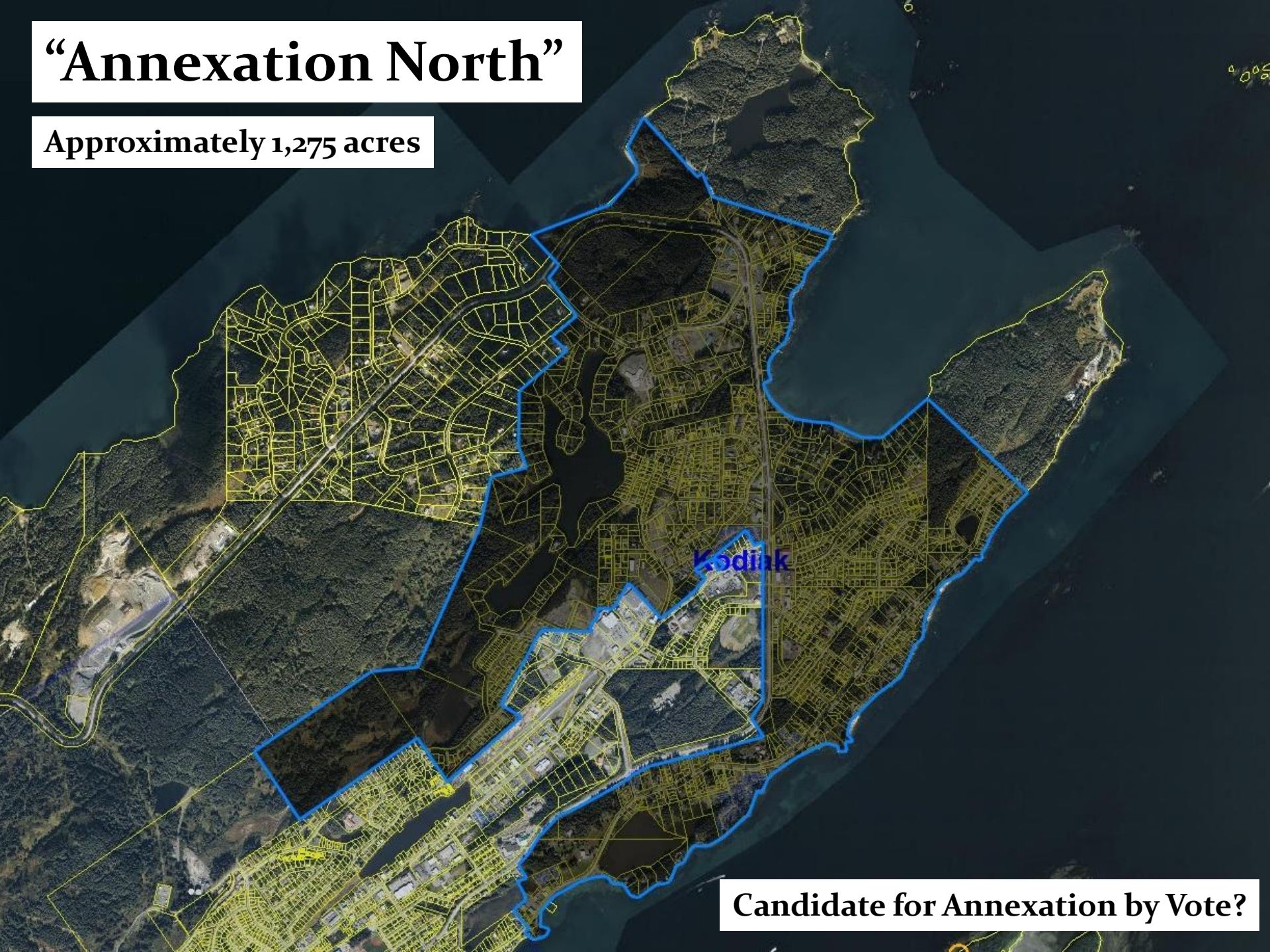
Approximately 1,317 acres, seven primary landowners



Candidate for Annexation by Unanimous Consent?

“Annexation North”

Approximately 1,275 acres



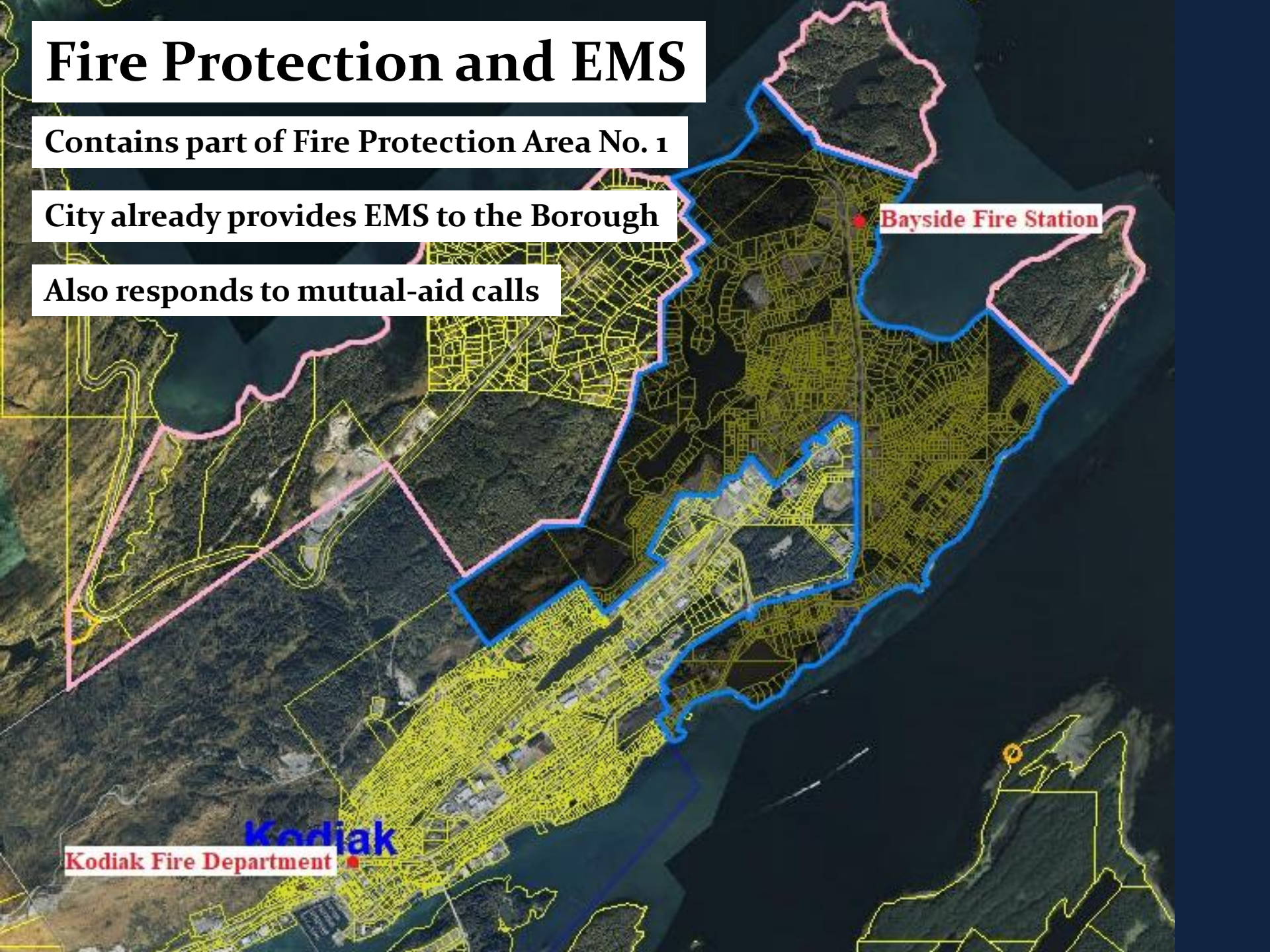
Candidate for Annexation by Vote?

Fire Protection and EMS

Contains part of Fire Protection Area No. 1

City already provides EMS to the Borough

Also responds to mutual-aid calls

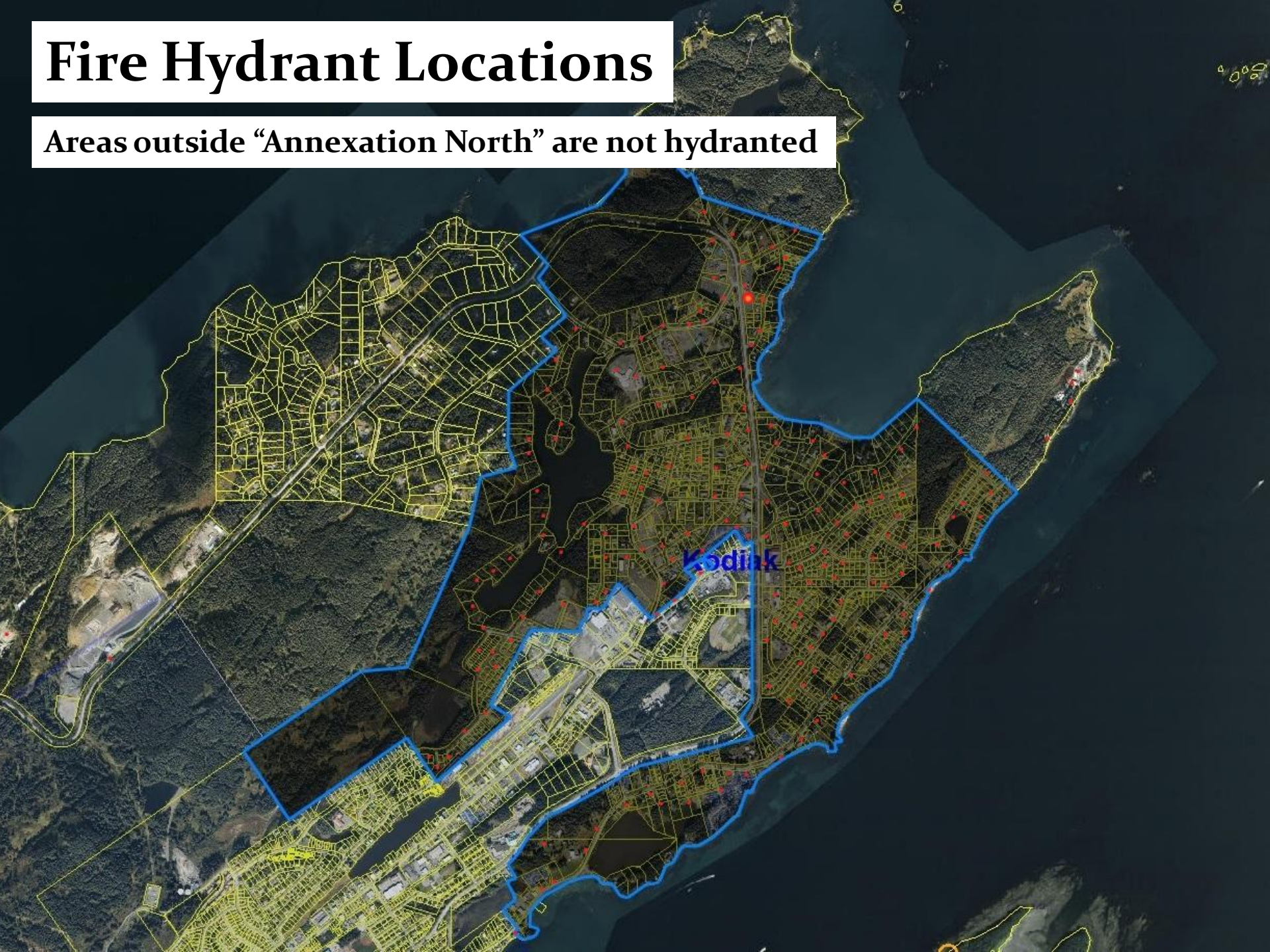


Bayside Fire Station

Kodiak
Kodiak Fire Department

Fire Hydrant Locations

Areas outside “Annexation North” are not hydranted



KPD Patrol Levels

Annexation may increase the City's population by 50%

May also decrease State Troopers

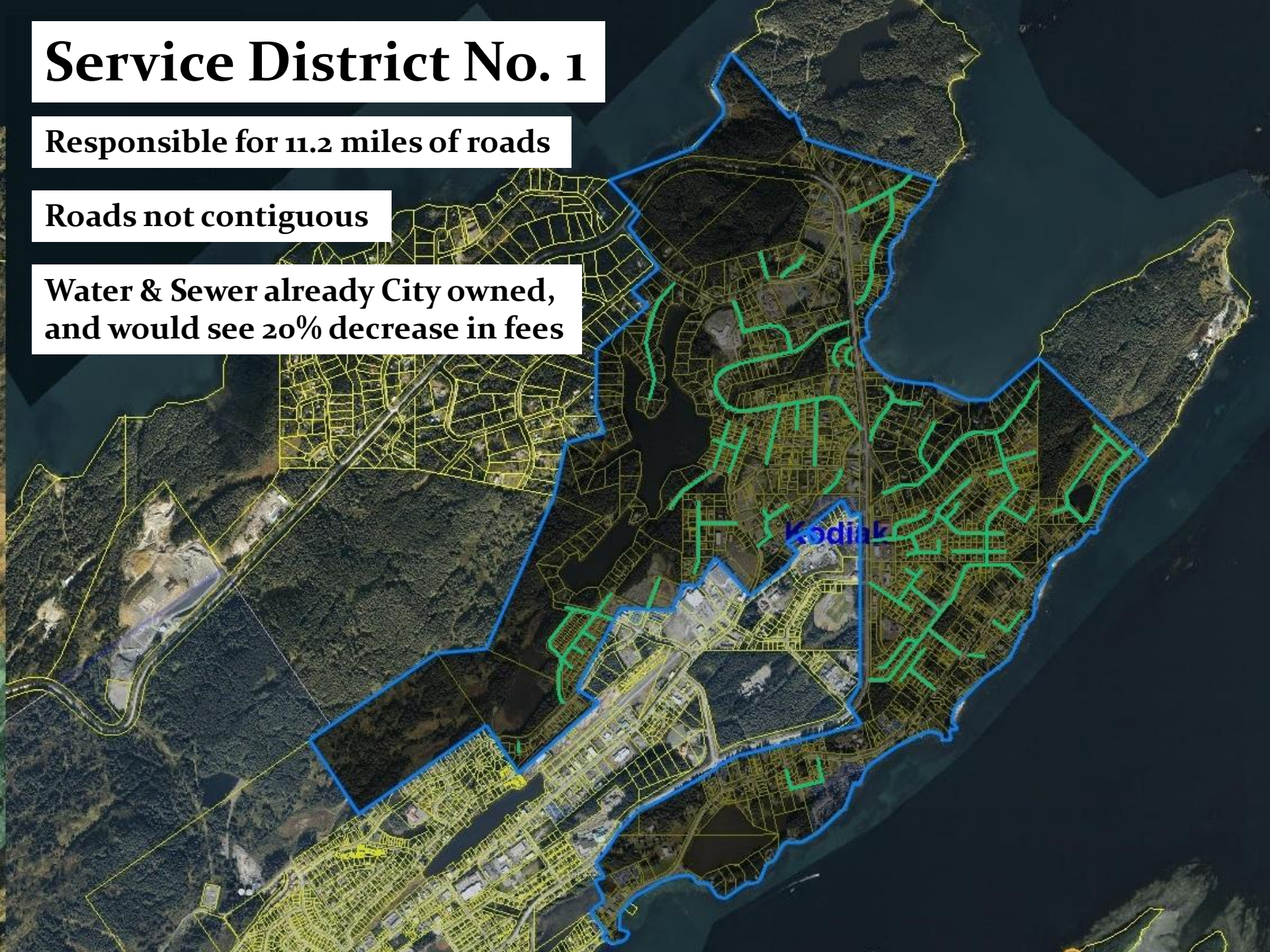


Service District No. 1

Responsible for 11.2 miles of roads

Roads not contiguous

Water & Sewer already City owned,
and would see 20% decrease in fees



Next Steps?

If the Council desires:

1. Determining population gain

2. EPA, DEC regs for w/s

3. Sales tax?

4. Communication

5. Benefits, and Costs

Enfranchisement

Increased Services

...does it pencil out?

