

CITY OF OLD HARBOR



COMMUNITY EMERGENCY RESPONSE PLAN

Annex D to the Kodiak Emergency Operations Plan

August 2000

CITY OF OLD HARBOR

COMMUNITY EMERGENCY RESPONSE PLAN

Annex D to the Kodiak Emergency Operations Plan

August 2000

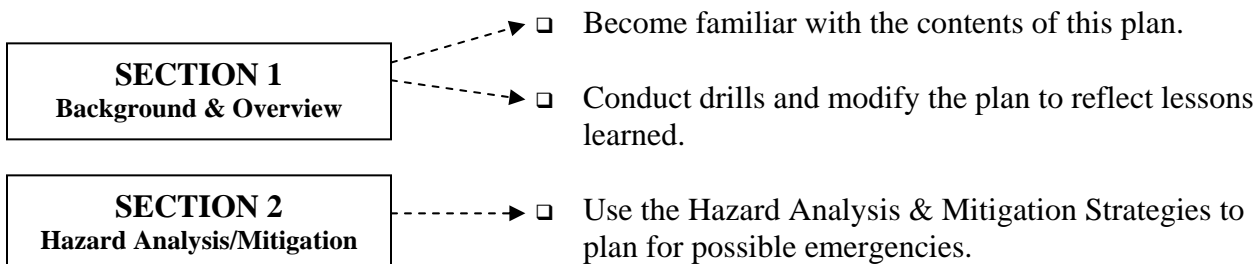
**Old Harbor City Council
P.O. Box 198 Old Harbor, AK 99643
(907) 286-2203**

**Old Harbor Tribal Council
Box 62, Old Harbor, AK 99643
(907) 286-2214**

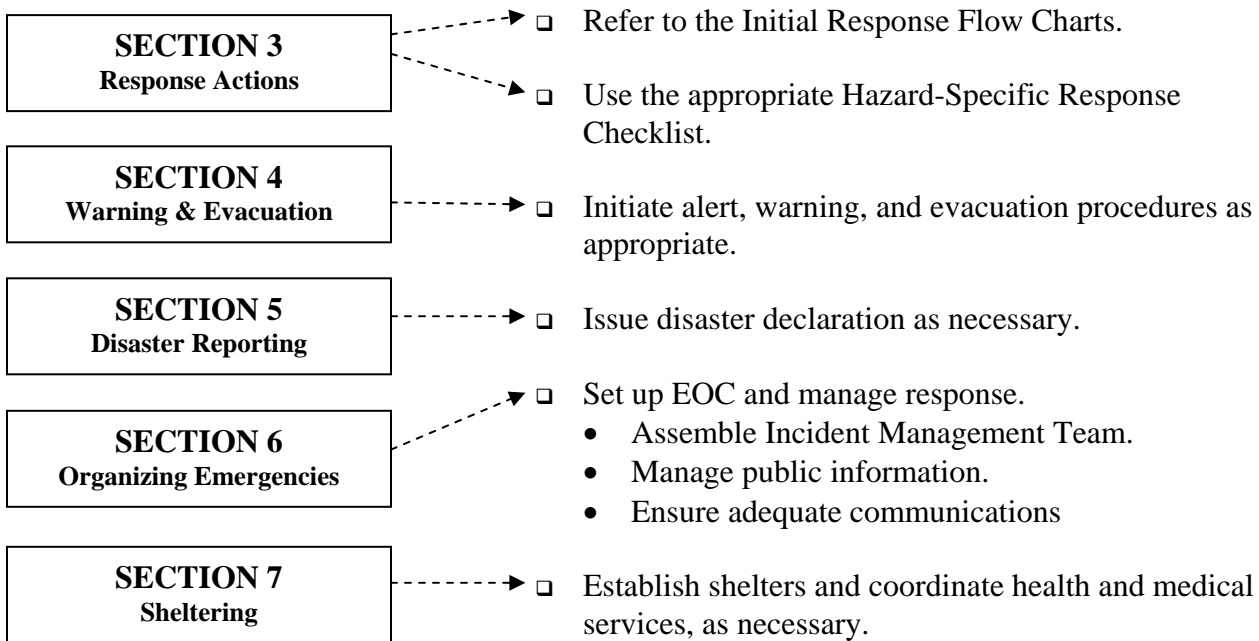
**Kodiak Emergency Services
Organization
710 Mill Bay Road
Kodiak, Alaska 99615
(907) 486-8640**

HOW TO USE THIS PLAN

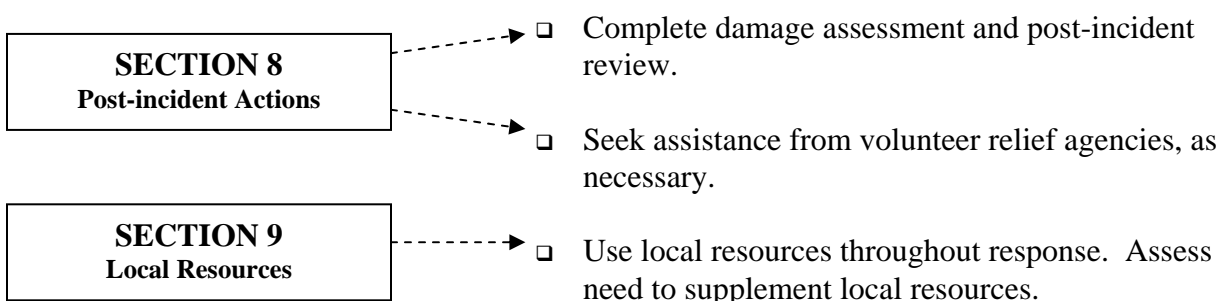
Before a disaster/emergency occurs:



During a disaster/emergency:



After a disaster/emergency has occurred:



Old Harbor Community Emergency Response Plan

PLAN ORGANIZATION

The Old Harbor Community Emergency Response Plan is an annex to the Kodiak Emergency Operations Plan. The Old Harbor Community Emergency Response Plan is divided into eight sections, as follows.

- 1. BACKGROUND AND OVERVIEW**
 - Background and procedural information
 - Emergency Management
 - Plan Management
 - Community Profile
- 2. HAZARD ANALYSIS AND MITIGATION STRATEGIES**
- 3. RESPONSE ACTIONS**
 - Initial Response Flow Charts
 - Hazard-specific Response Guides
- 4. WARNING AND EVACUATION**
 - Alert and Warning
 - Evacuation
- 5. DISASTER DECLARATION AND REPORTING**
- 6. ORGANIZING FOR EMERGENCIES**
 - Old Harbor Incident Management Team
 - Emergency Operations Center
 - Public Information and Communications
- 7. SHELTERING**
 - Shelter and Feeding
 - Health and Medical Services
- 8. POST-INCIDENT ACTIONS**
 - Damage Assessment
 - Post-incident Review
- 9. OLD HARBOR RESOURCES**
 - Emergency Services, Medical, and Law Enforcement Resources
- 10. TELEPHONE DIRECTORY**
 - Local/Regional Agency Telephone Directory

Table of Contents

How to Use this Plan	i
Plan Organization	ii
Table of Contents	iii
Letter of Promulgation	vii
Record of Changes	ix
Plan Distribution List	xi
SECTION 1 BACKGROUND AND OVERVIEW	
EMERGENCY MANAGEMENT POLICIES	1-1
Policy Statements	1-1
Purpose of this Plan	1-1
Direction and Control.....	1-2
Community and Individual Readiness.....	1-2
Organizing for Local Emergencies	1-3
Phases of Disaster Emergency Management.....	1-4
Levels of Emergency Response.....	1-5
PLAN MANAGEMENT AND UPDATES	1-7
Plan Review Cycle.....	1-7
Drills and Exercises	1-8
OLD HARBOR COMMUNITY PROFILE	1-9
Local Contact Information	1-9
Demographics, History, and Climate.....	1-9
Transportation and Economics.....	1-10
Utilities and Communications	1-11
Facilities and Equipment Resources.....	1-12
Reference Map: Region	1-13
Reference Map: Old Harbor	1-15
SECTION 2 HAZARD ANALYSIS AND MITIGATION STRATEGIES	
Introduction	2-1
Avalanche/Landslide.....	2-2
Coastal Erosion	2-3
Drought	2-4
Earthquake	2-5
Energy Shortages/Interruptions.....	2-7
Fire (Wildland/Structural).....	2-8
Hazardous Materials Releases and Oil Spills.....	2-9
Transportation Accidents	2-11
Tsunami.....	2-12
Old Harbor Tsunami Evacuation Map.....	2-14
Volcano	2-15
Weather Extremes	2-16

Old Harbor Community Emergency Response Plan

SECTION 3 RESPONSE ACTIONS

INITIATING AN EMERGENCY RESPONSE	3-1
Introduction.....	3-1
Initial Response Checklists	3-1
INITIAL RESPONSE FLOW CHART	3-3
TSUNAMI RESPONSE FLOW CHART.....	3-4
HAZARD-SPECIFIC RESPONSE CHECK LISTS	3-5
Avalanche/Landslide 3-7	
Coastal Erosion.....	3-9
Drought	3-11
Earthquake	3-13
Energy Shortage/Interruption	3-15
Fire (Wildland/Structural).....	3-17
Hazardous Material/Oil Spill	3-19
Transportation Accident	3-21
Tsunami 3-23	
Volcano 3-25	
Weather Extremes.....	3-27

SECTION 4 WARNING AND EVACUATION

OLD HARBOR SIREN ALERT & WARNING SYSTEM	4-1
Siren Alert System	4-1
Emergency Alert System	4-1
Mobile Public Address System.....	4-2
Door to Door Alert.....	4-2
Special Populations.....	4-2
TSUNAMI ALERT AND WARNING PROCEDURES.....	4-3
SAMPLE ALERT AND WARNING MESSAGES	4-5
OLD HARBOR EVACUATION PROCEDURES.....	4-7
Evacuation Considerations	4-7
Evacuation Guidelines	4-8
Other Evacuation Considerations	4-9
Methods of Evacuation	4-9
Medical Evacuation	4-11
Shelter in Place	4-12
SAMPLE EVACUATION ORDER	4-13

SECTION 5 DISASTER DECLARATION AND REPORTING

DISASTER ASSISTANCE	5-1
Introduction.....	5-1
Declaration of Local Disaster Emergency	5-1
Reporting	5-2
EMERGENCY RESPONSE AGENCIES AND RESOURCES	5-3
AND AGENCIES OUTSIDE THE COMMUNITY	

Table of Contents

SAMPLE LOCAL GOVERNMENT DISASTER DECLARATION.....	5-5
WITHOUT REQUEST FOR STATE OR BOROUGH ASSISTANCE	
SAMPLE LOCAL GOVERNMENT DISASTER.....	5-7
DECLARATION WITH REQUEST FOR BOROUGH ASSISTANCE	
SAMPLE LOCAL GOVERNMENT DISASTER.....	5-9
DECLARATION WITH REQUEST FOR STATE ASSISTANCE	
STATE OF ALASKA SITUATION REPORT	5-11
SECTION 6 ORGANIZING FOR EMERGENCIES	
OLD HARBOR INCIDENT MANAGEMENT TEAM	6-1
Incident Command System (ICS) Organization.....	6-2
and General Principals	
Command Levels	6-3
INCIDENT MANAGEMENT TEAM POSITION DESCRIPTIONS.....	6-4
Command Staff	6-4
General Staff	6-6
OLD HARBOR IMT QUALIFIED PERSONNEL ROSTER	6-9
EMERGENCY OPERATIONS CENTER (EOC) FACILITIES	6-11
Old Harbor EOC Locations.....	6-11
EOC Requirements.....	6-12
EOC Configuration	6-13
EOC Supplies Checklist.....	6-14
EOC OPERATIONS	6-16
Public Information Flow	6-16
Media Guidelines	6-17
EOC Communications.....	6-17
Basic Incident Communications Plan	6-18
Local Communications Equipment Resources.....	6-19
Regional Communications Resources.....	6-19
Old Harbor Radio Frequencies	6-20
SECTION 7 SHELTERING	
SHELTER OPERATIONS	7-1
Shelter Management and Integration	7-2
with Volunteer Relief Organizations	
Shelter Requirements	7-3
Services Provided at the Shelter.....	7-4
Shelter Reception and Registration	7-5
Shelter Planning Guidelines.....	7-6
OLD HARBOR SCHOOL SHELTER PROFILE	7-7
OLD HARBOR SCHOOL	7-8
OLD HARBOR SCHOOL FLOOR PLAN.....	7-9
SECTION 8 POST-INCIDENT ACTIONS	
CONCLUDING THE RESPONSE.....	8-1
DEMOBILIZATION	8-1
DAMAGE ASSESSMENT	8-2
Initial Damage Assessment	8-2
Disaster Recovery Assistance for Local Citizens.....	8-3
POST-INCIDENT EVALUATION.....	8-4

Old Harbor Community Emergency Response Plan

SECTION 9 OLD HARBOR RESOURCES

LOCAL AGENCIES AND RESOURCES	9-1
HEALTH AND EMERGENCY MEDICAL SERVICES	9-1
Old Harbor Clinic	9-1
Community Health Aide (CHA).....	9-2
Community Health Representative (CHR)	9-2
Village Response Team (VRT).....	9-3
LAW ENFORCEMENT AND EMERGENCY.....	9-4
RESPONSE RESOURCES	
Village Public Safety Officer (VPSO).....	9-4
Volunteer Fire Department	9-5
REGIONAL AGENCIES AND RESOURCES.....	9-5
Kodiak Area Native Association (KANA)	9-5
Kodiak Village Services Network (KVSN).....	9-6
Alaska State Troopers "C" Detachment, Kodiak Post	9-7
Kodiak Salmon Packers (cannery).....	9-7
SUMMARY OF COMMUNITY RESOURCES/CAPABILITIES	9-8
Medical	9-8
Communications	9-9
Equipment.....	9-9
PRIVATE/VOLUNTEER AGENCIES.....	9-10

SECTION 10 TELEPHONE DIRECTORY

OLD HARBOR AGENCIES & ORGANIZATIONS	10-1
KODIAK REGIONAL AGENCIES & ORGANIZATIONS	10-1
Kodiak Island Borough.....	10-1
City of Kodiak	10-2
Other Kodiak Communities	10-3
Regional Volunteer Groups and Miscellaneous	10-4
ALASKA STATE AGENCIES	10-4
FEDERAL AGENCIES.....	10-5
REGIONAL PRIVATE ORGANIZATIONS.....	10-6
Airplane Charters and Rentals	10-6
Media	10-7
Regional Native Organizations	10-7
Regional Fisheries Organizations and	10-8
Environmental Groups	

Old Harbor Community Emergency Response Plan Letter Of Promulgation

The Old Harbor Community Emergency Response Plan, an annex to the Kodiak Emergency Operations Plan, describes the system that will be used to manage the mitigation of, preparation for, response to, and recovery from natural and man-caused disaster emergencies. It is an all-hazard, all-risk plan based on the NIIMS Incident Command System for comprehensive management of disaster emergency relief forces and disaster emergency operations. The Old Harbor Community Emergency Response Plan (CERP) consists of ten sections, each considering a different element of emergency response.

In an emergency, Old Harbor will use a broad, all-hazard disaster emergency management system which encompasses all types of disaster emergencies and addresses mitigation, preparedness, response, and recovery activities. The incident management organization in the Old Harbor CERP is specifically designed to integrate with the Kodiak Incident Management Team (IMT) structure described in the Kodiak Emergency Operations Plan.

This document is intended to meet disaster emergency planning requirements of all federal, state, borough, and city agencies having jurisdiction over such matters. It is further intended that this document be used as a reference and training aid for municipal, village, industry, and other emergency response personnel to ensure efficient and effective response and management of disaster emergencies.

This Community Emergency Response Plan should be used whenever there is a disaster emergency that could significantly threaten human health, property or the environment. Upon declaration of a disaster emergency, the designated person responsible for disaster emergency management (City Mayor or designee) is authorized to commit the resources necessary to carry out the provisions of this plan.

This plan is considered a living document and should be continuously updated and revised to reflect lessons learned during drills and actual incidents. The Old Harbor Community Emergency Response Plan is hereby adopted by the Old Harbor community.

City of Old Harbor Mayor

Kodiak Emergency Services Director

Old Harbor Tribal Council President

**Kodiak Detachment Commander
Alaska State Troopers, "C" Detachment**

Kodiak Area Natives Association

**Alaska Division of Emergency Services
Emergency Response Coordinator**

Old Harbor Community Emergency Response Plan

(This page intentionally blank.)

Record of Changes

Instructions To Plan Holder

Use this form to document any changes to the Old Harbor Community Emergency Response Plan. Update the plan by removing outdated pages and replacing with updated information.

Record Of Changes

Revision Number	Section	Pages	Revised Date	Initial
_____	_____	_____	_____	_____
_____	_____	_____	_____	_____
_____	_____	_____	_____	_____
_____	_____	_____	_____	_____
_____	_____	_____	_____	_____
_____	_____	_____	_____	_____
_____	_____	_____	_____	_____
_____	_____	_____	_____	_____
_____	_____	_____	_____	_____
_____	_____	_____	_____	_____
_____	_____	_____	_____	_____
_____	_____	_____	_____	_____
_____	_____	_____	_____	_____
_____	_____	_____	_____	_____
_____	_____	_____	_____	_____

Old Harbor Community Emergency Response Plan

(This page intentionally blank.)

Plan Distribution List

Control Number	Plan Holder
1	EGD Environmental Consulting - Master Copy
2	City of Old Harbor Mayor and City Council
3	Kodiak Island Borough Community Development Director
4	Alaska State Troopers Kodiak Post Commander
5	KANA EMS Specialist
6	Alaska State Emergency Response Commission (SERC)
7	Old Harbor Village Public Safety Officer
8	City of Old Harbor Volunteer Fire Chief
9	Old Harbor Tsunami Shelter
10	Old Harbor School
11	Old Harbor Tribal Council
12	Kodiak Emergency Services Director (City of Kodiak Manager)
13	Kodiak Public Library
14	
15	

Old Harbor Community Emergency Response Plan

(This page intentionally blank.)

OLD HARBOR EMERGENCY MANAGEMENT POLICIES

Policy Statements

Old Harbor observes the following emergency management policies:

- To safeguard life and property by making maximum use of all available resources (public and private).
- To minimize the effects of environmental, technological, and civil disaster emergencies.
- To encourage all citizens to be self-sufficient for up to 72 hours should a disaster emergency occur.

Purpose of this Plan

This Community Emergency Response Plan serves the following purposes:

- To guide local response in any situation where standard operating procedures are not sufficient to handle an emergency incident.
- To provide policy guidance and operational directives to coordinate and support local response activities.
- To guide local responders in call-out and notification of outside agencies.
- To promote local preparedness and first response while awaiting outside aid.
- To serve as a community-specific annex to the Kodiak Emergency Operations Plan by:
 - Allowing for integration of local personnel into the Kodiak IMT organization.
 - Providing local information and guidance about the community to supplement regional response efforts.
 - To identify a Community Incident Management Team (IMT) for Old Harbor, consisting of representatives from the city government, tribal council, Village Public Safety Officer, and the KANA EMS Village Response Team.

Background and Overview

Direction and Control

- The City of Old Harbor Mayor or designee has the ultimate authority and responsibility for the direction and control of local resources during an emergency.
- A declaration of disaster emergency by the City of Old Harbor Mayor or designee is required to access state and federal disaster assistance, and may expedite procurement of local resources and funding as well.
- The City of Old Harbor Mayor or designee has the authority to request assistance from the Kodiak Emergency Services Director and/or from the Kodiak Island Borough and/or directly from the State of Alaska.
- The City of Old Harbor Mayor or designee serves as Incident Commander in all local emergencies, and as such directs the Old Harbor Incident Management Team (IMT).
- As the response escalates to involve additional local, state, and federal agencies, the Old Harbor IMT can be expanded and integrated with the Kodiak IMT or other response structures, as appropriate.

Community and Individual Readiness

- Individual and family preparedness is the first step in successful disaster mitigation and response.
- All community members must remain well informed about the risks of natural and technological disasters.
- All community members must remain well informed about local disaster response plans and policies, including evacuation routes, shelters, mass care facilities, and shelter-in-place procedures.
- When individuals and families cannot respond effectively, it is the responsibility of the local government to protect life and property from the effects of hazardous events.
- When the emergency exceeds the local government's capability to respond, assistance will be requested from the state government. The federal government will provide assistance to the state, when appropriate.

Basic responsibility for disaster emergency planning and response lies first with individuals and heads of households.

Organizing for Local Emergencies

This plan is concerned with all types of emergency situations that may develop. It also accounts for activities before, during and after emergency operations.

- This plan is based on the concept that emergency functions for groups and individuals involved in emergency management will generally parallel their normal day-to-day functions.
- It is important to maintain organizational continuity and to assign familiar tasks to personnel, however in large-scale disasters it may be necessary to draw upon peoples' basic capacities and use them in areas of greatest need.
- Day-to-day functions that do not contribute directly to the emergency operation may be suspended for the duration of any emergency.
- Local community emergency responders usually know the best ways to apply disaster emergency relief resources within their communities.
- State response organizations will coordinate their activities with the local and borough governments so that State aid is rendered in the most helpful manner.
- Federal assistance should also be supportive of State and local efforts, not a substitute for them.

Background and Overview

Phases Of Disaster Emergency Management

Disaster emergency management planning can be divided into four phases: mitigation, preparedness, response, and recovery. Although each phase has tasks assigned to it, the process is dynamic and interconnected. This plan addresses all four phases of disaster emergency management, with a focus on response.

1. Mitigation:

- Includes those actions taken to eliminate a hazard, or to reduce the potential for damage should a disaster emergency occur.
- Mitigation actions include building codes, special identifications and routing requirements for the movement of hazardous materials, land use, and zoning requirements.

2. Preparedness:

- Includes actions taken to plan, equip, and train citizens and government personnel to respond to local emergencies.
- Preparation may include developing Community Emergency Response Plans and exercises to test them, training in evacuation procedures, and purchase of equipment and supplies needed to respond to the disaster emergency.

3. Response:

- Includes actions taken to save lives and protect property during a disaster emergency.
- Response may include search and rescue, fire suppression, evacuation, emergency feeding and sheltering. It may also include behind-the-scenes activities such as activating disaster plans, and opening and staffing Emergency Operations Center.

4. Recovery:

- Includes those processes required to return the jurisdiction to normal following an emergency.
- Recovery could include reconstruction of roads and public facilities, securing financial aid for disaster victims, and review and critique of response activities.

Levels of Emergency Response

When a disaster emergency requires a coordinated response, the following tiered response flow occurs. The response begins with the first responders on-scene, and depending on the incident specifics, may eventually expand to include local, state, and federal government and/or private sector responders, managers, and resources.

First Responders

- The first responders (i.e. fire, VRT, EMS, VPSO) are dispatched to deal with the emergency. A local emergency responder, usually the person-in-charge from the responding organization, acts as Incident Commander and leads the response effort at the scene.
- The Incident Commander follows standard operating procedures and requests additional assistance as appropriate.

Local

- If the incident can be effectively managed by the initial Incident Commander and on-scene personnel, no further local or outside involvement may be required.
- For a more serious incident, it may be necessary to activate the local Incident Management Team (IMT) to establish the Emergency Operations Center (EOC), manage emergency operations, coordinate on-scene personnel, and gauge the need for assistance from outside the community.

State

- When a disaster response exceeds local capabilities, the City of Old Harbor Mayor or the Kodiak Emergency Services Director will request assistance from the Alaska Division of Emergency Services (ADES).
- The Director of ADES will activate state agencies and coordinate federal, military, and independent agency assistance as required.
- Upon declaration of a “State of Emergency,” the governor assumes command of all the state’s emergency services. The governor implements the State of Alaska Emergency Operations Plan and activates the State Emergency Coordination Center, appoints a State Coordinating Officer, contacts the FEMA Regional Director and requests a Presidential Disaster Declaration for federal assistance as needed.
- Local responders will continue to be integrated into the incident management structure to the maximum extent possible.

Background and Overview

Federal

- When federal agencies and resources are added to the local response, coordination between local governments and federal agencies is managed by ADES.
- The Federal Emergency Management Agency (FEMA) is typically the lead federal agency in disaster emergencies. The FEMA regional director will activate the Regional Operations Center and organize the Alaska Emergency Response Team and Federal Liaison Officer, and will alert the Region X Emergency Response Team and the Federal Coordinating Officer.
- After completion of a preliminary damage assessment, the director of FEMA will recommend to the President whether to declare an Emergency or Major Disaster. The President will declare an Emergency or Major Disaster and appoint the Federal Coordinating Officer, who serves as the President's representative to the disaster emergency and leads the federal response and recovery efforts from the field office.
- In a disaster not qualifying for a Presidential declaration, assistance may be available under the statutory authorities of individual federal agencies. The City of Old Harbor Mayor or Kodiak ESD may request assistance from the appropriate agencies through the Alaska Division of Emergency Services.

Private Sector

- In the case of an emergency that originates at a private facility or plant, the person-in-charge of the affected facility will implement the facility Emergency Response Plan, activates its Emergency Operations Center, declare a facility disaster, and communicate with the local community to request assistance.
- Depending upon the type of incident, the Old Harbor IMT and EOC may be activated to support the response at a private facility, and a Unified Command will be formed, consisting of a private sector facility representative and representatives of the local, state, and federal agencies with jurisdiction.
- For certain types of incidents, such as fires and hazardous materials releases, local agencies may maintain incident command to protect public health and safety. Likewise, if the private facility or organization responsible for the incident does not have the planning or personnel in place to support a response, the Community IMT and/or the Kodiak IMT and EOC may be selectively activated to support response operations.
- Local medical facilities are an important private sector resource to consider during an emergency response. Medical resources are limited in the community of Old Harbor and in Kodiak, so it is important to notify the hospital when an incident occurs that might result in human casualties.

PLAN MANAGEMENT AND UPDATES

Plan Review Cycle

The Old Harbor Community Emergency Response Plan will be reviewed and amended, if necessary:

- Within one month following each emergency exercise or drill during which the plan is used, to reflect lessons learned during the drill or emergency.
- As appropriate to reflect any changes in community or Borough resources, departments, form of government, agency structure or other such event which would impact emergency services in Old Harbor.
- At least once per year.

The City of Old Harbor is responsible to ensure that revisions are made and incorporated into all copies of the Plan.

All updates and revisions should be tracked on the **Record of Changes Form**, in the introductory pages of this annex.

Drills and Exercises

Drills, training, and exercises are vital to determine the effectiveness of this Community Emergency Response Plan. Training and exercise will be evaluated by participants and observers and specific elements of the Plan changed as indicated.

Background and Overview

subsistence lifestyle. Fishing provides income to the community. Residents of Kaguyak, a summer fish camp, also live in Old Harbor.

According to a 1990 U.S. Census, there were approximately 112 total housing units in the community, 25 of which were vacant. Old Harbor was estimated to support 42 local jobs. The official unemployment rate for Old Harbor at census time was estimated at 39.1%, with a median household income of \$16,875.

Transportation and Economy

Old Harbor has no overland access roads; visitors must travel by land or water. Several local commercial air carriers service Old Harbor, with daily mail flights scheduled and charter flights available as well. Air access to Old Harbor is always weather dependent. There is also regular commercial ferry service to Old Harbor through the Alaska Marine Highway system.

Old Harbor has a state-owned 2750 foot gravel airstrip at a 15 foot elevation, which is unattended. Runway conditions are not monitored, so visual inspection is recommended prior to use. There is no aviation fuel available. Float planes may also land in the seaplane base, weather dependent. There are harbor facilities available in Old Harbor at the cannery, with a docking capacity for 55 boats. The cargo dock/fuel pier can accommodate larger vessels. Local and Seattle-based cargo barge service comes into Old Harbor regularly.

The road system in Old Harbor is limited to gravel roads and paths. There are some vehicles (roughly 75-100) and also approximately 40-60 ATVs in the community. The community has its own fire truck.

The economy of Old Harbor relies primarily on fishing and tourism. Many of the residents are commercial fishermen, and tourism is an increasing part of the economy. 39 residents hold commercial fishing permits. Most depend to some extent on subsistence activities for food sources, such as salmon, halibut, crab, deer, seal, rabbit, and bear.

Utilities and Communications

Old Harbor has no local newspaper (the Kodiak paper is brought in by plane). Many residents have CB radios, and some have VHF marine radios, although these cannot reach Kodiak. There are telephones in most homes. Telephone service in Old Harbor is dependent upon electrical supply. Without electricity, the phones would cease working after one or two days of running on battery power.

Old Harbor receives its water supply from a dammed creek, using an infiltration gallery where the water is treated and stored in a tank, then distributed via pipes. A community septic tank treats piped sewage. All residences are connected to the public water and sewer system and have complete plumbing. Refuse collection services are not available,

although the City has requested funding for dumpsters and vehicles to do so. The landfill was recently relocated.

Electricity is provided by AVEC, with backup generation available. The community is interested in developing hydroelectricity.

Facilities and Equipment Resources

There is one school in Old Harbor with approximately 67 students. In the event of a major disaster (non-tsunami), the Old Harbor school would become an initial shelter. In the event of a tsunami, the clinic would be used as an initial shelter.

Old Harbor has a well-stocked clinic with auxiliary medical response support provided by the village response team. The clinic is staffed by a Community Health Representative and a Community Health Aide II, and is stocked with basic lifesaving equipment, trauma, and first aid equipment. However, a serious injury or major illness would require medivac to Kodiak or Anchorage.

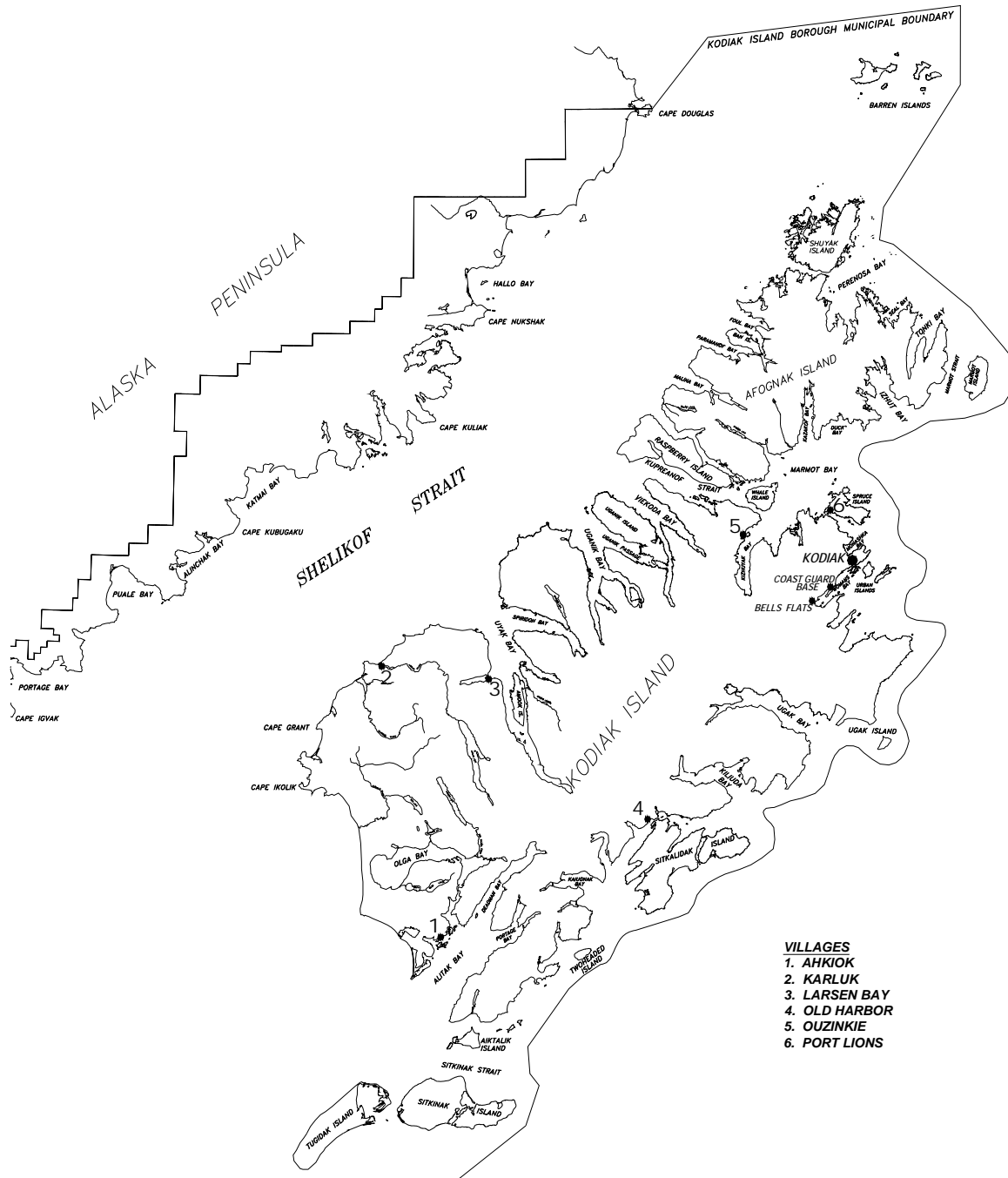
Old Harbor has two small grocery stores with variable hours of operation. There is one restaurant, open year round. Old Harbor also has one lodge open year-round, as well as several seasonal bed and breakfasts. Old Harbor has no general store and no major repair capabilities (automobile, marine repair, etc.) in the community.

Warehouse space, construction and offloading equipment, and some oil spill response equipment are available.

Background and Overview

(This page intentionally blank.)

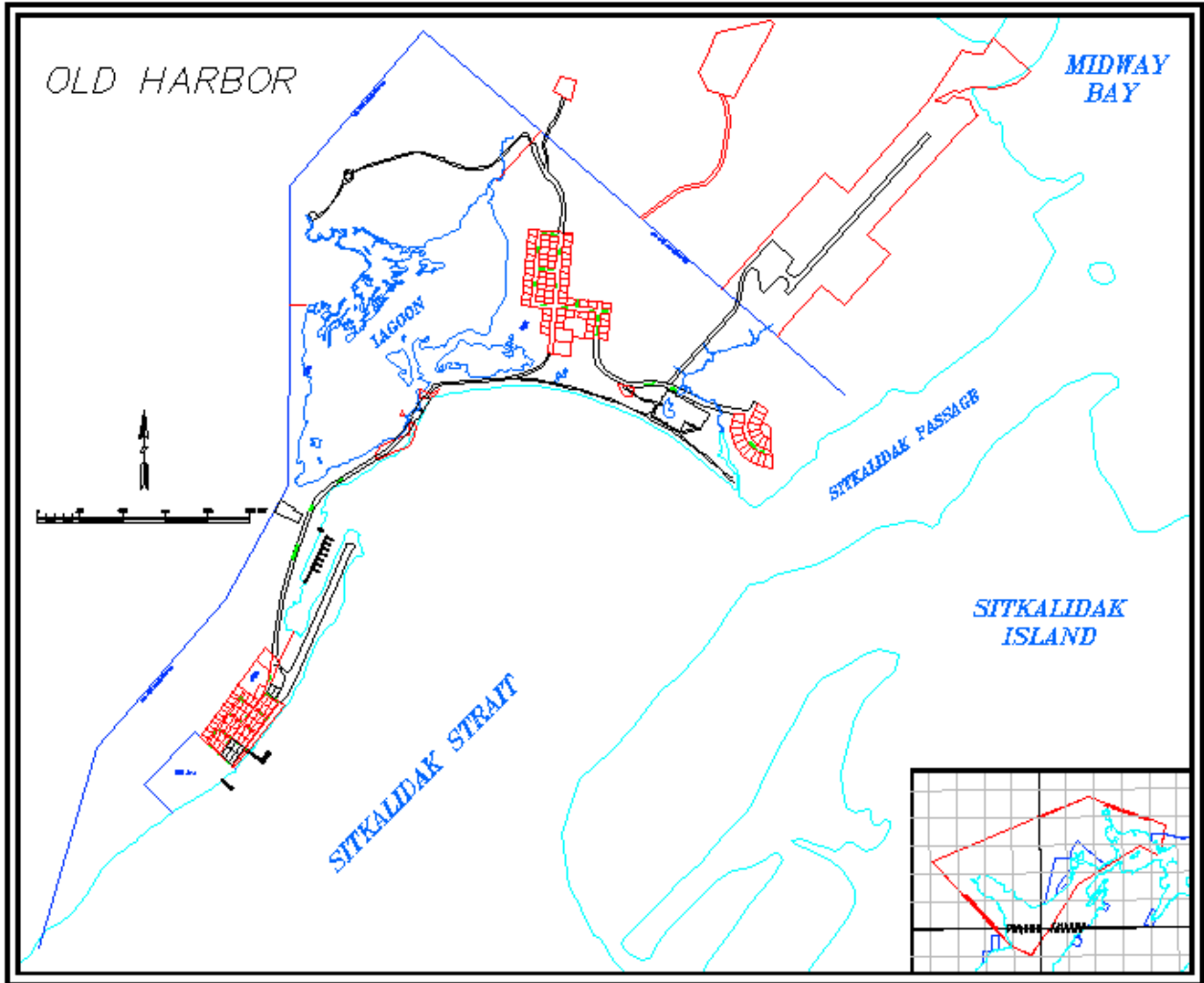
Reference Map: Region



Background and Overview

(This page intentionally blank.)

Reference Map: Old Harbor



Background and Overview

(This page intentionally blank.)

Introduction

This section analyzes the major hazards (both natural and technological) faced by the community of Old Harbor. Each hazard is considered individually as it affects or threatens to affect Old Harbor, and each hazard analysis is divided into a two-part discussion consisting of a *hazard analysis* that considers the hazard in general and the community-specific risk posed by each hazard; and a consideration of *mitigation strategies* that could be used both at a community and individual level to prepare for certain hazards.

This section also highlights possible mitigation strategies that may be used by the community to lessen the potential damage that could be caused by each type of hazard. The mitigation discussion considers both local government planning efforts and individual/family preparedness concerns.

The following hazards are discussed in this section, in alphabetical order:

- Avalanche/Landslide
- Coastal Erosion
- Drought
- Earthquake
- Energy Shortage or Interruption of power
- Fire
- Oil or hazardous materials spills (both within community and occurring in other places but spreading to effect community)
- Transportation Accident
- Tsunami
- Volcano
- Weather Extremes

For emergency response actions and checklists specific to each hazard, turn to the Emergency Operations Guide, Part B of this plan.

Hazard Analysis and Mitigation Strategies

Avalanche/Landslide

Avalanche Definition: A mass of sliding snow occurring in mountainous terrain where snow is deposited on slopes of 20 degrees or more.

Landslide Definition: A mass of sliding mud or rocks.

HAZARD ANALYSIS

Inclement weather, heavy rains and steep topography create landslides which can range from small local events to events involving tens of thousands of tons of rock and mud. Velocity of the movement can range from a slow creep to up to three hundred km. per hour. The most common hazard associated with landslides is the blockage of roadways. Landslides may also damage vehicles, powerlines, gaslines and other structures and can cause injury and death in certain circumstances.

Avalanches are created when large quantities of snow, ice, and debris accumulate in steep areas. Avalanches generally move at a high velocity and may cause structural damage, injuries, and death. Common hazards associated with avalanches include blocked roadways and damage to power, gas, and telephone lines. Populations at risk from landslides and avalanches are those who live, work or recreate in those areas with steep slopes, extreme snow accumulation, or unstable substrate as well as those traveling the road system through known landslide or avalanche paths and run-out zones.

There are no known avalanche areas in Old Harbor. Small landslides have occurred in the hill area adjacent to the city. These threaten to impact the road as well as several businesses and community buildings.

MITIGATION STRATEGIES

Mitigation of both landslide and avalanches depends on public awareness and individual preparation along with:

- Adequate landslide forecasting;
- Warning systems and control measures to reduce the loss of life and property;
- Zoning ordinances and other comprehensive regulation measures specifically for the reduction of landslide damage;
- Public sheltering capabilities; and
- Restoration of services.

It is important for the community to recognize the potential for landslide or avalanche activity and to take additional precautions in high risk areas and during times of heavy rain or snow.

Coastal Erosion

Definition: The gradual removal of sediments (including beach sand and topsoil) in coastal areas due to wave and tidal action.

HAZARD ANALYSIS

Wind, wave and tidal action can impact large portions of the shoreline, including beaches and small cliff areas. Erosion may cause damage to roadways, residences, and other structures, and it may also lead to a loss of vegetation. The effects of erosion on coastal areas are generally gradual, although dramatic coastal erosion may occur following a storm or flood event.

Erosion is occurring along the road at the head of the bay in Old Harbor, and many residents believe that the culvert currently in place may aggravate this situation. Erosion does not currently threaten any residential areas or businesses.

MITIGATION STRATEGIES

In general, erosion mitigation can be accomplished through:

- Public awareness;
- Zoning ordinances; and
- Other comprehensive regulation measures such as setback policies which limit development too close to the shoreline.

In extreme cases, shoreline fortification may be used to slow coastal erosion in some areas, however this process often creates additional long-term problems by interrupting natural sediment transport and aggravating erosion problems in adjacent areas.

Hazard Analysis and Mitigation Strategies

Drought

Definition: Prolonged period without rain.

HAZARD ANALYSIS

Although Old Harbor normally receives substantial precipitation during the course of the year, a prolonged dry spell and/or several years in a row with below-normal rainfall could result in a drought. In addition, the presence of drought conditions may lead to, or aggravate, other emergency conditions, such as wildfires and energy shortages.

Old Harbor's water supply is fed from deeper in the interior of the island, where thawing snow in the mountains provide a fairly reliable water source. The water is collected, treated, then piped to local residences. Water shortages are rare, however, water supply to many local homes may be impacted by extremely cold weather, when water pipes may freeze.

Old Harbor is in the process of switching to hydroelectric power. Once the power supply has changed, the most serious threat posed by a drought in Old Harbor would be the disruption of hydroelectric power.

When drought conditions do occur, the threat of wildland fires also exists. Old Harbor responds to burn restrictions implemented by the ADNR Division of Forestry (Kenai), and also may implement local burn restrictions during times of low rainfall. The responsibility to monitor rainfall conditions and implement burn restrictions lies with the City Mayor.

MITIGATION STRATEGIES

Planning and preparedness for drought is primarily the responsibility of the local and regional governments.

- Response to drought will require close coordination with local and state firefighting organizations to ensure that minimum water levels are maintained for fire suppression.
- Coordination of curtailment activities and public information concerning the drought should also be closely coordinated with other water users in Old Harbor.

Drought mitigation depends heavily on:

- Public education;
- Individual preparedness; and
- Careful monitoring of water supply sources by local governments, especially during times of low rainfall.

Earthquake

Definition: A sudden motion of the ground which may cause surface faulting, ground shaking and ground failure.

HAZARD ANALYSIS

Approximately 11 percent of the world's earthquakes occur in Alaska. Of the ten largest earthquakes in the world since 1904, three occurred in Alaska. The vast majority of the large earthquakes in Alaska occur along the Aleutian Islands, the Alaska Peninsula, and the Kenai Peninsula. This belt is known as the Alaska-Aleutian subduction zone. The earthquakes result from slipping along the contact zone of the Pacific and Alaska plates. These earthquakes typically cause very strong shaking which lasts several minutes; significant, permanent uplift or subsidence over very large areas; very large seismic sea waves or tsunamis; extremely high wave runup of a few to more than 90 feet locally; and many landslides, snow avalanches, and submarine slumps at distances out to 160 miles from the epicenter.

The general effects of these events include structural damage to bridges, buildings, port and harbor facilities, airport facilities, utilities, and communications systems. In addition, an earthquake of between 6.0 to 9.0 on the Richter scale may cause additional emergencies such as tsunamis, floods and landslides, fires, explosions, and hazardous materials incidents; disruption of vital services such as water and power, and disruption of emergency response facilities, resources and systems.

Kodiak Island and surrounding areas (Cook Inlet, the Gulf of Alaska, and the Eastern Aleutian Islands) experience frequent earthquakes with magnitudes of under 6.0 on the Richter scale. Since 1899, 82 earthquakes of Richter magnitude 6.0 or greater have been recorded in the Cook Inlet area, and 26 of these were actually triggered within the area.

The 1964 Alaska earthquake and resultant tsunami provide a relatively recent example of the very real threat posed by earthquake activity near the City of Old Harbor and in the Kodiak region. The amount of subsidence caused by the 1964 earthquake was estimated at 2-2.5 feet, causing flooding and inundation of low-lying coastal areas.

The severity and location of any future earthquakes will determine to what extent persons and property are at risk in Old Harbor. The severity is a product of both intensity and magnitude. Intensity is based on the observed effects of ground shaking on people, buildings, and natural features. This is measured with the Modified Mercalli Intensity Scale. Magnitude is related to the amount of seismic energy released at the hypocenter of the earthquake. This is measured with the Richter Magnitude Scale.

Hazard Analysis and Mitigation Strategies

A “worst case scenario” for Old Harbor would be an earthquake with high intensity and magnitude which also generated a tsunami and caused major damage to all communities in the Kodiak region, including Old Harbor.

MITIGATION STRATEGIES

Earthquake mitigation is difficult because these events are not well predicted. Increased awareness and community-wide education about what to do before, during, and after an earthquake are essential to mitigate this potential hazard.

The local population should be advised on a regular basis that they must EVACUATE to the tsunami shelter (Old Harbor CLINIC) in the case of a major earthquake. Lead time for a locally generated tsunami may be only a matter of minutes.

Energy Shortage/Interruption

Definition: The shortage or interruption of vehicle fuel, heating oil, or disruptions of electrical power.

HAZARD ANALYSIS

Energy shortages/interruptions in Old Harbor may involve vehicle fuel, heating oil, bottled gas or electrical power. The city's supply of fuel, heating oil, bottled gas, and production of electrical power may be affected by international, national or Alaska conditions, or as a result of major natural disasters or technological emergencies such as earthquakes or periods of unusually cold weather.

The moment at which a reduction in supply becomes an emergency is difficult to pinpoint. Conditions may be exacerbated by panic buying, hoarding, or the time of year in which the crisis occurs. People and property at risk will depend on the extent of shortages or outages.

Old Harbor has had problems with fuel shortages in the past. However, the city is in the process of replacing the city tank farm, and with the construction of this new tank farm, fuel shortages should become less of a problem. Once Old Harbor has switched to hydroelectric power generation, the likelihood of power outages caused by diesel shortages should be eliminated. There are several portable generators in the community that could be used as a backup power source in an emergency.

MITIGATION STRATEGIES

Mitigation of possible energy shortages/disruptions, particularly in connection with another disaster such as an earthquake or tsunami, depends on public education and awareness. Old Harbor is already prepared to function without normal electrical power sources, as several backup generators exist in the community. If the energy shortage is limited to Old Harbor, it may be possible to seek relief from the Kodiak Island Borough, depending on the type of shortage. However, if the crisis occurs region-wide, relief may require considerably more time. It is important that the community maintain the capability to survive without electricity, fuel, or telephone service for up to several weeks.

Hazard Analysis and Mitigation Strategies

Fire

Wildfire - Any instance of uncontrolled burning in grasslands, brush or woodlands.

Structural - The uncontrolled burning in residential, commercial, industrial or other properties in developed areas.

HAZARD ANALYSIS

Old Harbor has the potential to experience both large structural and urban/wildland interface fires. Large wildland fires also have the potential to affect the Old Harbor community. Fires may arise as isolated incidents, or be caused by other emergencies such as earthquakes or oil/hazardous materials releases. In addition, they may be complicated by the presence of hazardous materials or extreme weather conditions. Although most of the forest and brush areas in the Old Harbor region are relatively small when compared to other areas in Alaska, wildland fires have occurred in Old Harbor the past and have threatened populated areas.

Fires pose a substantial health risk to local community members, especially those with respiratory problems.

In the case of a hazardous materials release during a fire, it is very important to ensure that all residents SHELTER IN PLACE until it is safe to leave their homes.

MITIGATION STRATEGIES

Wildfires can be mitigated through:

- Monitoring of drought conditions and rainfall, and
- Implementation of burn restrictions during times of low rain.

Structural fires may be prevented or controlled by ensuring that all residential, commercial, and public buildings are equipped with functioning fire detectors. Fire damage may also be mitigated by ensuring that all fire response equipment is functioning and that adequate, trained personnel are available.

Regular fire drills should be performed in schools and other areas with special populations, to ensure that evacuation procedures are clearly understood.

Oil Spills And Hazardous Materials Releases

Stationary - The uncontrolled release of hazardous materials from a fixed site such as hazardous materials fabrication, processing or storage sites, or hazardous waste treatment, storage or disposal facilities.

Transportation - The uncontrolled release of hazardous materials during transport such as highways, rail lines, pipelines and waterways.

The Kodiak Subarea Oil Spill Contingency Plan is the guiding document for oil spill response in the Kodiak region, including Old Harbor. The Kodiak Emergency Operations Plan shall be used in combination with the Subarea oil spill plan for hazmat incidents in the area.

HAZARD ANALYSIS

“Hazardous materials” refers generally to extremely hazardous substances, petroleum, natural gas, synthetic gas, acutely toxic chemicals and other toxic materials. For the purposes of this risk analysis (based on the State of Alaska model Community Disaster Response Plan), hazardous materials and oil spill incidents are considered together as a single risk group. Hazardous material releases and oil spill addressed in this analysis include those from both fixed facilities (manufacturing, processing, storage, and disposal) and transportation accidents (roadway, waterway, and air).

Hazardous materials (hazmat) and petroleum products are transported through Old Harbor in limited quantities and primarily via vessel traffic. Most classes of hazmat (liquids, gas, explosives, flammables, petroleum products) occasionally occur on these routes, although the largest quantity of hazmat in the community is petroleum (gas, diesel, and home heating fuel). Petroleum products are generally transported to Old Harbor by tank vessel and then transferred using fixed piping.

The only fixed site in Old Harbor where hazardous materials (other than oil) are stored or produced is the small city-owned water treatment plant, which uses chlorine powder. Most households have propane gas tanks for cooking.

As the harbor is still under construction in Old Harbor, most vessels (including those potentially transporting hazardous substances) dock and unload at the cannery. Vessel traffic in Shelikof Strait, Cook Inlet, Prince William Sound and the Gulf of Alaska also poses a spill risk to Old Harbor, as a large oil spill from these vessels could impact the Old Harbor shoreline.

Hazard Analysis and Mitigation Strategies

Freight vessels such as log ships often carry significant quantities of bunker fuel and other petroleum products through local waters. Containerized shipping vessels transport cargo which may include smaller quantities of toxic substances and moderate amounts of fuel oil. Air transport is not a common means of transporting hazmat into or out of Old Harbor, but small quantities of hazardous substances may occasionally be transported to remote locations by commercial or military aircraft that overfly Old Harbor.

The municipal fuel farm in Old Harbor currently has secondary containment and poses a significant risk of a spill directly to water. When the new tank farm is constructed, it will have full secondary containment. Old Harbor has experienced minor diesel spills from fishing vessels, and the community was impacted by the 1989 EXXON VALDEZ oil spill.

The Kodiak Emergency Operations Plan lists several reference documents regarding hazardous chemical storage and oil/hazmat spill planning in the Kodiak region. The community of Old Harbor has access to a limited amount of oil spill response equipment stored and maintained by the city, and a municipally-owned package of oil spill response equipment will soon be sited in Old Harbor for city use in oil spill response.

MITIGATION STRATEGIES

Populations at a particular risk to the effects of a hazardous material release include clinic patients, the elderly, those with respiratory problems, and the very young (school children, daycare facilities). It is essential that these at-risk populations receive immediate warning and direction should a hazardous materials release occur. Mitigation of hazardous materials risk relies on community education and prompt notification of qualified responders in the event of a release.

If a hazardous chemical release were to occur in Old Harbor, the city siren system could be used to warn local residents and direct them to either evacuate or shelter in place, as appropriate.

The human health risks associated with oil spills are less acute, but it is important that all oil spill response workers receive appropriate training and wear the requisite Personal Protective Equipment (PPE).

Transportation Accident

Definition: An accident involving passenger air, highway, rail and marine travel resulting in death or injury.

HAZARD ANALYSIS

The three major types of transportation accidents that Old Harbor faces are air, vehicle, and marine. Transportation accidents that occur along the road system (or in off-road vehicles), air space, and in navigable waters would not normally constitute a major emergency unless the accident was complicated by hazardous materials, mass casualties, or fatalities.

Old Harbor has a municipal airstrip with daily scheduled flight service as well as air taxi and occasionally Coast Guard air traffic, including both fixed wing aircraft and helicopters. Float planes also land in the vicinity of Old Harbor.

Vessel traffic in the Old Harbor area can be moderate, especially during the summer months during the height of fishing seasons. Larger vessels (barges) deliver fuel to the cannery and the city several times a year.

Old Harbor has approximately 10 miles of unpaved roads, none of which are state maintained. Vehicle accidents occur on occasion, often occurring off-roads or involving 4-wheel ATVs. Snowmobiles are not common in the community.

MITIGATION STRATEGIES

Most transportation accidents are localized and can be handled using local resources. Accidents on a larger scale or that involve hazmat and/or mass casualties will require additional resources. Most likely, if a major accident were to occur, the VPSO would call for a medivac for severely injured patients. The assistance of the Alaska State Troopers, Coast Guard, Kodiak Fire Department, and other outside agencies may be necessary to supplement the response.

Transportation accidents may have negative impacts on a community's mental health, particularly if local residents are involved in the event. It is important that the VPSO, Village Response Team, Community Health Representative, or other community leader take action to ensure that impacted community members receive the proper critical incident stress debriefing and grief counseling, as necessary.

Hazard Analysis and Mitigation Strategies

Tsunami

Definition: A series of traveling ocean waves of great length and long period usually generated by submarine geophysical displacement. May or may not be preceded by an earthquake.

HAZARD ANALYSIS

Tsunamis are a series of traveling ocean waves of great length and long period, generated by disturbances associated with earthquakes in oceanic and coastal regions. In Old Harbor, the most serious threat is from local tsunamis - those generated in Alaska Pacific waters. These waves have reached 100 feet and more in height in parts of Alaska. Because they are generated immediately offshore, they may strike the coast with far less warning than tsunamis which are generated in the western Pacific.

Submarine landslides, which may induce local tsunamis, can and have occurred without an earthquake. These waves could impact any or all shoreline areas in the region, depending on the size and direction of movement of the tsunami. Any tsunami greater than one meter in height may cause a variety of incidents such as industrial/technological emergencies (e.g. fires, explosions, and hazardous materials incidents); disruption of vital services such as water, sewer, power, gas and transportation; and damage to or disruption of port and harbor facilities, public works facilities and rolling stock, and the waste water treatment facility.

Currently, evacuation areas in Old Harbor are identified as all areas below the 100 foot elevation above sea level. This includes most of the community, including the school, therefore IN OLD HARBOR, THE CLINIC IS THE DESIGNATED TSUNAMI SHELTER.

It is important to remember that the 100 foot tsunami elevation level was selected to provide a reasonable margin of safety and is not actually linked to tsunami inundation levels. Old Harbor could potentially be impacted by a tsunami that inundates above the 100 foot elevation point. While the 1964 earthquake and tsunami provide a valuable reminder of the devastation tsunamis can cause, it is dangerous to presume that all future tsunamis in the Kodiak region will parallel the 1964 event. The next event could occur with far less warning and have far more severe impacts.

The West Coast/Alaska Tsunami Warning Center (WC/ATWC) in Palmer, Alaska issues tsunami warnings to Kodiak and other areas in Alaska, British Columbia, Washington, Oregon, and California. The City of Old Harbor is in turn notified through Kodiak, by the Alaska State Troopers. The Palmer ATWC tracks seismic activity and potential tsunamis in the Pacific basin.

When a large earthquake occurs, geophysicists at the ATWC determine its epicenter and magnitude, and if these data meet certain known criteria for the possible generation of a tsunami, the ATWC will issue a **TSUNAMI WARNING** for a limited area near the

Old Harbor Community Emergency Response Plan

epicenter. A tsunami warning message includes predicted tsunami arrival times at selected coastal areas and requires that those areas prepare for the possibility of immediate flooding from the tsunami.

A **TSUNAMI WATCH** is issued to areas adjacent to the warning area alerting them to the possibility of a tsunami threat. Upon issuing the watch and warning threats, the ATWC geophysicists will confirm whether or not a tsunami has been generated by examining additional data, and based on this information they will issue regular updates to the affected areas.

In the event of a tsunami watch or warning in Old Harbor, local notification procedures would be implemented. The City/VPSO would notify all city council, VRT, Fire Chief, and other essential personnel of a tsunami watch. If the watch were to escalate to a warning, the entire community would be alerted using the siren system.

MITIGATION STRATEGIES

Tsunami hazards are best mitigated by extensive preplanning using:

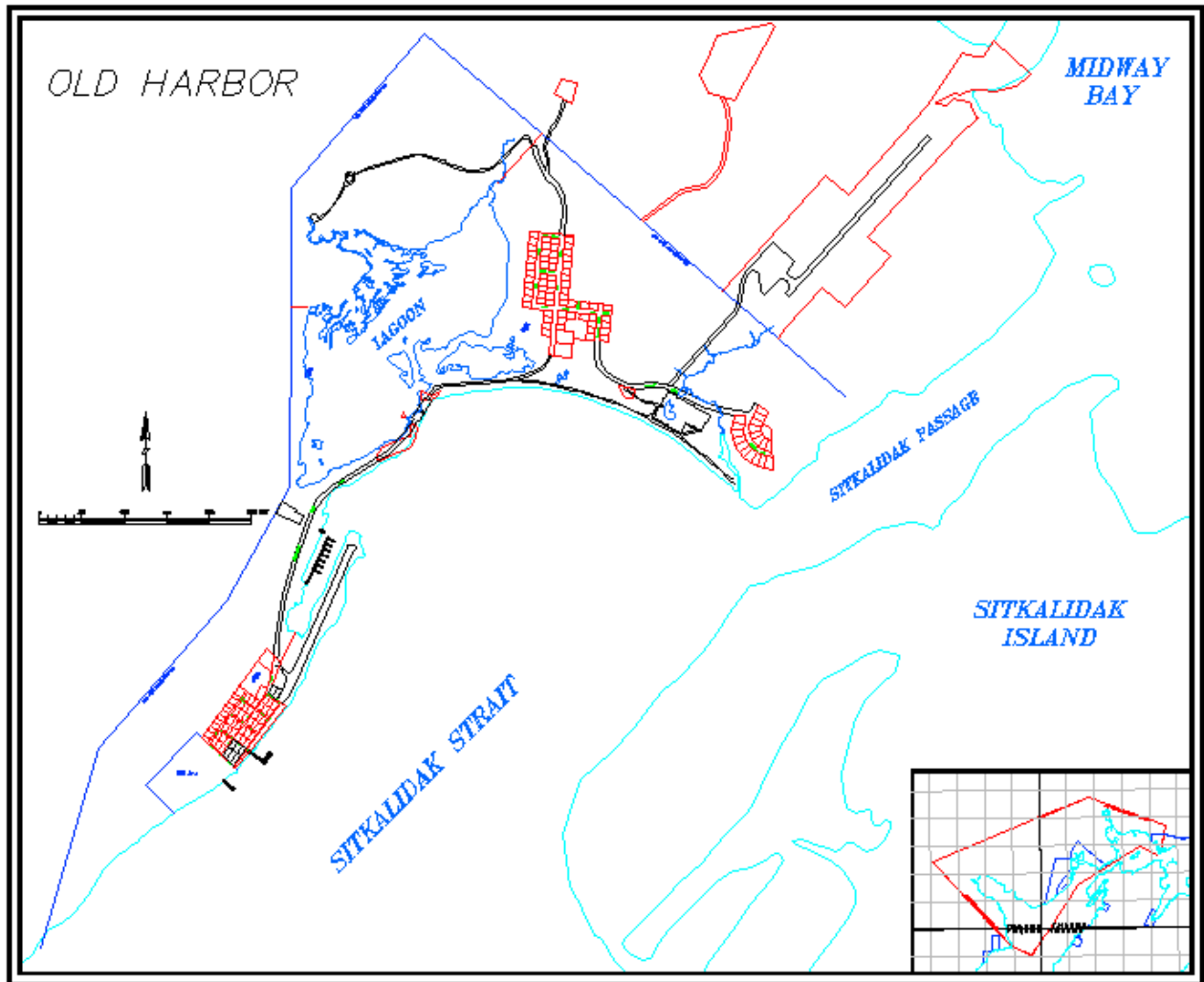
- Warning systems,
- Evacuation routes,
- Evacuation procedures, and
- Public education and awareness of these systems and routes.

Public service announcements explaining the tsunami warning signals and evacuation procedures will be played on local radio stations to educate local community members.

Local residents should be advised that in the event they feel a strong earthquake, they should immediately head for high ground regardless of whether the alarm has been sounded. Localized tsunamis (generated nearby) may hit land in a matter of minutes.

Hazard Analysis and Mitigation Strategies

Old Harbor Tsunami Evacuation Map



**In case of tsunami warning, head immediately to HIGH GROUND.
The Old Harbor Clinic is the designated tsunami shelter.
DO NOT evacuate to the School.**

Volcano

Definition: An eruption from the earth's interior producing lava flows or violent explosions issuing rock, gases and debris.

HAZARD ANALYSIS

Old Harbor is located adjacent to the famed "Pacific Rim of Fire," which begins at the Kenai Peninsula and runs along the Alaska Peninsula and the Aleutian Islands chain. Several active volcanoes are located along the Kenai and Alaska Peninsulas and Katmai coast that can impact the region. These volcanoes are mildly explosive, and have been active for some time, as indicated by numerous buried ash layers in surrounding soils.

The effects associated with volcanism include severe blast effects, turbulent clouds of ash and gases, lightning discharge, volcanic mudflows, pyroclastic flows, corrosive rain, flash floods, outburst floods, earthquakes, and tsunamis. Some of the results of these activities have been ash fallout in various communities, disruption of air traffic, road transportation and maritime activities. Vulnerability is dependent on the type of activity and current weather, especially wind patterns.

In 1912, the Kodiak region was blanketed in volcanic ash from the Katmai/Novarupta eruption on the Katmai Coast. That volcano blew an estimated six cubic miles (more than 33,000 million tons) into the air from vents in the Valley of Ten Thousand Smokes.

Because there are few populated areas within range of potential pyroclastic flows, the hazards Old Harbor faces from volcanic eruption are primarily from secondary results, such as ash clouds and gasses, corrosive rain, and seismic activity. Volcanic activity may cause localized tsunamis which could impact the region. Ash clouds may cause breathing problems for individual with respiratory disorders or weakness.

MITIGATION STRATEGIES

Mitigation of volcano risks depends on the community's ability to cope with potential long term effects and continual activity from the volcanoes. The ability to function and carry out services in airborne ash environments is a way to mitigate these effects as well as keeping the public involved during an event.

Special care should be taken to protect special populations, including young children, the elderly, and those with respiratory problems in the event of a volcanic eruption and ash cloud formation.

Hazard Analysis and Mitigation Strategies

Weather Extremes

Definition: Severe weather includes ice storms, blizzards, extreme cold, drought and high winds.

HAZARD ANALYSIS

There are no regular occurrences of severe weather such as typhoons or tornadoes in Old Harbor, however weather extremes such as high winds, large hail or heavy rainfall do threaten the area. Winds in excess of 50 miles/hour occur occasionally, and wind gusts may reach speeds of 90 miles/hour or more. Freezing rain, occasional heavy snowfall, and high winds are the dominant winter weather hazards that affect the area. Periods of extreme cold occur on a less frequent basis.

The effect of extreme weather would most likely be a disruption of vital services such as water, sewer, power, gas and transportation; damage to and disruption of emergency response facilities, resources and systems. Populations at risk depends on the extent of the scope of weather system. A “worst case scenario” would affect the entire community to some degree. During especially cold winters, Old Harbor has had freeze out problems with the water supply.

MITIGATION STRATEGIES

Mitigation depends primarily on individual preparedness, which may be facilitated through public education and shelter planning. It is important that the community have sufficient planning in place to provide backup power generation, water, and telephone service in the event that weather extremes do occur. Heating oil should be available with enough surplus to account for unforeseen shortages. The city should attempt to keep pipes from freezing in extremely cold weather.

INITIATING AN EMERGENCY RESPONSE

Introduction

This section of the Operations Guide should serve as a **starting point** for organizing a disaster response. This section uses simplified action guides (checklists) to help guide local response activities and to identify the types of circumstances and scale of disasters where outside assistance may be necessary.

- While this Community Emergency Response Plan has been designed to promote the highest possible level of self-sufficiency for disaster response within Old Harbor, there will always be some circumstances where borough, state, or federal resources will be necessary to support the response.
- There will also be certain types of disasters where the scale is such that multiple communities are affected and a coordinated, regional response will be necessary.

It is always better to be overly cautious and call for assistance as early on as possible. It will always be possible to scale down the response later, however if you wait to long to make notifications and/or requests to assistance, response time may not occur quickly enough to benefit the community.

Initial Response Checklists

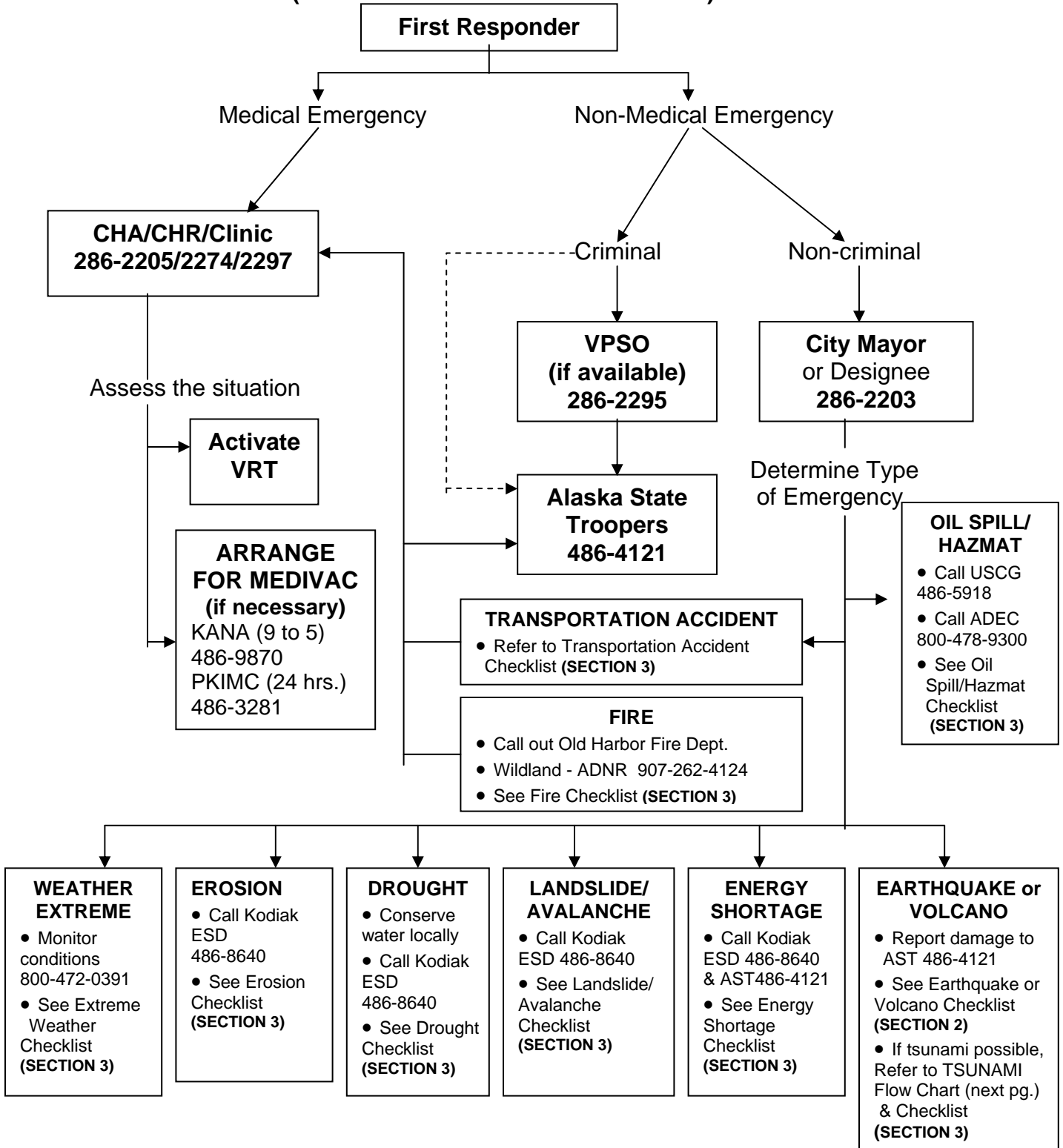
- The initial response checklists that follow outline immediate actions to take in the case of a local emergency.
- One checklist is general and may be used for all emergencies, except tsunamis.
- The tsunami initial response checklists focuses specifically on the warning and evacuation procedures that are unique to tsunami watch/warning situations.
- Each initial response checklist refers the user to other sections of this plan for further information/direction.

Response Actions

(This page intentionally blank.)

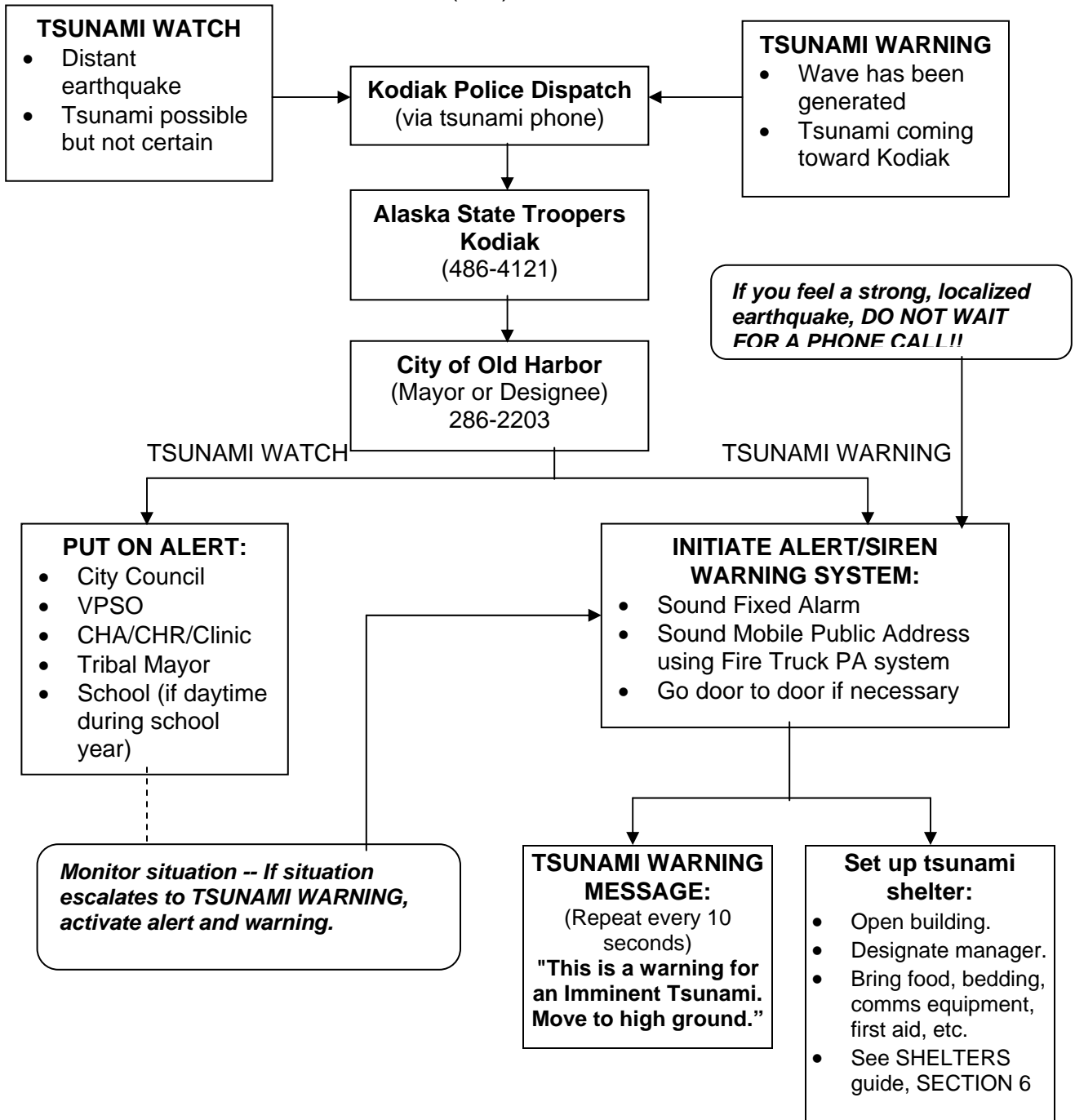
INITIAL RESPONSE FLOW CHART

(All Disasters EXCLUDING Tsunamis)



TSUNAMI RESPONSE FLOW CHART

ALASKA TSUNAMI WARNING CENTER
(907) 745-4214



HAZARD-SPECIFIC RESPONSE CHECKLISTS

The hazard-specific Response Checklists that follow offer a means to address the following:

- special and unique response procedures,
- notifications,
- protective actions,
- emergency public information, and
- other response needs generated by a particular hazard.

The checklists for each hazard focus on the special planning needs and regulatory issues generated by the hazard and identify appropriate outside agencies to contact for assistance in each case. The Response Checklists also reference other plan sections that may provide additional direction or background information to support the action item in the checklists.

These checklists are only guides, and all actions may not be appropriate in every situation. All responders and emergency personnel should use their own good judgement and common sense when carrying out the actions in this plan.

Response Actions

(This page intentionally blank.)

Response Checklist: AVALANCHE/LANDSLIDE

SITUATION	NOTIFICATIONS and CONTACTS (907-)	ACTIONS
<p>Warning Phase: Threat of an Avalanche or Landslide Exists</p>	<ul style="list-style-type: none"> <input type="checkbox"/> Village Response Team (via VPSO or CHR) <input type="checkbox"/> Alaska State Troopers 486-4121 <input type="checkbox"/> National Weather Service (for rain/snow forecasts) 800-472-0391 <input type="checkbox"/> Dept. of Transportation & Public Facilities (if roadways or airstrip are threatened) 487-4952 	<ul style="list-style-type: none"> <input type="checkbox"/> Identify areas at risk. <input type="checkbox"/> Identify safe areas suitable for sheltering evacuees. <input type="checkbox"/> Ensure evacuation routes are passable. <input type="checkbox"/> Estimate number of evacuees and arrange for shelter and feeding. <input type="checkbox"/> Arrange for public alert and warning. <input type="checkbox"/> Inventory heavy equipment for use in response & recovery. <input type="checkbox"/> Preposition emergency equipment, fuel, and medical supplies in safe area for use after slide/avalanche. <input type="checkbox"/> Arrange for safe delivery of incoming response personnel and supplies.
<p>Response Phase: Landslide or Avalanche is occurring</p>	<ul style="list-style-type: none"> <input type="checkbox"/> KANA Medical (9 to 5) if injury/death 486-9870 or 800-478-5721 <input type="checkbox"/> PKIMC - Hospital (24-hour) if injury/death 486-3281 <input type="checkbox"/> KIBSD (sheltering) 486-9222/9223 <input type="checkbox"/> ADES (disaster relief) 800-478-2337 <input type="checkbox"/> FEMA (disaster relief) 800-395-6042 <input type="checkbox"/> Red Cross 486-4040 <input type="checkbox"/> Salvation Army 486-8740 	<ul style="list-style-type: none"> <input type="checkbox"/> Review Warning checklist. <input type="checkbox"/> Establish EOC, if necessary. <input type="checkbox"/> Establish a watch/ observation system. <input type="checkbox"/> Continue to disseminate public information. <input type="checkbox"/> Limit travel/recreation in affected areas. <input type="checkbox"/> Establish shelters. Coordinate with KIBSD, Red Cross, Salvation Army. <input type="checkbox"/> Secure evacuated areas. <input type="checkbox"/> Establish safe location for emergency medical care. <input type="checkbox"/> Arrange for medical evacuations (through KANA/PKIMC) as necessary. <input type="checkbox"/> Estimate extent of damage.
<p>Recovery Phase: Landslide or Avalanche has occurred</p>	<ul style="list-style-type: none"> <input type="checkbox"/> Ensure that all organizations listed under WARNING and RESPONSE phases have been notified, as appropriate. 	<ul style="list-style-type: none"> <input type="checkbox"/> Review Warning & Response checklists. <input type="checkbox"/> Coordinate recovery activities with borough, state, and federal agencies. <input type="checkbox"/> Identify safety hazards and undertake corrective action. <input type="checkbox"/> Arrange for snow and debris clearance. <input type="checkbox"/> Restore damaged utilities and transportation systems (air, road, port) <input type="checkbox"/> Arrange emergency housing as needed. <input type="checkbox"/> Work on monetary damage estimates for disaster declaration.

Response Actions

(This page intentionally blank.)

Response Checklist: COASTAL EROSION

SITUATION	NOTIFICATIONS and CONTACTS (907-)	ACTIONS
<p>Warning Phase: Threat of Coastal Erosion Exists</p>	<ul style="list-style-type: none"> ❑ Kodiak Emergency Services Director 486-8640 ❑ National Weather Service (for weather forecasts) 800-472 - 0391 ❑ Dept. of Transportation & Public Facilities (if roadways or airstrip are threatened) 487-4952 ❑ Kodiak Island Borough Community Development Department (mitigation planning) 486-9360 	<ul style="list-style-type: none"> ❑ Identify areas at risk. ❑ Evaluate need for evacuation. ❑ Identify safe areas suitable for relocating evacuees. ❑ Determine whether roadways or transportation facilities are at risk. ❑ Estimate number of evacuees and arrange for relocation. ❑ Arrange for public alert and warning if necessary. ❑ Inventory heavy equipment for use in response & recovery. ❑ Remove emergency equipment, fuel, and medical supplies from threatened areas. ❑ Keep records of actions taken & resources used.
<p>Response Phase: Coastal Erosion is occurring</p>	<ul style="list-style-type: none"> ❑ KIBSD (sheltering) 486-9222/9223 ❑ Alaska State Troopers (relocation assistance) 486-4121 ❑ KANA (relocation assistance) 486-9870 or 800-478-5721 ❑ ADES (disaster relief) 800-478-2337 ❑ FEMA (disaster relief) 800-395-6042 ❑ Notify all other organizations listed under WARNING PHASE (above) as appropriate. 	<ul style="list-style-type: none"> ❑ Review Warning checklist. ❑ Establish EOC if necessary. ❑ Establish a watch/ observation system for erosion progression. ❑ Continue to disseminate public information. ❑ Limit travel/recreation in affected areas. ❑ Facilitate relocation of displaced resident. ❑ Establish shelters, if necessary. Coordinate with KIBSD, Red Cross, Salvation Army. ❑ Secure evacuated areas. ❑ Estimate extent of damage.

Response Actions

Coastal Erosion Response Checklist (cont.)

SITUATION	NOTIFICATIONS and CONTACTS (907-)	ACTIONS
Recovery Phase: Coastal Erosion has occurred	<input type="checkbox"/> Ensure that all organizations listed under WARNING and RESPONSE phases have been notified, as appropriate.	<input type="checkbox"/> Review Warning & Response checklists. <input type="checkbox"/> Coordinate recovery activities with borough, state, and federal relief agencies. <input type="checkbox"/> Reevaluate zoning ordinances and setback policies. <input type="checkbox"/> Identify safety hazards and undertake corrective action. <input type="checkbox"/> Arrange for debris clearance. <input type="checkbox"/> Work to restore damaged utilities and transportation systems (airstrips, roadways, and port facilities), if any. <input type="checkbox"/> Arrange for emergency housing as necessary. <input type="checkbox"/> Work on monetary damage estimates for disaster declaration.

Response Checklist: DROUGHT

SITUATION	NOTIFICATIONS and CONTACTS (907-)	ACTIONS
Warning Phase: Threat of a Drought Exists	<ul style="list-style-type: none"> ❑ Kodiak Emergency Services Director 486-8640 ❑ National Weather Service (for rain forecasts) 800-472-0391 ❑ KANA Medical if human health risks. 486-9870 or 800-478-5721 	<ul style="list-style-type: none"> ❑ Monitor low rainfall situations closely. ❑ Review local water use and develop curtailment plan. ❑ Establish and maintain contact with other affected areas. ❑ Arrange for public announcements via radio, television, newspaper. ❑ Identify facilities & industries at risk. ❑ Assess readiness of firefighting equipment. ❑ Research alternate potable water sources. ❑ Initiate help of volunteer and relief organizations.
Response Phase: Drought is occurring	<ul style="list-style-type: none"> ❑ Kodiak Area Fire & Rescue (if fire risk) 486-8040 ❑ ADNR Forestry (if fire risk) 262-4124 ❑ ADES (disaster relief) 800-478-2337 ❑ FEMA (disaster relief) 800-395-6042 ❑ American Red Cross 486-4040 ❑ Salvation Army 486-8740 	<ul style="list-style-type: none"> ❑ Review Warning checklist. ❑ Activate IMT & establish EOC. ❑ Monitor drought conditions. ❑ Continue to disseminate public information. ❑ Estimate water reserves. ❑ Develop conservation plan and coordinate with other jurisdictions. ❑ Monitor pumps to prevent damage. ❑ Monitor fire risk & advise Fire Departments. ❑ Request potable water assistance (KANA, Kodiak ESD).
Recovery Phase: Drought has occurred	<ul style="list-style-type: none"> ❑ Ensure that all organizations listed under WARNING and RESPONSE phases have been notified, as appropriate. 	<ul style="list-style-type: none"> ❑ Review Warning & Response checklists. ❑ Perform post-drought cleanup and utilities restoration. ❑ Coordinate recovery activities with borough, state, and federal relief agencies. ❑ Perform damage assessments. ❑ Coordinate disaster aid centers for individual/ family aid applications. ❑ Work on monetary damage estimates for disaster declaration.

Response Actions

(This page intentionally blank.)

Response Checklist: EARTHQUAKE

WARNING:

A strong earthquake whose epicenter is located a short distance away can generate a “local tsunami” in nearby waters, and the tsunami could reach coastal areas before a warning is issued. Historically, such waves have been the highest, reaching heights of 100 feet or more and up to one mile inland. All coastal areas in Kodiak are considered to have a “local tsunami” hazard.

See the Hazard Response Checklist for Tsunamis, also in this Section.

SITUATION	NOTIFICATIONS and CONTACTS (907-)	ACTIONS
<p>Response Phase: Earthquake is occurring</p>	<ul style="list-style-type: none"> ❑ Alaska Tsunami Warning Center (to find out about tsunami generation) 745-4214 ❑ Alaska State Troopers 486-4121 (for verification) ❑ Village Response Team (via VPSO or CHA) ❑ KANA Medical (9 to 5) if injuries/deaths 486-9870 or 800-478-5721 ❑ PKIMC - Hospital (24-hour) if injuries/deaths 486-3281 ❑ KIBSD (for assistance with sheltering) 486-9222/9223 ❑ ADES (disaster relief) 800-478-2337 ❑ FEMA (disaster relief) 800-395-6042 ❑ American Red Cross 486-4040 ❑ Salvation Army 486-8740 	<ul style="list-style-type: none"> ❑ Warn citizens of the dangers of weakened or collapsing buildings. ❑ Issue evacuation orders as appropriate. ❑ Activate IMT & establish EOC. ❑ Survey existing communications & develop communications plan. ❑ Notify medical/hospitals of injuries/deaths. ❑ Control fires and hazmat releases. ❑ Maintain public order and crowd control. ❑ Continue to disseminate public information. ❑ Establish shelters. Coordinate with KIBSD, Red Cross, Salvation Army. ❑ Secure evacuated areas. ❑ Establish safe location for emergency medical care. ❑ Arrange for medical evacuations (through KANA/PKIMC) as necessary. ❑ Estimate extent of damage.

Response Actions

Earthquake Response Checklist (cont.)

SITUATION	NOTIFICATIONS and CONTACTS (907-)	ACTIONS
Recovery Phase: Earthquake has occurred	<input type="checkbox"/> Ensure that all organizations listed under WARNING and RESPONSE phases have been notified, as appropriate.	<input type="checkbox"/> Review Warning & Response checklists. <input type="checkbox"/> Coordinate recovery activities with borough, state, and federal relief agencies. <input type="checkbox"/> Identify safety hazards and undertake corrective action. <input type="checkbox"/> Arrange for debris clearance. <input type="checkbox"/> Coordinate disaster aid centers for individual/ family aid applications. <input type="checkbox"/> Work to restore damaged utilities and transportation systems (airstrips, roadways, and port facilities). <input type="checkbox"/> Arrange for emergency housing as necessary. <input type="checkbox"/> Work on monetary damage estimates for disaster declaration.

Response Checklist: ENERGY SHORTAGE/INTERRUPTION

SITUATION	NOTIFICATIONS and CONTACTS (907-)	ACTIONS
Warning Phase: Threat of an Energy Shortage or Interruption Exists	<ul style="list-style-type: none"> <input type="checkbox"/> Alaska State Troopers 486-4121 <input type="checkbox"/> Kodiak Emergency Services Director 486-8640 	<ul style="list-style-type: none"> <input type="checkbox"/> Identify areas at risk. <input type="checkbox"/> Estimate possible consequences. <input type="checkbox"/> Coordinate with other borough, state, and federal agencies. <input type="checkbox"/> Alert public utilities. <input type="checkbox"/> Estimate nature & scope of assistance required.
Response Phase: Energy Shortage or Interruption is occurring	<ul style="list-style-type: none"> <input type="checkbox"/> ADES (disaster relief) 800-478-2337 <input type="checkbox"/> FEMA (disaster relief) 800-395-6042 <input type="checkbox"/> Salvation Army 486-8740 <input type="checkbox"/> American Red Cross 486-4040 <input type="checkbox"/> Notify all other organizations listed under WARNING PHASE (above) as appropriate. 	<ul style="list-style-type: none"> <input type="checkbox"/> Review Warning checklist. <input type="checkbox"/> Determine the extent of damage/interruption. <input type="checkbox"/> Establish EOC, as necessary. <input type="checkbox"/> Disseminate public information. <input type="checkbox"/> Use backup power as necessary. <input type="checkbox"/> Monitor public health & safety. <input type="checkbox"/> Estimate extent of damage.
Recovery Phase: Energy Shortage or Interruption has occurred	<ul style="list-style-type: none"> <input type="checkbox"/> Ensure that all organizations listed under WARNING and RESPONSE phases have been notified, as appropriate. 	<ul style="list-style-type: none"> <input type="checkbox"/> Review Warning & Response checklists. <input type="checkbox"/> Coordinate recovery & activities with borough, state, and federal relief agencies. <input type="checkbox"/> Make damage assessment. <input type="checkbox"/> Work to restore damaged utilities and transportation systems (airstrips, roadways, and port facilities). <input type="checkbox"/> Coordinate disaster aid centers. <input type="checkbox"/> Work on monetary damage estimates for disaster declaration.

Response Actions

(This page intentionally blank.)

Response Checklist: FIRE

SITUATION	NOTIFICATIONS and CONTACTS (907-)	ACTIONS
<p>Warning Phase: Threat of a Fire Exists (See also Drought checklists)</p>	<ul style="list-style-type: none"> <input type="checkbox"/> Old Harbor Fire (VPSO) <input type="checkbox"/> Alaska State Troopers 486-4121 <input type="checkbox"/> Kodiak Area Fire & Rescue 486-8040 <input type="checkbox"/> ADNDR Division of Forestry 262-4124 <input type="checkbox"/> National Weather Service (for rain forecasts) 800-472-0391 <input type="checkbox"/> KIBSD (for assistance with sheltering) 486-9222/9223 	<ul style="list-style-type: none"> <input type="checkbox"/> Identify areas at risk. <input type="checkbox"/> Determine fire readiness of vehicles & equipment. <input type="checkbox"/> Determine water levels for fire fighting. <input type="checkbox"/> Check auxiliary generators and other power, lighting, and communications, equipment. <input type="checkbox"/> Restrict outdoor burning. <input type="checkbox"/> Establish contact with fire agencies. <input type="checkbox"/> Survey existing communications. <input type="checkbox"/> Consider activation of EOC <input type="checkbox"/> Provide public information & direction.
<p>Response Phase: Fire is occurring</p>	<ul style="list-style-type: none"> <input type="checkbox"/> Ensure all WARNING PHASE notifications made. <input type="checkbox"/> Village Response Team (if EMS/Medical/Crisis support needed) via VPSO <input type="checkbox"/> KANA Medical (9 to 5) if injuries/deaths 486-9870 or 800-478-5721 <input type="checkbox"/> PKIMC - Hospital (24-hour) if injuries/deaths 486-3281 <input type="checkbox"/> ADES (disaster relief) 800-478-2337 <input type="checkbox"/> FEMA (disaster relief) 800-395-6042 <input type="checkbox"/> American Red Cross 486-4040 <input type="checkbox"/> Salvation Army 486-8740 	<ul style="list-style-type: none"> <input type="checkbox"/> Review Warning checklist. <input type="checkbox"/> Assess situation and identify affected areas. <input type="checkbox"/> Continue to disseminate public information. <input type="checkbox"/> Issue evacuation orders, as necessary <input type="checkbox"/> Activate IMT. <input type="checkbox"/> Establish EOC. <input type="checkbox"/> Establish shelters. Coordinate with KIBSD, Red Cross, Salvation Army. <input type="checkbox"/> Secure evacuated areas. <input type="checkbox"/> Establish facility/safe location for emergency medical care. <input type="checkbox"/> Arrange for medical evacuations (through KANA/PKIMC) as necessary. <input type="checkbox"/> Estimate extent of damage. <input type="checkbox"/> Contact social service and relief agencies, such as the Red Cross, as necessary.

Response Actions

Fire Response Checklist (cont.)

SITUATION	NOTIFICATIONS and CONTACTS (907-)	ACTIONS
Recovery Phase: Fire has occurred	<input type="checkbox"/> Ensure that all organizations listed under WARNING and RESPONSE phases have been notified, as appropriate.	<input type="checkbox"/> Review Warning & Response checklists. <input type="checkbox"/> Coordinate recovery activities with borough, state, and federal relief agencies. <input type="checkbox"/> Identify safety hazards and undertake corrective action. <input type="checkbox"/> Arrange for emergency housing, as necessary. <input type="checkbox"/> Work to restore damaged utilities and transportation systems (airstrips, roadways, and port facilities). <input type="checkbox"/> Work on monetary damage estimates for disaster declaration.

Response Checklist: OIL SPILLS AND HAZARDOUS MATERIALS RELEASES

SITUATION	NOTIFICATIONS and CONTACTS (907-)	ACTIONS
<p>Response Phase: Oil Spill or Hazardous materials release is occurring</p>	<ul style="list-style-type: none"> <input type="checkbox"/> NATIONAL RESPONSE CENTER (24-HR) 800-424-8802 <input type="checkbox"/> ADEC 800-478-9300 <input type="checkbox"/> USCG MSD Kodiak 486-5918 <input type="checkbox"/> Old Harbor Fire (VPSO) <input type="checkbox"/> Kodiak Emergency Services Director 486-8640 <input type="checkbox"/> Kodiak Area Fire & Rescue 486-8040 <input type="checkbox"/> Call 800 number listed on shipping papers or labels. <input type="checkbox"/> VRT (if human health risks) <input type="checkbox"/> KANA Medical (9 to 5) if injuries/deaths 486-9870 or 800-478-5721 <input type="checkbox"/> PKIMC - Hospital (24-hour) if injuries/deaths 486-3281 	<ul style="list-style-type: none"> <input type="checkbox"/> Secure the area where release has occurred. <input type="checkbox"/> Identify hazards if possible. Look for information on labels, shipping papers, etc. <input type="checkbox"/> Assess the situation to determine type of release, approximate size, weather factors, etc. <input type="checkbox"/> In case of an oil spill, refer to Kodiak Subarea Oil Spill Contingency Plan for response strategies and additional notification information. <input type="checkbox"/> Disseminate public information about evacuation or shelter-in-place. <input type="checkbox"/> Initiate evacuation, if necessary. <input type="checkbox"/> Establish facility/safe location for emergency medical care. <input type="checkbox"/> Arrange for medical evacuations (through KANA/PKIMC) as necessary. <input type="checkbox"/> Activate the IMT and set up EOC if necessary. <input type="checkbox"/> Estimate extent of damage.
<p>Recovery Phase: Oil Spill or Hazardous materials release has occurred</p>	<ul style="list-style-type: none"> <input type="checkbox"/> Ensure that all organizations listed under RESPONSE phase have been notified, as appropriate. 	<ul style="list-style-type: none"> <input type="checkbox"/> Review Response checklist. <input type="checkbox"/> Ensure that all hazardous materials have been disposed of or neutralized. <input type="checkbox"/> Identify safety hazards and undertake corrective action. <input type="checkbox"/> Work to restore damaged utilities and transportation systems (airstrips, roadways, and port facilities). <input type="checkbox"/> Work on monetary damage estimates for disaster declaration.

Response Actions

(This page intentionally blank.)

**Response Checklist:
TRANSPORTATION ACCIDENT
(Marine, Vehicle, Aircraft)**

SITUATION	NOTIFICATIONS and CONTACTS (907-)	ACTIONS
<p>Response Phase: Accident is occurring</p>	<ul style="list-style-type: none"> ❑ Alaska State Troopers 486-4121 ❑ Village Response Team (via VPSO or CHA) ❑ KANA Medical and Social Services (9 to 5) 486-9870 or 800-478-5721 ❑ PKIMC - Hospital (24-hour) if injuries/deaths 486-3281 ❑ ADES (disaster relief) 800-478-2337 ❑ FEMA (disaster relief) 800-395-6042 ❑ NTSB, OSHA, FAA, State Medical Examiner (via AST) ❑ Dept. of Transportation & Public Facilities (if roadways or airstrip are threatened) 487-4952 ❑ KIBSD (for assistance with sheltering) 486-9222/9223 ❑ American Red Cross 486-4040 ❑ Salvation Army 486-8740 	<ul style="list-style-type: none"> ❑ If hazardous materials or oil are released/spilled, refer to the previous checklists. ❑ If injuries, involved, notify VRT and call for medevac, as appropriate. ❑ Contact AST and request that they contact NTSB, OSHA, FAA & State Medical Examiner, as appropriate. ❑ Secure the area. Control crowds. ❑ Control fires and hazmat releases as necessary. ❑ Activate IMT and establish EOC. ❑ Establish facility/safe location for emergency medical care. ❑ Arrange for medical evacuations (through KANA/PKIMC) as necessary. ❑ Request AST, Red Cross, VRT assistance with temporary morgues and burials. ❑ Activate VRT and contact KANA for social support and counseling of families of victims. ❑ Set up emergency shelters, as necessary. ❑ Disseminate public information. ❑ Estimate extent of damage.

Response Actions

Transportation Accident Response Checklist (cont.)

SITUATION	NOTIFICATIONS and CONTACTS (907-)	ACTIONS
Recovery Phase: Accident has occurred	<input type="checkbox"/> Ensure that all organizations listed under RESPONSE phase have been notified, as appropriate.	<input type="checkbox"/> Review Response checklist. <input type="checkbox"/> Maintain scene security. <input type="checkbox"/> Identify safety hazards and undertake corrective action. <input type="checkbox"/> Arrange for debris clearance. <input type="checkbox"/> Work to restore damaged utilities and transportation systems (airstrips, roadways, and port facilities). <input type="checkbox"/> Arrange for emergency housing as necessary. <input type="checkbox"/> Work on monetary damage estimates for disaster declaration.

Response Checklist: TSUNAMI

IF WARNING TIME IS EXTREMELY LIMITED, activate the tsunami notification system locally. Tell people when to evacuate and where to go. Then evacuate the low-lying areas and worry about other things later. Use the evacuees to help move out the others as they go along.

SITUATION	NOTIFICATIONS and CONTACTS (907-)	ACTIONS
<p>Warning Phase: Tsunami watch or warning has been issued.</p>	<ul style="list-style-type: none"> ❑ Alaska Tsunami Warning Center 745-4214 ❑ Alaska State Troopers 486-4121 ❑ Kodiak Emergency Services Director 486-8640 ❑ Village Response Team (via VPSO or CHA) ❑ KIBSD (for assistance with sheltering) 486-9222/9223 	<ul style="list-style-type: none"> ❑ Confirm reports with AK Tsunami Warning Center and gather as much information as possible. ❑ Sound alarm/alert system. ❑ Attempt to notify outlying populations via VHF radio or SSB (fish camps, fishing vessels, etc. beyond city siren system). ❑ Initiate evacuation to high ground. Provide additional assistance to special populations as necessary. ❑ Identify safe location for sheltering evacuees. ❑ Establish shelters. Coordinate with KIBSD, Red Cross, Salvation Army. ❑ Initiate vessel/boat evacuations (to deep water), if safe to do so. ❑ Secure evacuated areas. ❑ Establish facility/safe location for emergency medical care. ❑ Activate IMT and establish EOC. ❑ Inventory communications capabilities and all other emergency resources.

PROTECT HUMAN LIFE FIRST!

Response Actions

Tsunami Response Checklist (cont.)

SITUATION	NOTIFICATIONS and CONTACTS (907-)	ACTIONS
Response and Recovery Phases: Tsunami is occurring/has occurred	<ul style="list-style-type: none"> ❑ American Red Cross 486-4040 ❑ Salvation Army 486-8740 ❑ KANA Medical (9 to 5) if injuries/deaths 486-9870 or 800-478-5721 ❑ PKIMC - Hospital (24-hour) if injuries/deaths 486-3281 ❑ ADES (disaster relief) 800-478-2337 ❑ FEMA (disaster relief) 800-395-6042 ❑ Ensure that all organizations listed under WARNING phase have been notified, as appropriate. 	<ul style="list-style-type: none"> ❑ Continue to monitor situation through Tsunami Warning Center. ❑ Keep a watch on sea conditions (from a safe location). ❑ Review Warning checklist. ❑ Establish emergency medical care facilities and arrange for medical evacuations, as necessary. ❑ Estimate initial damages and report to Borough, State, Federal agencies. ❑ Identify safety hazards and undertake corrective action. ❑ Arrange for debris clearance. ❑ Work to restore damaged utilities and transportation systems (airstrips, roadways, and port facilities). ❑ Arrange for emergency housing and sheltering as necessary. ❑ Work on monetary damage estimates for disaster declaration.

Response Checklist: VOLCANO

WARNING:

If WARNING TIME IS EXTREMELY LIMITED, there are two conditions that one must be concerned with regarding volcano activity: earthquakes and tsunamis. The second condition, tsunami, is the more emergent one. The threat of “local tsunami” can generate large waves with little or no warning. Historically, such waves have been the highest, reaching heights of 100 feet or more and up to one mile inland. Most of the community’s coastal areas are considered to have a “local tsunami” hazard.

SITUATION	NOTIFICATIONS and CONTACTS (907-)	ACTIONS
<p>Warning Phase: Threat of a Volcano Exists</p>	<ul style="list-style-type: none"> <input type="checkbox"/> Alaska Volcano Observatory 786-7497 <input type="checkbox"/> Alaska Tsunami Warning Center (to find out about tsunami generation) 745-4214 <input type="checkbox"/> Alaska State Troopers 486-4121 <input type="checkbox"/> Kodiak ESD 486-8640 <input type="checkbox"/> National Weather Service 800-472-0391 <input type="checkbox"/> Dept. of Transportation & Public Facilities (if roadways or airstrip are threatened) 487-4952 	<ul style="list-style-type: none"> <input type="checkbox"/> Evaluate forecasts & predictions. <input type="checkbox"/> Identify type of risk (mudslide, ash cloud, etc.) and areas at risk. <input type="checkbox"/> Identify high-risk populations (respiratory problems, etc.) who may need special attention or early evacuation. <input type="checkbox"/> Identify safe areas suitable for sheltering evacuees. <input type="checkbox"/> Ensure that evacuation routes are passable. <input type="checkbox"/> Estimate number of evacuees and arrange for shelter and feeding. <input type="checkbox"/> Arrange for public alert and warning. <input type="checkbox"/> Contact and warn outlying populations, small aircraft, fishing vessels, or others in the area who may be threatened by ash fall. <input type="checkbox"/> Inventory heavy equipment for use in response & recovery. <input type="checkbox"/> Preposition emergency equipment, fuel, and medical supplies in safe area for use after volcano.

Response Actions

Volcano Response Checklist (cont.)

SITUATION	NOTIFICATIONS and CONTACTS (907-)	ACTIONS
Response Phase: Volcano is occurring	<ul style="list-style-type: none"> <input type="checkbox"/> Village Response Team (via VPSO or CHA) <input type="checkbox"/> KANA Medical (9 to 5) 486-9870 or 800-478-5721 <input type="checkbox"/> PKIMC - Hospital (24-hour) 486-3281 <input type="checkbox"/> ADES (disaster relief) 800-478-2337 <input type="checkbox"/> FEMA (disaster relief) 800-395-6042 <input type="checkbox"/> KIBSD (for assistance with sheltering) 486-9222/9223 <input type="checkbox"/> American Red Cross 486-4040 <input type="checkbox"/> Salvation Army 486-8740 	<ul style="list-style-type: none"> <input type="checkbox"/> Review Warning checklist. <input type="checkbox"/> Establish a watch/observation system for volcano activity. <input type="checkbox"/> Continue to assess eruption situation. <input type="checkbox"/> Continue to disseminate public information. <input type="checkbox"/> Establish shelters if necessary. Coordinate with KIBSD, Red Cross, Salvation Army. <input type="checkbox"/> Secure evacuated areas. <input type="checkbox"/> Establish facility/safe location for emergency medical care. <input type="checkbox"/> Arrange for medical evacuations (through KANA/PKIMC) as necessary. <input type="checkbox"/> Estimate extent of damage.
Recovery Phase: Volcano has occurred	<ul style="list-style-type: none"> <input type="checkbox"/> Ensure that all organizations listed under WARNING and RESPONSE phases have been notified, as appropriate. 	<ul style="list-style-type: none"> <input type="checkbox"/> Review Warning & Response checklists. <input type="checkbox"/> Coordinate recovery activities with borough, state, and federal relief agencies. <input type="checkbox"/> Identify safety hazards and undertake corrective action. <input type="checkbox"/> Arrange for debris clearance. <input type="checkbox"/> Work to restore damaged utilities and transportation systems (airstrips, roadways, and port facilities). <input type="checkbox"/> Arrange for emergency housing as necessary. <input type="checkbox"/> Work on monetary damage estimates for disaster declaration.

Response Checklist: WEATHER EXTREMES

SITUATION	NOTIFICATIONS and CONTACTS (907-)	ACTIONS
Warning Phase: Threat of Extreme Weather/ High Winds Exists	<ul style="list-style-type: none"> ❑ Alaska State Troopers 486-4121 ❑ National Weather Service 800-472-0391 ❑ Kodiak Emergency Services Director 486-8640/8000 ❑ Dept. of Transportation & Public Facilities (if roadways or airstrip are threatened) 487-4952 	<ul style="list-style-type: none"> ❑ Confirm forecasts with National Weather Service. ❑ Identify areas at risk. ❑ Disseminate public information. ❑ Assess current levels of heavy equipment for snow removal, etc. ❑ Assess fuel levels. Initiate conservation programs as necessary. ❑ Check generators and other backup power. ❑ Preposition emergency equipment, fuel, and medical supplies in safe area for use after extreme weather is over. ❑ Arrange for safe delivery of incoming response personnel and supplies.
Response Phase: Extreme weather is occurring	<ul style="list-style-type: none"> ❑ Salvation Army 486-8740 ❑ KANA Medical (9 to 5) if injuries/deaths 486-9870 or 800-478-5721 ❑ PKIMC - Hospital (24-hour) if injuries/deaths 486-3281 ❑ KIBSD (for assistance with sheltering) 486-9222/9223 ❑ American Red Cross 486-4040 ❑ ADES (disaster relief) 800-478-2337 ❑ FEMA (disaster relief) 800-395-6042 	<ul style="list-style-type: none"> ❑ Review Warning checklist. ❑ Continue to monitor forecasts. ❑ Continue to disseminate public information. ❑ Keep in communication with state/federal emergency response agencies. ❑ Determine the need to establish shelters for those who may be without heat or essential services. Coordinate with KIBSD, Red Cross, Salvation Army. ❑ Establish facility/safe location for emergency medical care. ❑ Arrange for medical evacuations (through KANA/PKIMC) as necessary. ❑ Estimate extent of damage.

Response Actions

Extreme Weather Response Checklist (cont.)

SITUATION	NOTIFICATIONS and CONTACTS (907-)	ACTIONS
Recovery Phase: Extreme Weather has occurred	<input type="checkbox"/> Ensure that all organizations listed under WARNING and RESPONSE phases have been notified, as appropriate.	<input type="checkbox"/> Review Warning & Response checklists. <input type="checkbox"/> Coordinate recovery activities with borough, state, and federal relief agencies. <input type="checkbox"/> Identify safety hazards and undertake corrective action. <input type="checkbox"/> Arrange for snow and debris clearance. <input type="checkbox"/> Work to restore damaged utilities and transportation systems (airstrips, roadways, and port facilities). <input type="checkbox"/> Arrange for emergency housing as necessary. <input type="checkbox"/> Work on monetary damage estimates for disaster declaration.

OLD HARBOR SIREN ALERT AND WARNING SYSTEM

In Old Harbor, public alert and warning of a disaster emergency can be carried out using one or more of the following methods:

- 1) Siren/alert system.
- 2) Emergency Alert System (EAS) - transmitted through Kodiak via Commercial radio channels.
- 3) Mobile public address system
- 4) Door to door contact.

Siren Alert System

- Old Harbor has both a fixed siren system and a mobile siren mounted on the fire truck.
- The Old Harbor fixed siren system should be sounded for any emergency (most likely tsunami) where a public response such as evacuation or shelter-in-place (hazardous materials release) is required.
- Mobile public address may be used in addition to the siren system to explain the nature of the emergency and actions required to the affected public.

Emergency Alert System

- The Emergency Alert System (EAS) consists of broadcast radio and television stations linked together and to government offices to provide emergency alert and warning to the public.
- EAS warnings are broadcast via Kodiak radio and television stations, therefore this system is not practical for highly localized emergencies.
- EAS messages are broadcast on the following local frequencies:
K269OH 100.1 FM -- Public Radio translator for Old Harbor

Warning and Evacuation

Mobile Public Address System

- In Old Harbor, the fire truck is the mobile public address system.
- The Incident Commander will direct the VPSO, Fire Chief, or other qualified personnel to broadcast messages via mobile public address.
- Mobile public address may be used by itself or to supplement fixed sirens or other alert and warning systems.
- Mobile public address messages should briefly explain the nature of the emergency and the type of public response required.

Door to Door Alert

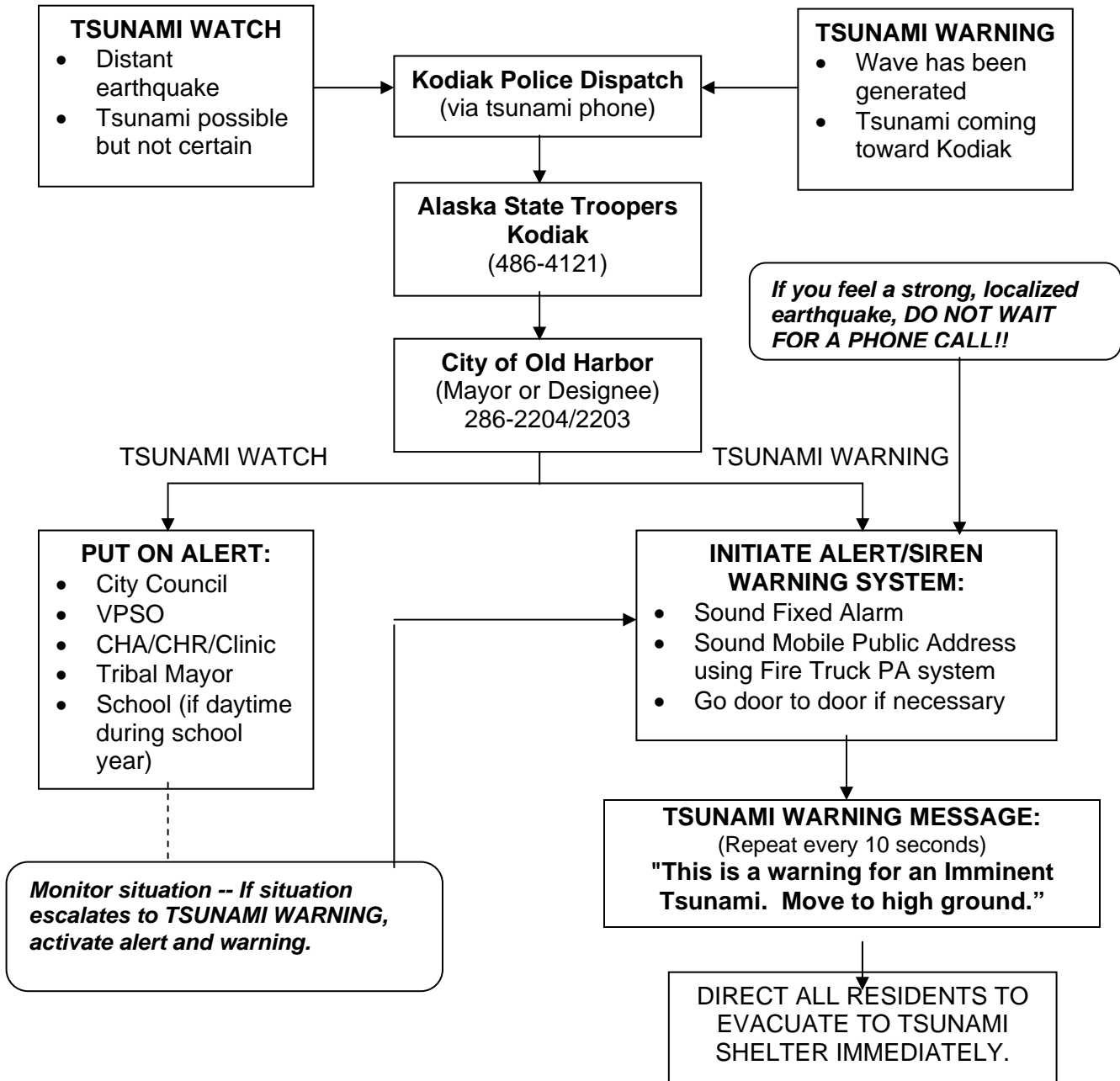
- Door to door alert may be necessary in the event of a rapidly emerging incident which poses a clear threat to public safety.
- Residents will be directed to temporary shelter depending upon the weather, and the expected duration of the emergency.
- Door to door alert messages should briefly explain the nature of the emergency and the type of public response required.

Special Populations

- Special populations include village elders, senior citizen centers, schools, clinic patients, day care centers, and other concentrations of people with health problems or special needs.
- Regardless of the emergency alert and/or warning system used, these special populations may require additional, targeted warnings, especially if evacuation is necessary.
- In Old Harbor, the school, clinic, and village elders will be considered as special populations and therefore given priority and special assistance in any community-wide evacuation.

TSUNAMI ALERT AND WARNING PROCEDURES

ALASKA TSUNAMI WARNING CENTER
(907) 745-4214



Warning and Evacuation

(This page intentionally blank.)

SAMPLE ALERT AND WARNING MESSAGES

GENERAL INFORMATION MESSAGE

“At (time) today, (jurisdiction name) public safety officials reported an (describe the event, emergency, incident). The (event) occurred at (location and time) today. The City Mayor and/or VPSO request that all persons in Old Harbor should listen to the radio or television for further information.”

SHELTER IN PLACE MESSAGE

“At (time) today, (jurisdiction name) public safety officials reported an industrial accident involving hazardous materials. The accident occurred at (location and time) today. The City Mayor, Fire Chief, and/or VPSO request that all persons in (names of areas) should remain inside their houses or other closed building until their radio, television, or public safety officials say they can leave safely. If you are in the affected area, go indoors and remain inside. Turn off heating, ventilation, and cooling systems and window or attic fans. Close all windows, doors and vents, and cover cracks with tape or wet rags. Keep pets and children inside. If you are inside and experience difficulty breathing, cover your mouth and nose with a damp cloth. If you are outside, cover your nose and mouth with a handkerchief or other cloth until you can reach a building. Failure to follow these instructions may result in exposure to the hazardous materials. Listen to the radio or television for further information.”

Warning and Evacuation

PREPARE TO EVACUATE MESSAGE

“At (time) today, (jurisdiction name) public safety officials reported a potentially serious condition involving (description of situation). The incident is occurring at (location). The City Mayor, and/or VPSO request all persons in (affected area) to stay indoors and prepare to evacuate. If you are in your home, gather all necessary medications and clothing. You do not need to evacuate at this time, but stay tuned to this station for further instructions. This message will be repeated at intervals until conditions change.”

EVACUATION MESSAGE

“At (time) today, (jurisdiction name) public safety officials reported an incident involving (description of situation). The incident occurred at (location and time). The City Mayor, Fire Chief, and/or VPSO request all persons in (names of area) to evacuate the area in an orderly manner. Please take the following actions to secure your home before you leave (instructions may include shutting off gas and water, etc.). Drive or walk toward (evacuation route). Emergency personnel will be along this route to direct you out of the area. Please observe normal traffic laws. Failure to leave the area may result in severe injury or death. This message will be repeated until conditions change.”

OLD HARBOR EVACUATION PROCEDURES

The basic approach to evacuation is the same regardless of the type of threat.

- Determine the area at risk, then to compare the risks associated with evacuation with the risks of leaving the threatened population in place.
- Designate appropriate low risk areas, provide automobile or ATV transportation for those without private transportation, open and staff shelter to house and feed the evacuated population, and provide clear and understandable instructions to the public.

Evacuation may occur in one of two manners.

- Local residents may be evacuated from their homes into one or more pre-designated shelters or into the safe homes of neighbors and family.
- Or, a situation may be severe enough that the most or all of the population of Old Harbor will be evacuated outside of the community, either to a neighboring community, a facility such as a cannery, a barge or other temporary housing structure, or to the City of Kodiak.

Evacuation Considerations

Not all emergencies require evacuation. It is essential to weight the risks of the hazard danger against the risks of evacuating or sheltering in place. Before an evacuation can be implemented, the following activities must take place:

- Identify high hazard areas, including those areas which may be impacted if the incident escalates or conditions change.
- Identify potential evacuation routes, their capacities, and vulnerability to the hazard.
- Alert and warn the public at risk. Include specific information about the risk, the protective actions which need to be taken, and the possible risks of noncompliance.
- Certain populations or concentrations of people require special consideration when evacuation occurs. Special populations include village elders, senior centers, schools, clinic patients, and others with special evacuation needs.
- Special populations must receive ample warning and assistance to safely and successfully carry out an evacuation.

Warning and Evacuation

Evacuation Guidelines

- ❑ Determine the need to evacuate an area and define the extent of the area to be evacuated.
- ❑ Develop an evacuation plan (Where are you evacuating to? What will routes be?)
- ❑ Activate the alert and warning system, and broadcast evacuation information. Warn the public of the emergency condition, and provide the public with evacuation and shelter information.
- ❑ Ensure that extra measures are taken to evacuate special populations, including schools, hospitals, and nursing homes, as necessary.
- ❑ Identify appropriate reception areas for evacuees.
- ❑ As the emergency response progresses and more information becomes available, utilize the procedures described in Public Information Section of this plan to provide the media and the public with information on:
 - Modes of transportation for evacuees unable to provide their own.
 - The reason for the evacuation.
 - The location of reception areas or shelters.
 - Possible results of failure to evacuate.
- ❑ Ensure that an official evacuation order is signed by the Mayor or designee(s).
- ❑ Notify Alaska State Troopers of the evacuation (486-4121).
- ❑ If it is anticipated that shelters will be needed, contact the Kodiak Island Borough School District (486-9222/9223) as well as the American Red Cross/The Salvation Army.
- ❑ After the emergency event has ended:
 - Allow the early return of persons needed to staff essential services and to open vital businesses as soon as this can be done safely.
 - Direct a general return to the evacuated area as soon as possible.

Other Evacuation Considerations

Family Pets

Household pets within an evacuation area can become a substantial problem. Plans need to be developed to handle pets at the evacuation centers to minimize psychological impact. Provisions need to be made to house and care for pets either at the evacuation shelter or off site.

Special Populations

Special populations include the elderly, the sick, school populations, and other large concentrations of people, especially those who may require additional care or assistance. Special populations within the community should be pre-identified and plans developed to assist them in an evacuation.

Methods of Evacuation

The following procedures cover door-to-door and mobile public address processes. These methods may be conducted singly or in combination, possibly also using sirens. Before initiating any type of evacuation, the persons responsible for either door to door or mobile public alert should be provided with the following information:

- Type of incident, expected duration, and available time to evacuate.
- Recommended actions and implications of not following actions.
- Evacuation route and Reception/shelter point.
- Radio station, VHF frequency, or phone number with more information.

Mobile Public Address

Mobile public address is more time efficient than door to door contact, but is able to convey only a limited amount of information. It is most effective when used in combination with a siren system and door to door contact.

To Conduct Mobile Public Address Evacuation:

1. Receive evacuation information from Incident Commander or supervisor. Read message aloud using public address system (either hand-held or built-in)
2. Repeat message at each intersection or every thirty (30) seconds.

Warning and Evacuation

Door to Door Evacuation

Door to door contact is an effective, but time and labor intensive method of alerting, warning, and evacuating an area. More detailed information can be shared with the population, and positive confirmation can be made that individuals have received the warning, understood the instructions, and know the consequences of their actions.

To Conduct a Door to Door Evacuation:

1. Knock, ring bell, etc. Allow at least one minute for response, more at night.
2. If no answer, document time and address, move to next facility.
3. If answered, “hand-out” or read prepared evacuation order, and determine:
 - How many persons are in the building.
 - Whether they intend to leave, have a place to go, and transportation.
4. If they intend to leave and have transportation:
 - Document time and address.
 - Mark the building in a conspicuous place to indicate that contact has been made.
 - Go to next facility.
5. If they do not intend to leave:
 - Ask if they understand the possible dangers if they stay.
 - Document the time, address, and number of people remaining.
 - Mark the building in a conspicuous place to indicate that contact has been made.
 - Move to next facility.
6. If they intend to leave, but do not have transportation:
 - Document the number of people needing assistance, the time and address, and special transportation requirements.
 - Report this information immediately to your supervisor.
 - Advise citizens who are able to walk to proceed to the designated congregation point.
 - Do not stop your activities to remove them from the area.
7. If they intend to leave, but do not have a place to go:
 - Refer them to the shelter or reception point.
 - Document time and action taken.
 - Mark the building in a conspicuous place to indicate contact has been made.
 - Move to the next facility.

Medical Evacuation

Medical evacuation of a patient from Old Harbor to hospital facilities in Kodiak or Anchorage requires the endorsement of a physician. The procedures for initiating a medical evacuation (medivac) are as follows:

1. CHA, CHR, VRT, VPSO, or clinic staff with appropriate medical training contacts KANA Medical (486-9870) or, after hours, Providence Kodiak Island Medical Center (486-3281).
2. Physician at KANA or PKIMC will discuss situation over the phone with CHA, CHR or other clinic staff and determine whether medivac is appropriate.
3. If medivac is indicated, KANA or PKIMC physician will contact U.S. Coast Guard Air Station Kodiak to determine availability of helicopter support.
4. KANA/PKIMC physician will arrange for helicopter transport, either using U.S. Coast Guard helicopter or other commercial carrier (Med Flight, private charter), as appropriate.
5. CHA, CHR, and/or clinic staff in Old Harbor will follow physician's directions and prepare patient for medical transport.

In case of nighttime transport, it may be necessary to request support from local vehicles to light helipad or landing strip

Warning and Evacuation

Shelter in Place

Not all emergencies require evacuation. “Shelter in place” may be a viable option to protect the public by instructing local residents to remain indoors at their home, place of business, school, etc. The Incident Commander must weigh the risk of the hazard danger against the risk inherent in evacuation versus protection in place.

The following procedures are used to shelter in place:

1. Persons should go indoors and remain inside their houses or other closed building until their radio, television, or public safety officials say they can leave safely. Listen to the radio or television for further information.
2. Persons in the affected area should close and lock all doors and windows. Turn off heat, ventilation, and cooling systems and window or attic fans. Close all windows, doors and vents, and cover cracks with tape or wet rags.
3. Go to an interior room, if possible, and seal it by closing all vents and covering cracks with tape.
4. Keep pets and children inside.
5. Persons who are inside and experience difficulty breathing should cover their mouth and nose with a damp cloth.
6. Persons who are outside should cover their nose and mouth with a handkerchief or other cloth until they can reach a building.

SAMPLE EVACUATION ORDER

An emergency condition exists in the _____
_____ (give location and/or areas impacted).

The Old Harbor City Mayor, VPSO, or designee has determined that there is the need to evacuate portions of the Old Harbor area.

Such evacuation is needed to ensure the safety of the public.

Therefore:

The Old Harbor City Mayor is requesting the immediate evacuation of:

The City of Old Harbor is restricting all entry into the hazard area. No one will be allowed to re-enter the area after _____ (time) AM/PM.

Information and instructions will be transmitted by radio from _____ (list radio frequencies or other means of broadcasting public information).

The Mayor or designee will advise the public of the lifting of this order when public safety is assured.

Date _____

Signed _____
Old Harbor City Manager or Designee

Signed _____
Old Harbor VPSO or Designee

Warning and Evacuation

(This page intentionally blank.)

DISASTER ASSISTANCE

Introduction

Disaster assistance from mutual aid agencies and state and federal entities will be enhanced by prompt and thorough reporting of the disaster conditions.

This section outlines the disaster emergency declaration and reporting processes and damage assessment procedures which the Old Harbor Incident Commander will implement in the event of a disaster emergency.

Declaration of Local Disaster Emergency

- The City of Old Harbor Mayor or designee has the legal authority to declare a local disaster emergency, under local ordinance, Kodiak City Code Chapter 2.32, KIB Code Chapter 2.41, and AS 26.23.140.
- A local disaster emergency declaration may be necessary to expedite procurement of Kodiak Island Borough/City of Kodiak response resources and access state and federal disaster assistance.
- If the City Mayor is unable to act due to absence or incapacity, the Vice Mayor or next person in the local chain of succession will exercise local disaster emergency declaration authority.
- The declaration of a local disaster emergency must include a description of the situation and existing conditions, must delineate the geographic boundaries, and must outline what special powers are being activated by the City of Old Harbor.
- In the event that Old Harbor is declaring a local disaster emergency for the purposes of expediting procurement of borough response resources or requesting disaster assistance directly from the State of Alaska, use the model declaration forms found in this section.
- The Alaska Division of Emergency Services (ADES) makes recommendations on disaster declarations with requests for State assistance and forwards those recommendations to the Governor's Office.
- Most declarations, along with ADES' recommendations, will also be reviewed by the Governor's Disaster Policy Cabinet before going to the Governor.

Disaster Declaration and Reporting

Reporting

Accurate incident status summaries are important to decision makers within the Old Harbor Incident Management Team (IMT), as well as to assisting outside agencies and the public.

- The State of Alaska “Situation Report” (Appendix D), shall be completed as soon as possible after the onset of an emergency, and shall be updated at least every 12 hours thereafter.
- The State of Alaska Situation Report shall be prepared and distributed via phone, fax, e-mail, radio, hard copy, etc. to at least the following:
 - Kodiak Emergency Services Director
 - Alaska Division of Emergency Services
 - Assisting federal and state agencies
- The Old Harbor Incident Commander may also distribute State of Alaska Situation Reports to the media, the public, assisting agencies, adjacent jurisdictions, and volunteer organizations.

Damage Assessment should begin immediately after the onset of a disaster, as preliminary damage assessment information may be crucial to obtaining outside assistance. FOR DAMAGE ASSESSMENT PROCEDURES, REFER TO SECTION 8.

EMERGENCY RESPONSE AGENCIES AND RESOURCES AVAILABLE OUTSIDE THE COMMUNITY

This table provides information about various local, state, and federal agency branches to contact in case of emergencies. The information in this table corresponds with the notification directions in the hazard-specific response checklists.

AGENCY NAME & Location	PHONE (907-)	Primary Contact in case of:	Secondary Contact in case of:	Additional Assistance & Resources Available
Alaska State Troopers (AST) Kodiak	486-4121 or 911	<ul style="list-style-type: none"> • Crime • Landslide • Drought • Tsunami • Earthquake • Transportation Accident • Search & Rescue 	<ul style="list-style-type: none"> • Wildland or structural fire • Coastal Erosion • Extreme Weather • Volcano • Mass casualty 	<ul style="list-style-type: none"> • Law enforcement • Peacekeeping • Search & Rescue • Liaison with state/federal agencies • Evacuation • Misc. emergency-related services
KANA Medical Clinic Kodiak	486-9807 (9 to 5)	<ul style="list-style-type: none"> • Mass Casualty • Medical Emergency (9 to 5) • Social issues 	<ul style="list-style-type: none"> • Transportation Accident • All emergencies w/injuries 	<ul style="list-style-type: none"> • Emergency medical care • On-call doctors • Arrange for medical evacuation
Providence/ Kodiak Island Medical Center (PKIMC)Kodiak	486-3281 (after hours)	<ul style="list-style-type: none"> • Mass Casualty • 24 hr medical Emergency 	<ul style="list-style-type: none"> • Transportation Accident • All emerg. w/ injuries 	<ul style="list-style-type: none"> • Emergency medical • Medical evacuation • 24-hour emergency care • Temporary morgue
Kodiak Emergency Services Director (via Kodiak Police Dispatch)	486-8640	<ul style="list-style-type: none"> • Coastal Erosion • Extreme Weather • Volcano • Misc. emergencies 	<ul style="list-style-type: none"> • Landslide • Drought • Tsunami • Earthquake • Hazmat Release 	<ul style="list-style-type: none"> • Disaster declaration • Access to city & borough emergency response resources • Liaison with state/federal agencies
Kodiak Area Fire & Rescue	486-8040 or 911	<ul style="list-style-type: none"> • Structural Fire • Hazmat Release 	<ul style="list-style-type: none"> • Wildland Fire • Search & Rescue (land) • Volcano 	<ul style="list-style-type: none"> • Firefighting • Emergency medical services
USCG Marine Safety Detachment	486-5918	<ul style="list-style-type: none"> • Oil Spill 	<ul style="list-style-type: none"> • Transportation Accident (marine/air) 	<ul style="list-style-type: none"> • Oil spill/pollution response equipment and personnel

Disaster Declaration and Reporting

AGENCY NAME & Location	PHONE (907-)	Primary Contact in case of:	Secondary Contact in case of:	Additional Assistance & Resources Available
USCG Air Station Kodiak	487-5888	<ul style="list-style-type: none"> • Search and Rescue (water) • Medivac 	<ul style="list-style-type: none"> • 	<ul style="list-style-type: none"> • Helicopter and aircraft support
ADNR Division of Forestry (Kenai)	262-4124	<ul style="list-style-type: none"> • Wildland Fires 		<ul style="list-style-type: none"> • Trained personnel and equipment for wildland fire response.
Providence/ Kodiak Island Mental Health Center (PKIMHC)	481-2400	n/a	<ul style="list-style-type: none"> • Mass Casualty • Transportation Accident • Any disaster involving major loss of life or property in community 	
Kodiak Area Native Association (KANA) Kodiak	486-9870 or 800-478-5721	n/a	<ul style="list-style-type: none"> • All disasters, especially those with a community impacts component. 	<ul style="list-style-type: none"> • Non-medical social services • Critical Incident Stress Debriefing • BIA burial assistance (AKH, OH)
Kodiak Island Borough School District (KIBSD)	486-9233	n/a	<ul style="list-style-type: none"> • All disasters where SHELTERS needed 	<ul style="list-style-type: none"> • SHELTERING • Some trained personnel & shelter resources.
American Red Cross, Kodiak Chapter	486-4040	n/a	<ul style="list-style-type: none"> • All disasters where SHELTERS needed 	<ul style="list-style-type: none"> • Shelters • General disaster relief • Donations management
The Salvation Army Kodiak	486-8740	n/a	<ul style="list-style-type: none"> • All disasters where SHELTERS or food/clothes needed. 	<ul style="list-style-type: none"> • Shelters • General disaster relief (food, clothing)

SAMPLE LOCAL GOVERNMENT DISASTER DECLARATION WITHOUT REQUEST FOR STATE OR BOROUGH ASSISTANCE

Comments

A brief description of the disaster or emergency, when it happened and where it struck

A statement describing the political subdivision.

A statement outlying the disaster or emergency conditions, areas affected, damages.

A statement that local capability has been exceeded.

A statement by the appropriate principal executive officer authorized to declare a disaster emergency.

Signature of principal executive officer authorized by local ordinance.

Example

WHEREAS, commencing on (date), the City of Old Harbor, Alaska sustained severe losses and threats to life and property from (describe the event or situation); and,

WHEREAS, the City of Old Harbor is a political subdivision within the State of Alaska; and,

WHEREAS, the following conditions exist as a result of the disaster emergency (describe the event and the impacts to community, damages, and etc.); and,

WHEREAS, the severity and magnitude of the emergency is beyond the timely and effective response capability of local resources; and,

THEREFORE, be it resolved that the City of Old Harbor does declare a Disaster Emergency per AS 26.23.140 to exist in Old Harbor.

SIGNED this _____ day of _____
19____

(City of Old Harbor Mayor or designee)

Disaster Declaration and Reporting

(This page intentionally blank.)

SAMPLE LOCAL GOVERNMENT DISASTER DECLARATION WITH REQUEST FOR BOROUGH ASSISTANCE

Comments

A brief description of the disaster or emergency, when it happened and where it struck

A statement describing the political subdivision.

A statement outlying the disaster or emergency conditions, areas affected, damages.

A statement that local capability has been exceeded.

A statement by the appropriate principal executive officer authorized to declare a disaster emergency.

A request that the borough mayor designate the Political Subdivision a disaster area and request State assistance

A brief statement and estimated value of local government commitment to the disaster. This can be "in-kind" use of equipment or personnel.

Signature of principal executive officer authorized by local ordinance.

Example

WHEREAS, commencing on (date), the (city, or local government), Alaska sustained severe losses and threats to life and property from (describe the event or situation); and,

WHEREAS, the City of Old Harbor is a political subdivision within the Borough of (name of borough); and,

WHEREAS, the following conditions exist as a result of the disaster emergency (describe the event and the impacts to community, damages, and etc.); and,

WHEREAS, the severity and magnitude of the emergency is beyond the timely and effective response capability of local resources; and,

THEREFORE, be it resolved that the City Mayor of Old Harbor does declare a Disaster Emergency per AS 26.23.140 to exist in Old Harbor.

FURTHERMORE, it is requested that the borough mayor declare a Disaster Emergency to exist as described in AS 26.23 and provide borough assistance to Old Harbor in its response and recovery from this event.

FURTHER, the undersigned certifies that the City of Old Harbor has or will expend local resources in the amount of _____, as a result of this disaster for which no borough reimbursement will be requested.

SIGNED this _____ day of _____
19____

(City of Old Harbor Mayor or designee)

Disaster Declaration and Reporting

(This page intentionally left blank.)

SAMPLE LOCAL GOVERNMENT DISASTER DECLARATION WITH REQUEST FOR STATE ASSISTANCE

Comments

A brief description of the disaster or emergency, when it happened and where it struck

A statement describing the political subdivision.

A statement outlying the disaster or emergency conditions, areas affected, damages.

A statement that local capability has been exceeded.

A statement by the appropriate principal executive officer authorized to declare a disaster emergency.

A request that the Governor designate the Political Subdivision a disaster area and request State assistance

A brief statement and estimated value of local government commitment to the disaster. This can be "in-kind" use of equipment or personnel.

Signature of principal executive officer authorized by local ordinance.

Example

WHEREAS, commencing on (date), the City of Old Harbor, Alaska sustained severe losses and threats to life and property from (describe the event or situation); and,

WHEREAS, the City of Old Harbor is a political subdivision within the State of Alaska; and,

WHEREAS, the following conditions exist as a result of the disaster emergency (describe the event and the impacts to community, damages, and etc.); and,

WHEREAS, the severity and magnitude of the emergency is beyond the timely and effective response capability of local resources; and,

THEREFORE, be it resolved that the City Mayor does declare a Disaster Emergency per AS 26.23.140 to exist in Old Harbor.

FURTHERMORE, it is requested that the Governor declare a Disaster Emergency to exist as described in AS 26.23 and provide State assistance to the City of Old Harbor in its response and recovery from this event.

FURTHER, the undersigned certifies that the City of Old Harbor has or will expend local resources in the amount of _____, as a result of this disaster for which no State or Federal reimbursement will be requested.

SIGNED this _____ day of _____
19____

(City of Old Harbor Mayor or designee)

Disaster Declaration and Reporting

(This page intentionally blank.)

STATE OF ALASKA SITUATION REPORT

(Incident Name)

Incident #	Date/Time:	Prepared By:
-------------------	-------------------	---------------------

1. JURISDICTION NAME:

2. CASUALTY STATUS:

a. Confirmed Dead:

b. Missing:

c. Injured:

**d. Estimated Sheltered
Population:**

3. GENERAL SITUATION:

4. ROAD CLOSURES:

5. CURRENT SHELTERING/EVACUATION STATUS:

Total Shelters Open:

Total Registered at Shelter:

Total Persons Sheltered Last Night:

Disaster Declaration and Reporting

STATE OF ALASKA SITUATION REPORT

6. CURRENT PRIORITY NEEDS:

7. FUTURE OUTLOOK/PLANNED ACTIONS:

8. WEATHER:

9. OTHER COMMENTS:

10. STATE EMERGENCY COORDINATION CENTER OPERATIONS:

Hours of Operation:

Phone Contacts:

OLD HARBOR INCIDENT MANAGEMENT TEAM

- The **Incident Management Team** described here uses a broad, all hazard emergency management system designed to address mitigation, preparedness, response, and recovery activities.
- This system follows the NIIMS-ICS model for incident command. ICS is designed around the following principles:
 - Flexible enough to expand or contract based on the size of the incident.
 - Preserves essential incident management functions regardless of the size of the response.
 - Uses common terminology and organizational structures to allow for integration of response personnel and managers from different organizations and jurisdiction.
- The ICS format breaks incident management into five basic functions:
 - Command
 - Operations
 - Logistics
 - Planning
 - Finance/Administration.
- For small-scale incidents that can be managed wholly within the resources and capabilities of the community, the Old Harbor Incident Management Team (IMT) may use the five basic ICS functions to organize incident management and emergency response functions.
- For incidents that require supplemental response and/or incident management resources from the Kodiak Emergency Services Organization, the Old Harbor IMT will form the initial incident command, and this organization will eventually be expanded to a full ICS organization, integrating with the Kodiak Incident Management Team described in the Kodiak Emergency Operations Plan.
- In a regional disaster, local personnel from the Old Harbor IMT may be incorporated into the Kodiak Incident Management Team.
- The Old Harbor Incident Management Team should be composed of qualified community members. The qualified personnel roster on the following pages identifies potential IMT personnel, however, every incident will be different.

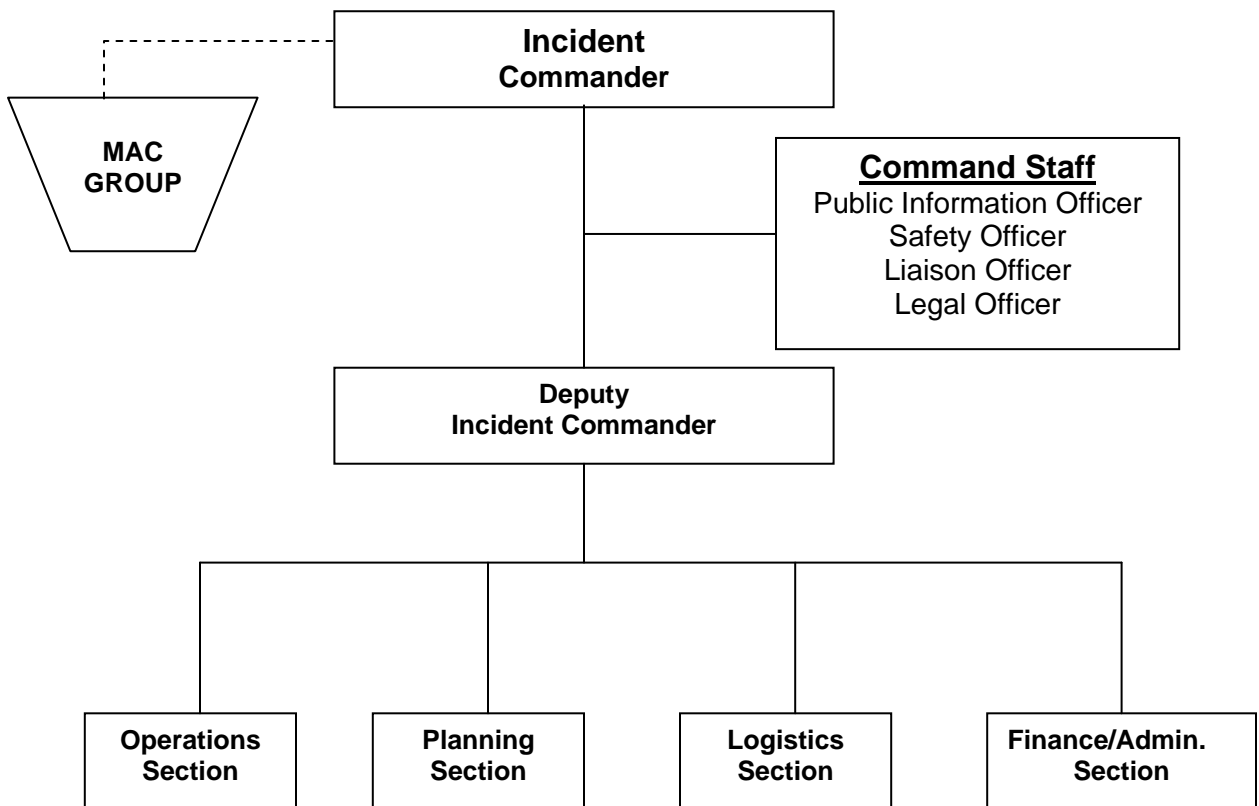
Old Harbor Community Emergency Response Plan

Organizing for Emergencies

Incident Command System (ICS) Organization and General Principles

- The Old Harbor Incident Management Team will follow the NIIMS-ICS organization, where incident response functions are broken out into five areas: Command, Operations, Logistics, Planning, and Finance/Administration.
- In a fully developed ICS, each of these five functions may be subdivided several times over and staffed by up to several hundred individuals.
- Smaller incidents may be managed using the same system, where one person may assume more than one incident management functions.

The basic organization under ICS is as follows:



Command Levels

The command function within the ICS may be organized in two general ways: as a **Single Command** or a **Unified Command**.

Single command

- When an incident occurs within an area that has one department/agency with jurisdictional authority.
- When there is no overlapping of jurisdictional authority.
- The single Incident Commander will prepare incident objectives that will be the foundation upon which action planning will be based.

Unified Command

- When an incident occurs within an area with one or more departments/agencies with jurisdictional authority.
- When the resources and personnel of a single agency are not sufficient to mount an effective response.
- Incident commanders or designated representatives from each of the agencies with jurisdiction work together in a Unified Command to establish a common set of objectives and strategies and a single Incident Action Plan.
- The Unified Command may select from among themselves a person to serve as Incident Commander.
- Under a Unified Command, the IC carries out the objectives as set by the Unified Command.

INCIDENT MANAGEMENT TEAM POSITION DESCRIPTIONS

The **Incident Management Team** is lead by the **Incident Commander(IC)**, who is responsible for the management and oversight of all incident activities, including developing strategic objectives and approving the ordering and release of resources.

The Incident Commander will lead an **Incident Management Team (IMT)** composed of both General Staff and Command Staff personnel. The **General Staff** consists of the following four Sections:

- Operations Section
- Planning Section
- Logistics Section
- Finance Sections

The **Command Staff** is composed of four sub-functional positions:

- Public Information Officer
- Safety Officer
- Liaison Officer
- Legal Officer

Volume 3 of the Kodiak Emergency Operations Plan contains detailed checklists for all ICS positions.

Command Section

Incident Commander

- The **Incident Commander** supervises Command Staff and General Staff positions.
- The Incident commander will participate in any decision regarding whether to activate specific Incident Management Team functional units.
- In Old Harbor, the **Incident Commander** will be the **City Mayor** or designee.
- For some incidents, the city council and/or tribal council may provide guidance to the Incident Commander through a MAC or Multi-agency Coordinating Group.
- The Incident Commander may choose to activate the Deputy Incident Commander position and delegate some of the IC's duties to this Deputy.

Public Information Officer

- The Public Information Officer is responsible for the formulation and release of information about the incident to the public, the news media and other appropriate agencies and organizations.
- The Public Information Officer reports to the Incident Commander, and supervises the Information Officer Staff, if any personnel are assigned to this position.

Safety Officer

- The Safety Officer is responsible for monitoring and assessing hazardous and unsafe situations and developing measures for assuring personnel safety.
- The Safety officer will correct unsafe acts or conditions through the regular line of authority, or may exercise emergency authority, to stop or prevent unsafe acts when immediate action is required.
- The Safety officer maintains awareness of active and developing situations and includes safety messages in each Incident Action Plan.
- The Safety Officer reports to the Incident Commander and supervises the Assistant Safety Officer(s) and any additional Safety staff.

Liaison Officer

- The Liaison Officer is responsible for communicating with local, state, and federal government agencies.
- If these agencies assign representatives to the IMT, the Liaison Officer will coordinate their activities and relieve the Incident Commander of as much government liaison work as practical.
- The Liaison Officer reports to the Incident Commander and supervises a Liaison staff, which may include agency representatives.

Organizing for Emergencies

Legal Officer

- The Legal Officer is responsible for providing legal advice on all aspects of IMT involvement.
- The Legal Officer reports to the Incident Commander and supervises the legal staff, as assigned.
- ***A legal officer is not necessarily involved in every incident.***

General Staff

Operations Section

- The Operations Section is led by a Section Chief who reports directly to the Incident Commander.
- The Operations Section includes personnel directly involved with incident tactical activities.
- The Operations Section Chief manages these tactical activities and assists in the formulation of the Incident Action Plan.
- Most operations section personnel are placed in the field to supervise and accomplish the tactics set forth in the incident action plan.
- The Operations Section Chief(s) must divide their time between the field and the EOC.
- Additional operations section personnel such as division/group supervisors, strike team/task forces leaders, air operations branch director and others, will need to interface with the EOC to provide information on the status of the operational activities.

Planning Section

- The Planning Section is led by a Section Chief who reports directly to the Incident Commander.
- Planning Section personnel monitor the incident status, develop and modify incident strategies and disseminate information as necessary to facilitate incident management and organization.
- The Planning Section Chief manages the collection, evaluation, management, and dissemination of all operational information concerning the incident.
- This information is used to assess the current situation; predict the probable course of incident events; prepare alternative strategies; and coordinate and mobilize all available resources.
- The Planning Section Chief is also responsible for the preparation of Incident Action Plans.
- The Planning Section is often divided into four primary units - Resource Status, Situation Status, Documentation and Demobilization Units.
- A number of technical specialists may also work within these units of the Planning Section to assist in evaluating the incident and forecasting requirements for additional personnel and equipment.
- Each of the four units are headed by Unit Leaders.
- The Planning Section Chief will appoint unit leaders as needed for the incident response, and the Unit Leaders will appoint staff as needed to fulfill their functions.

Organizing for Emergencies

Logistics Section

- The Logistics Section is responsible for obtaining and delivering resources as well as providing all service and support functions for the incident.
- Approval to order and allocate resources is the responsibility of the Incident Commander. This authority can be delegated to the Logistics Section Chief.
- The Logistics Section Chief is a member of the General Staff and reports directly to the Incident Commander.
- The Section Chief's primary responsibilities include activation of the Logistics Section and participation in the development and implementation of priorities and objectives for the Incident Action Plan.
- The Logistics Section is comprised of two major branches: Service and Support, each of which contains several units.
- Each branch is led by a Branch Director, who supervises the Unit Leaders operating within each branch.
- Activation of Service and Support units will vary with each incident.

Finance/Administration Section

- The Finance and Administration Section is responsible for providing accounting functions, including maintaining an audit trail, billing, invoice payments, and documentation of labor, materials, and services used during incident activities.
- The Finance Section Chief, a member of the general staff, is responsible for all financial and cost analysis aspects of the incident and for supervising Unit Leaders within the Finance Section.
- The Finance Section includes the Time, Procurement, Compensation/Claims, and Cost Units.
- Position description and checklists for each unit are provided in this section.

OLD HARBOR INCIDENT MANAGEMENT TEAM QUALIFIED PERSONNEL ROSTER

The Qualified Personnel Roster identifies local personnel who may fill various positions during an activation of the Old Harbor Incident Management Team. It is important that ICS staffing remains a flexible, dynamic process. Because Old Harbor is a small community with a limited number of trained personnel, individuals listed below may not necessarily serve in the positions indicated, depending on the incident specifics.

Name	Title	Phone Number (907-)
James Nestic	City Mayor Incident Commander	286-2203 (work) 286-2269 (home)
Rick Berns	Vice Mayor	286-2203 (work) 286-2232 (home)
Harold Christiansen	City Council	286-2203 (work) 286-2226 (home)
Al Cratty, Jr.	City Council	286-2203 (work)
George Gatter	City Council	286-2203 (work) 286-2264/2306
Carl Christiansen, Jr.	City Council	286-2203 (work) 286-2284 (home)
Alex Shugak	City Council	286-2203 (work) 286-2291 (home)
Jonetta Cratty	City Clerk	286-2203 (work) 286-2267 (home)
Russel Fox	City Treasurer	286-2203 (work)
Mark Haglin	Village Public Safety Officer Village Response Team	286-2270 (work)
Mike Dobbins	Volunteer Fire Chief Village Response Team	286-2293 (home)
Stella Krumrey	Community Health Practitioner Village Response Team	286-2205 (work) 286-2274 (home)
Zora Inga	Community Health Practitioner, EMT II, Village Response Team	
Bruce Green	Community Health Aide II, EMT I Village Response Team	286-2205 (clinic)
Angie Christiansen	Community Health Representative, ETT, Village Response Team	286-2258 (work)
Emily Capjohn	Community Member, ETT Village Response Team	286-2328 (home)

Organizing for Emergencies

Name	Title	Phone Number (907-)
Judy Dobbins	Community Member, EMT II Village Response Team	286-2293 (home)
Sabrina Chriastiansen	Community Member, EMT II Village Response Team	
Ralph Christiansen	Community Member Village Response Team	
Darlene Chriastiansen	Community Member Village Response Team	
Buddy Pestrikoff	Community Member Village Response Team	
John Ignatin	Community Member Village Response Team	
Tony Azuyak, Sr.	Old Harbor Tribal Council President	286-2215 (office)
Sven Haakenson, Sr.	Old Harbor Tribal Council Vice President	286-2215 (office)
Olga Pestrikoff	Old Harbor Tribal Council Secretary/Treasurer	286-2215 (office)
Leroy Gregory	Old Harbor Tribal Council Treasurer	286-2215 (office)
Tilly Christiansen	Old Harbor Tribal Council Clerk	286-2215 (office)

EMERGENCY OPERATIONS CENTER FACILITIES

The Emergency Operations Center (EOC) is a facility designated for managing disaster emergencies. The Incident Management Team use the EOC as their center of operations to direct the overall disaster emergency response.

The EOC centralizes incident management and also does the following:

- Provides a central point where all information pertaining to the incident is received and analyzed, incident priorities are determined, strategies are developed and critical resources are assigned to tactical operations.
- Provides a central location for planning meetings, tactics meetings, shift briefings, media briefings, press conferences, public information releases and other information dissemination.
- Facilitates efficient and effective communications.
- Enhances coordination between involved agencies by co-locating agency representatives in the EOC, providing for scheduled points of contact, and establishing effective lines of communication to facilitate this coordination.
- Sustains operations during extended periods of time by locating the incident management team in an EOC facility which minimizes disruptions of everyday functions within other organizations and agencies.
- Provides continuity using round-the-clock staffing and a systematic means to brief members of the IMT through shift briefings when shifts change.

Old Harbor EOC Locations

The following locations within the community of Old Harbor may serve as Emergency Operations Center, depending on the type and scale of emergency.

1. Fire Hall Training Room
2. City/Community Building
3. Clinic
4. Native Corporation Offices

Organizing for Emergencies

EOC Requirements

Facilities and equipment for the EOC should be pre-identified, procured, and available for immediate set-up. They should include the following:

- **OFFICE SPACE** ~ The EOC must have adequate office space to support the activities of the IMT.
- **LIGHTING** ~ The EOC must have adequate lighting for staff to carry out their duties. **An auxiliary power source is mandatory for the EOC**, either permanently hardwired for the facility or the ability to convert to an external power source in a minimum of time and disruption.
- **HEATING AND/OR COOLING** ~ Similar to adequate lighting with the same needs for auxiliary power and/or auxiliary sources of heat.
- **SECURITY** ~ The EOC must be easily secured against intrusion. Access to the EOC should be allowed to only authorized personnel and staff.
- **COMMUNICATIONS EQUIPMENT** ~ It is vital that the EOC have adequate communications equipment and that it is accessible to all personnel.
- **TELEPHONES** ~ Multiple handsets, incoming and outgoing lines, and switch-boards are required to handle the information flow of an incident. **A minimum of at least two phone lines should be provided.**
- **FAX MACHINES** ~ For transmittal of hard copy information. Ideally, two fax machines should be provided, one for outgoing one for incoming messages.
- **COMPUTERS** ~ Computer hardware with adequate data storage space, priority use, and support personnel for the management of incident information and data.
- **INCIDENT RADIOS** ~ Each section should have access to incident radios.
- **AMATEUR (HAM) RADIOS** ~ A suitable area should be provided for amateur (ham) radio operators. Required power sources, antennas, etc. must be supplied.
- **T.V.'S AND RADIOS** ~ Adequate numbers of T.V.'s and radios should be provided for in the EOC to monitor press releases, news media and gather incident information.
- **AREA SUITABLE FOR BRIEFINGS** ~ An area separate from the main EOC operations area where shift briefings, strategy meetings, news media briefings and other meetings can be held without adversely impact the EOC operations.

- **FOOD SERVICE** ~ An adequate area for serving and/or preparing food for the EOC staff. The EOC staff must be fed, and if possible meals should be provided in the facility. If this is not feasible, some means to feed staff outside the EOC must be arranged. At the very least, hot and cold beverages and snack food should be available at the EOC.
- **DRINKING WATER** ~ An adequate supply of drinking water should be on site, especially a back-up supply (e.g., bottled water) for use by personnel in the EOC.
- **TOILETS** ~ Adequate toilet facilities should be provided for the EOC staff. Consider portable facilities if building lifelines (water, sewer) are damaged or inoperable.
- **OFFICE SUPPLIES** ~ An adequate amount of office supplies and equipment such as tables and chairs to support the EOC staff need to be available. **See Checklist this Section.**
- **NOISE LEVEL IN EOC** ~ A relatively quiet work area is required for all functional areas to efficiently and effectively conduct business. All means should be taken to minimize noise disturbance in the EOC from equipment (e.g., generators, apparatus, machinery), media briefings, and congregations of people.
- **CROWDING** ~ Only those individuals required to perform IMT duties should be allowed in the EOC.

EOC Configuration

The layout of the EOC will be determined by several factors, including:

- Number of members of the Incident Management Team.
- Size, shape, and number of the room(s) available for the EOC.
- Location of the communications systems equipment to be utilized.
- Lessons learned from previous incidents.

General elements that should be considered when designing the layout of the EOC include the following:

- IMT functional sections (e.g., plans, logistics) should be positioned adjacent to displays that require their input and posted information that they manage.
- The Incident Commander should be located so that he/she can be easily informed at all times of the current status of the incident.
- IMT members whose functional responsibilities cause them to interact frequently, or have a need to coordinate together should be co-located.

Organizing for Emergencies

EOC Supplies Checklist

Use this checklist as a guide for setting up the EOC. Blanks may be checked to indicate the item has been completed and/or to list the number of items secured.

Infrastructure

_____	Auxiliary power
_____	Lighting
_____	Office Space
_____	Physical needs
_____	coffee
_____	restrooms
_____	food

General Office and Communications Equipment

_____	Telephones
_____	# of handsets
_____	# of lines
_____	Fax machine
_____	Copy Machine
_____	Computer terminal(s)
_____	Typewriters/word processors
_____	T.V.s
_____	VCR
_____	Radios
_____	Extension cords
_____	Tables
_____	Chairs
_____	Overhead with screen

Office Supplies and Miscellaneous

_____	Bulletin boards
_____	Display boards
_____	Maps
_____	Map Pens
_____	Clear plastic mylar
_____	Flip Chart easel
_____	Flipchart pads
_____	Large manila envelopes 12" x 16"
_____	Heavy duty staplers
_____	Standard desk top staples
_____	Paper clips

Office Supplies and Miscellaneous (cont.)

- _____ Staple puller
- _____ Push pins
- _____ 1" masking tape
- _____ Writing pads
- _____ Pencils
- _____ Pens; black and red ink
- _____ Assorted rubber bands
- _____ Scotch Tape
- _____ Standard file folders
- _____ Erasers
- _____ Post-it- pads,
 - _____ small
 - _____ medium
 - _____ large
- _____ Legal size writing pads
- _____ Legal size clipboards
- _____ Three hole punch
- _____ File folder labels
- _____ 2" x 3" blank labels
- _____ Telephone memo call pads
- _____ Dictionary
- _____ Erasable felt tip pens, assorted colors
- _____ Copy paper
- _____ Computer printer paper
- _____ Fax paper
- _____ Boxes for filing
- _____ ICS forms (from Kodiak EOP Volume 3, Sec. 11)
- _____ Other forms
- _____ Name tags

Organizing for Emergencies

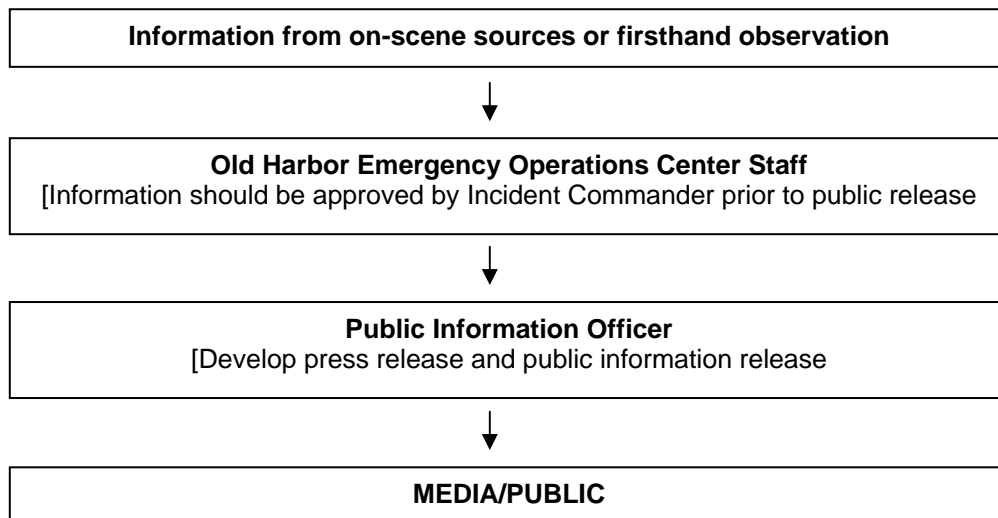
EOC OPERATIONS

Public Information Flow

During an emergency, it is important to quickly disseminate information in order to orchestrate an effective, community-wide response.

The timely and effective distribution of public information can enhance respect and understanding of local government, galvanize public support, and aid in response to emergencies.

The following flow of incident information should be observed whenever possible.



Public Information Officer

During a regional emergency which involves the activation of the Incident Management Team, a Public Information Officer (PIO) should be appointed to coordinate the dissemination of information about the incident. The Public Information Officer is responsible for the formulation and release of information about the incident to the public, the news media and other appropriate agencies and organizations.

Media Guidelines

Consider the following guidelines before releasing information to the media.

1. Provide accurate and consistent information. Release only those facts which can be confirmed. ***If little information is available, indicate this fact and schedule future briefings as information comes in.***
2. Release only approved, specific and verified information, such as:
 - Nature and extent of emergency occurrence.
 - Impacted or potentially affected areas of the community.
 - Advice on emergency safety procedures, if any.
 - Mitigation activities being conducted by responders.
 - Procedures for reporting emergency conditions to the EOC.
3. Control rumors. Correct any inaccurate information published by the media.
4. Do not release information which might hinder emergency response, prejudice the outcome of an investigation, or pose a further threat to public safety.
5. Do not allow media access to the EOC except under limited, controlled circumstances, and only with the prior approval of the Incident Commander.
6. Keep logs and, if possible, tape recordings of public information briefings, releases, interviews, and warnings.

EOC Communications

Effective emergency communications among on-scene responders, Incident Management Team staff, communication points, and the public is vital to the protection of life and property as well as efficient and effective incident management.

The method used to accomplish efficient and effective multi-jurisdictional incident management is in the use of a common communications plan with agreed-upon frequencies designated to various incident functions.

This communications plan will tie together the tactical and support units of the various agencies and organizations and maintain communications discipline.

All incident communications should be limited to essential information

Local Communications Equipment Resources

The City of Old Harbor has the following communications equipment:

Equipment	Location	Quantity
VHF Radio (fixed)	Fire Station - with repeater tower	1
VHF Radio (fixed)	Clinic	1
Citizen's Band (CB) Radio	private vehicles/vessels	variable
VHF Radio (Portable Handheld)	VRT members	approx. 12
Single Side Band (SSB)	none currently operating in community	

Local telephone service -- PTI Communications (800-478-3011 or 800-478-7121)

Long distance telephone service -- AT&T Alascom (800-252-7266)

Regional Communications Equipment Resources

Communications equipment within the community is relatively limited, but there is a moderate amount of communications equipment available in Kodiak, through various state and federal agencies, local organizations, and private vendors. These include the following:

- National Park Service (486-6730)
- Alaska Department of Environmental Conservation (907-244-8126)
- Alaska Department of Military and Veteran Affairs, Division of Emergency Services (907-427-7000)
- U.S. Coast Guard commands in Kodiak (487-5555)

Additionally, the Bureau of Land Management, Alaska Fire Service, maintains a fire warehouse in Fairbanks with a number of radio kits, as well as communications support technicians that can be utilized in the event of a declared disaster emergency.

All requests for Federal radio kits and support must go through the Division of Emergency Services.

Contact information for state and federal agencies is listed in Part C of this plan.

Organizing for Emergencies

Old Harbor Radio Frequencies

COMMON EMERGENCY CHANNELS (Kodiak Region)

- Citizen's Band (CB): CH 9
- Marine VHF Radio: CH 16
- Single Side Band (SSB): 4125 kHz

LOCALLY MONITORED FREQUENCIES

- VHF - Emergency/Hailing: CH 16
- VHF - Emergency/Hailing: CH 14

**KODIAK DISASTER EMERGENCY FREQUENCY
(Monitored at Kodiak Emergency Operations Center)**

155.955 MHz Simplex

SHELTER OPERATIONS

In certain types of disasters, it may be necessary to provide short or long term shelters for all or part of the local population. Depending upon the type of emergency and the facilities impacted, shelters may be set up in the community, or arrangements may be made to temporarily dislocate residents to adjacent communities for sheltering.

In Old Harbor, the school is the primary emergency shelter, except for tsunamis. The clinic is the designated tsunami shelter. The School Principal shall serve as the primary shelter manager, and will be responsible for opening the shelter and initiating services there. If the school year is out and the Principal is not in the community, the City Mayor will designate a shelter manager from the community.

Kodiak Island Borough School District, the American Red Cross, and the National Guard all have resources that may be called upon to support a local shelter. These resources include food, drinking water, cots and blankets, and organizational support. All of these organizations should be contacted once a shelter is established in Old Harbor, as they may be able to support long-term shelter operations.

If the school and/or tsunami shelter cannot be used for one reason or another (such as structural damage during an earthquake), it may be necessary to select an alternate shelter location. Other Old Harbor facilities that should be considered as potential shelters include:

- City/community building
- Fire Hall/Native Corporation offices

Access to shelter services shall not be denied on the basis of race, color, national origin, religion, sex, age or disability. The needs of special populations shall be identified and planned for accordingly.

Sheltering

Shelter Management and Integration with Volunteer Relief Organizations

The Kodiak Island Borough School District maintains primary responsibility for operating shelters in local public schools, including the Old Harbor school. The school district has worked cooperatively with the Alaska Chapter of the American Red Cross to coordinate sheltering and mass care resources in Kodiak communities.

The American Red Cross (486-4040) and The Salvation Army (486-8740) may provide supplemental shelter resources and food support for local residents during a disaster. The American Red Cross can also perform a variety of other valuable emergency services, including support and supplies for disaster victims and workers, and local government assistance.

The Salvation Army can mobilize personnel and resources from out of the region/state to provide immediate aid during the period of critical disruption following a disaster, which may include food, clothing, shelter, and other needs as indicated. Continuing care, in response to request for assistance is also provided.

The Old Harbor Shelter Manager should coordinate all efforts with the Kodiak Island Borough School District, the American Red Cross, and the National Guard. During an incident where sheltering needs are significant, the American Red Cross may step in to manage or operate a shelter under its own authority as a non-governmental "sheltering organization."

Household pets create substantial problems in evacuation areas and shelters during an emergency. Evacuated residents must be informed that pets will not be accepted at the shelter facilities.

Shelter Requirements

Before setting up a mass care shelter, attempts should be made to house families with relatives, friends, or other persons offering space. Since a shelter provides only a temporary means of caring for people, plans should be made to close the shelter as quickly as possible. Families are best able to recover from the effects of a disaster when they are in their own living quarters.

**EVERY SHELTER MUST HAVE SHELTER MANAGEMENT
COVERAGE ON A 24-HOUR BASIS**

To be effective as a shelter, a facility should:

- Be usable following a disaster.
- Be located outside of the risk area.
- Be located reasonably near victim's homes.
- Be an appropriate size. (If one shelter is sufficient, only one should be established.)
- Be safe and healthful.
- Have an adequate supply of drinking water.
- Have adequate toilet and bathing facilities.
- Have facilities for cooking, serving, and storing food.
- Have a storage area that can be secured.
- Have separate rooms that can be used for the elderly, for families with small children, and for nursing and office space.
- Have space that can be used as a recreation area.
- Have a parking area.
- Have adequate fire and police protection.

Sheltering

Services Provided at the Shelter

Food ~ Hot meals should be provided twice a day. A midday lunch should be provided for children, the aged, expectant and nursing mothers, laborers, and disaster victims doing heavy work. Menus should be planned in terms of foods available, with perishable foods and USDA foods being used first. USDA surplus foods are normally available at the schools and may be available in increased quantities to shelters subject to approval by the school district and/or the Red Cross.

Individual Assistance and Counseling ~ Shelters should provide help in solving disaster related problems such as the need for transportation and permanent housing. Village Response Team members or other community members with appropriate training should help with counseling needs.

Emergency Medical Services ~ Medical services should be provided to shelter occupants who become ill or injured. Medical personnel (CHA, CHR, and other EMT or ETT trained individuals) should provide guidance to protect the health of residents and supervise the sanitation of the shelter.

Sleeping ~ Occupants should be provided with cots or mats, blankets and a specified area for sleeping. Athletic mats may be used to improvise sleeping areas if no cots are available.

Child Care ~ If a shelter remains open for more than a few days, a child care facility should be considered.

Recreation Services ~ If shelter operations are prolonged and involve large numbers of people, shelters may provide recreation services to relieve tensions and improve morale. Appropriate recreation activities include movies, television, reading material, games, and crafts.

Shelter Maintenance ~ Provide for building maintenance and upkeep. The staff normally responsible for the facility may be available for this purpose. Shelter residents should be asked to assist.

Allocation of Space ~ Allocate space for the following purposes:

- Reception and registration of shelter occupants.
- Office space
- Medical care.
- Sleeping accommodations.
- Food service and feeding area.
- Storage areas (food, supplies, personal items)
- Restrooms and bathing facilities.
- Nursery and child care.
- Recreation

Shelter Reception and Registration

The Shelter Manager is responsible for ensuring that a simple record is kept of every person who is housed in the shelter. The following information on each family should be recorded on an index card:

- The last, first, and middle names of the head of household and spouse, and the wife's maiden name.
- Name and ages of all family members.
- Any health problems of family members.
- The family's pre-disaster address.
- The family's pre-disaster telephone number.
- The date the family arrived at the shelter.

When a family moves from a shelter, it should be so indicated on the registration cards, and the following information should be recorded:

- The date the family departs.
- Their post-disaster address.
- Their post-disaster telephone number.

It is important that people be registered as soon as they arrive in the shelter, or as soon as practicable.

Staffing the Shelter

Shelter staff in addition to the Shelter Manager may include:

Assistant manager	Nurse
Registration workers	Food preparation workers
Feeding staff	Family Service workers
Public Information Officer	Building maintenance and sanitation

The regular staff working in the building that is being used as a shelter (e.g. Faculty, as well as office, cafeteria, and especially maintenance staff), should be the primary resource for personnel to operate the shelter, as they have the most complete knowledge of the facility.

Shelter residents can and should do a large proportion of the work associated with shelter management, including administrative duties, cooking, cleaning, maintenance, child care, and other duties.

Sheltering

Shelter Planning Guidelines

Essential Shelter Needs

Equipment needed in a shelter includes cots and blankets, chairs, tables, drinking cups, hot plates for warming baby formula, brooms, trash cans, loudspeakers, emergency equipment such as candles, lanterns, flashlights, and generators, and a telephone.

Necessary shelter supplies include soap, towels, toilet tissue, disposable diapers, and cleaning items such as detergent and soap.

Office supplies needed include a telephone, carbon paper, disaster forms, cards, file folders, paper, paper clips, and pencils.

SERVICE REQUIRED	NATIONAL STANDARD	FOR 125 PEOPLE
Sleeping space	40 to 60 square feet per person	5,000 to 7,000 sq. ft.
Food	2,500 calories, or 3 1/2 pounds of food, per person per day	437.5 pounds of food per day
Potable water	5 gallons per person per day	625 gallons per day
Toilets and showers	1 per 40 persons	4
Comfort kits	1 per person	125
Blankets	2 per person	250
Cots	1 per person	125
Medical supplies	as needed	as needed
Battery-operated radios and flashlights	as needed	as needed
Batteries	as needed	as needed

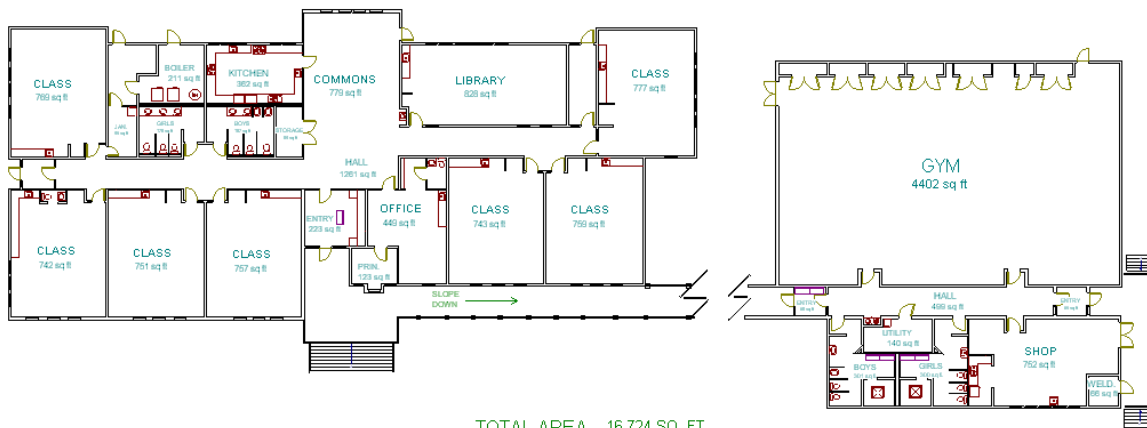
OLD HARBOR SCHOOL SHELTER PROFILE

Old Harbor School	286-2213
BUILDING USE:	K-12
YEAR BUILT:	1978
LAST REMODEL:	1989
GROSS SQUARE FEET:	16,724
NET INSTRUCTIONAL SPACE:	11,644
GYM:	4,402
LIBRARY:	828
COMMONS:	779
KITCHEN:	362
NUMBER OF TEACHING STATIONS:	11
NUMBER OF CLASSROOMS:	8
TOILETS ACCESSIBLE IN BLDG.:	YES
CONDITION OF BLDG.:	GOOD

OLD HARBOR SCHOOL



OLD HARBOR SCHOOL FLOOR PLAN



OLD HARBOR SCHOOL

TOTAL AREA 16,724 SQ. FT.
INST. AREA 11,644 SQ. FT.

Sheltering

(This page intentionally blank.)

CONCLUDING THE RESPONSE

Most of the post-incident activities described here should actually be initiated during the response phase of the incident. For the purpose of this discussion, post-incident activities include the following:

- Demobilization of the Emergency Operations Center
- Damage Assessment
- Post-Incident Evaluation/Review

DEMOBILIZATION

Demobilization is the process used to gradually cease response operations and release incident personnel and resources back to their non-emergency function. A demobilization plan should be developed to ensure that resources are released and tracked in an effective, logical manner. Consider the following guidelines in demobilizing the Old Harbor Emergency Operations Center:

- **Assign responsibility** for demobilization plan initiation and implementation by activity or IMT function.
- **Develop release priorities** for resources and equipment that were used during the response. Base these priorities on the following considerations:
 - Ongoing incident resource requirements and personnel needs
 - Current and projected resource/personnel needs for each IMT section
 - Contractor requirements that might influence release priorities (i.e. contractual terms, costs)?
 - Off-incident requirements or needs for incident resources?
 - Safety considerations and/or personnel rest issues?
 - Physical status of personnel and the mechanical condition of equipment.
 - Cost and transportation considerations.
- **Establish release procedures** for demobilizing equipment and personnel. Release procedures should identify check-out steps (may vary depending on kind of resource). Check-out steps may include:
 - Release of check-out notice.
 - Turn-in of any incident related documentation.
 - Turn-in of radios or other communications equipment.
 - Turn-in and inspection of all other equipment.
 - Turn-in of personnel and equipment time recordings, claims, contracts.

Post-Incident Actions

DAMAGE ASSESSMENT

Damage assessment is conducted in three phases: Initial Damage Assessment, Preliminary Damage Assessment, and Damage Survey Reports Development. This plan focuses on initial damage assessment, because this is the only part of the process handled primarily within the community. The initial assessment provides supporting information for the disaster declaration, and is the responsibility of the local government. The preliminary damage assessment and the damage survey reporting process are in-depth analysis of long term effects and costs of the emergency, and are done with the combined efforts of local, state, and federal agencies.

For more information on subsequent phases of damage assessment, including the development of damage recovery reports, refer to the appropriate section in the Kodiak Emergency Operations Plan.

Initial Damage Assessment

The initial damage assessment is a process that will require major assistance from all city departments and available volunteer resources. If the community can document actual costs spent on the response, these should be used to develop accurate cost estimates.

Record keeping, especially of expenditures, should be started very early in the incident.

The initial damage assessment should begin as soon as possible after the impact of the emergency. Each damaged facility should be analyzed for structural integrity and safety, functional capability, and estimated cost to repair or replace. The damage assessment should be conducted using the following priorities:

Priority 1 - Public safety and restoration of vital services

1. Public buildings
3. Clinic, school and other shelters.
4. Power, telephone, and radio communications systems.
5. Roads, airstrips, harbors, and other infrastructure.

Priority 2 - Assessment of damage to support emergency or major disaster declaration.

1. Private homes, multiple family dwellings.
2. Businesses.

Disaster Recovery Assistance for Local Citizens

Disaster Recovery Center (DRC)

A Disaster Recovery Center (DRC) may be created to assist local citizens in applying for state or federal disaster assistance. Appropriate facilities may include schools, churches, and community centers. Federal, state, local and volunteer agencies may provide or accept applications for the following services through the Disaster Recovery Center:

- Temporary housing
- Essential repairs to damaged homes.
- Disaster unemployment and job placement assistance
- Disaster loans
- Agricultural assistance payments and technical assistance
- Information on the availability of food stamps and eligibility requirements.
- Individual and family grants to meet disaster related expenses
- Legal counseling
- Tax counseling.
- Consumer counseling.
- Crisis counseling.
- Social Security assistance.
- Veteran's assistance.
- Other specific programs and services as appropriate to the disaster.

POST-INCIDENT EVALUATION

Each time the Old Harbor Incident Management Team and Emergency Operations Center are exercised, either in a real emergency or during a planned drill, it is important that all participants take the opportunity to learn from the experience of managing an emergency incident.

A post-incident evaluation or "debrief" is a tool that can facilitate this process, by allowing incident personnel to reflect briefly on the lessons learned during an emergency response. Consider the following questions in conducting a post-incident evaluation.

- Did Incident Management Team personnel integrate effectively to respond to the incident at hand?
- Were staffing levels adequate?
- Did the EOC space function adequately?
- What were the most successfully elements of the incident response?
- What were the major problems?
- What specific actions were taken to improve the effectiveness of the response?
- How did communications flow within the EOC?
- Were all personnel comfortable/familiar with their expected roles and responsibilities?
- How did Old Harbor IMT personnel integrate with other agencies/organizations?
- Was the information in this plan useful in guiding the response? How might you revise the plan based on this experience?
- Was there adequate resource information/telephone numbers in the plan?
- Did external notifications occur quickly and effectively?
- Was the alert/siren system effective?
- Did evacuation occur smoothly?
- Was the shelter facility adequate?
- What were the major "lessons" learned?
- What would you do differently next time?
- What would you do the same?

Keep records of the post-incident evaluations developed and insert copies into this plan to jog memories during future incidents or drills.

LOCAL AGENCIES AND RESOURCES

This section contains general agency resource information for emergency services, law enforcement, and medical services in Old Harbor and the Kodiak region. Many of the organizations, teams, and individuals that provide these services community-wide overlap. Resource information in this plan includes both equipment and personnel, and is presented here to provide an at-a-glance reference for the community resources available to support response activities in Old Harbor.

HEALTH & EMERGENCY MEDICAL SERVICES

Health and Medical Services includes those activities associated with lifesaving; transport, evacuation, and treatment of the injured; disposition of the dead; and disease control activities during response operations and recovery operations.

Health and Medical Services in Old Harbor are managed by several individuals and organizations, including a clinic which is staffed by a Community Health Aide and Community Health Representative. There are no doctors or registered nurses in Old Harbor, therefore most health care is provided by EMT or ETT trained personnel who are supported by doctors from the Kodiak Area Native Association. Seriously injured or ill patients are medically evacuated from the community for treatment at a larger hospital facility in Kodiak or Anchorage.

OLD HARBOR CLINIC

P.O. Box 72 Old Harbor, AK 99643
907-286-2205 907-286-2255 (fax)

DESCRIPTION: The Old Harbor Clinic provides basic health care and emergency medical services to the community. The clinic is staffed by a Community Health Aide II and Community Health Representative, and supported by the Old Harbor Village Response Team network of trained medical responders.

Old Harbor has a working ambulance outfitted with first aid and emergency medical equipment, including oxygen and a defibrillator. The clinic is stocked with a diverse collection of medical equipment and supplies and can handle initial medical response to almost any kind of emergency. The CHA is currently EMT trained.

Multiple casualties would quickly exhaust the Old Harbor clinic resources, and in such an instance emergency medical evacuation or additional medical support from outside the community would be necessary. In the event that medical evacuation is necessary, the CHA or CHR would contact KANA or the Kodiak Hospital (PKIMC) to request a flight.

Old Harbor Resources

COMMUNITY HEALTH AIDE (CHA)

907-286-2205 (clinic)

DESCRIPTION: The Community Health Aide provides health care delivery at the local level in the community of Old Harbor. The CHA runs the Old Harbor clinic, and also provides the following services:

- Acute and emergency care.
- Health screening.
- Coordination of preventative dental program.
- Complete routine health testing.
- Family planning counseling and patient education/screening.
- Monitoring of chronically ill patients.
- Making home visits as necessary.
- Ordering medication refills in coordination with KANA pharmacy.

The CHA is employed through KANA and under the direct supervision of the CHA/P Manager at KANA.

COMMUNITY HEALTH REPRESENTATIVE (CHR)

Angie Christiansen

907-286-2205 (clinic)

907-286-2296 (home)

DESCRIPTION: The Community Health Representative (CHR) is responsible for providing a comprehensive health promotion/disease prevention program with emphasis on substance abuse, mental health, geriatrics, nutrition, chronic disease prevention, environmental health, crisis response and management, dental hygiene and general consumer health issues. The CHR also does the following:

- Provides individual services.
- Provides individual/family referrals.
- Perform client advocacy.
- Assist with application processes.
- Provide assistance to the elderly.
- Develop counseling skills services.

The CHR is employed through KANA and under the direct supervision of the KANA Outreach Services Coordinator.

VILLAGE RESPONSE TEAM (VRT)

**P.O. Box 72 Old Harbor, AK 99643
907-286-2205 907-286-2255 (fax)**

DESCRIPTION: In addition to clinic services, the community of Old Harbor has a Village Response Team (VRT), which is a community-based crisis intervention and treatment group that focuses on the integration and coordination of current staff and community agencies to provide broad-based health services. The village-based VRT works with various providers, both in the village and in Kodiak, to create and enhance community response by identifying community needs and utilizing available resources to meet them. Village Response Teams are trained to respond to the following types of situations.

- Law Enforcement (Assault/Physical abuse)
- Community Disaster Response
- Medical and Psychiatric Emergencies
- Domestic/Family Violence
- Acquiring BIA Burial Assistance
- Alcohol/Drug/Inhalant Abuse
- Suicides
- Critical Incident Stress Debriefing

The VRT is composed of the following Core Members: Village Public Safety Officer (VPSO); Community Health Aide/Practitioner (CHA/P); Community Health Representative (CHR); Rural Mental Health Provider (RMHP) Trainee. VRT Core Members are the first responders in a crises or emergency situation. They function as KANA employees and must comply with all applicable KANA policies and procedures.

The VRT also includes community members who request or are asked to become a member of the VRT. Community members are elected to the VRT by a unanimous vote of the team. The membership of the Old Harbor VRT is described below.

Position	Name	Phone
Village Public Safety Officer (VPSO) - Core Member	Mark Haglin	286-2295
Community Health Representative (CHR) - Core Member, ETT	Angie Christiansen	286-2258 (office)
Fire Chief Core Member	Mike Dobbins	286-2293 (home)
Community Member	Carl Christiansen, Jr.	286-2296 (home)
Community Health Practitioner (CHP)	Stella Krumrey	286-2205 (work) 286-2274 (home)
Community Health Aide (CHA II) , EMT I	Bruce Green	
Community Member, ETT	Emily Capjohn	286-2328 (home)
Community Member, EMT II	Judy Dobbins	286-2293 (home)

Position	Name	Phone
-----------------	-------------	--------------

Old Harbor Resources

Community Member, EMT II	Sabrina Chriastiansen	
Community Member	Darlene Chriastiansen	
Community Member	Ralph Chriastiansen	
Community Member	Buddy Pestrikoff	
Community Member	John Ignatin	

LAW ENFORCEMENT AND EMERGENCY RESPONSE RESOURCES

Law enforcement and emergency response resources are limited in Old Harbor. The two entities with primary responsibility for emergency response and law enforcement are:

- Village Public Safety Officer (VPSO)
- Volunteer Fire Department

In most situations, the VPSO and/or the Volunteer Fire Department will work cooperatively with the Village Response Team, Alaska State Troopers, and other local/regional organizations to coordinate an emergency response.

VILLAGE PUBLIC SAFETY OFFICER (VPSO)

Mark Haglin
Emergency – Dial 911
Phone -- 907-286-2295

DESCRIPTION: The Village Public Safety Officer (VPSO) provides a wide range of public safety services, including:

- Enforcement of State and Federal laws.
- Enforcement of City/Tribal ordinances.
- Assisting other State, Federal, and local agencies (as appropriate).
- Overseeing/developing fire protection and prevention.
- Coordination of search and rescue.
- Coordination of public safety during local disasters.
- Providing basic First Aid assistance only when other licensed medical professional care is immediately unavailable.
- Assisting Community Health Aide and/or Community Health Representative as necessary.
- Patrol buildings and roads.
- Coordinate community service work with Kodiak Court system and the Alcohol Safety Action Program.
- Work with KANA Alcohol Counselor(s).

The VPSO works under the direct supervision of the village City Council, in cooperation with the Alaska State Troopers. VPSOs are employed through and supervised by the KANA Tribal Operations department.

Old Harbor Community Emergency Response Plan

OLD HARBOR VOLUNTEER FIRE DEPARTMENT

Mike Dobbins, Fire Chief
(907) 286-2293 (home)

DESCRIPTION: The Old Harbor Volunteer Fire Department consists of a Fire Chief and several trained volunteers. The Fire Department has a 500-gallon fire truck, hoses, pumps, and miscellaneous firefighting gear. The fire truck and the ambulance are housed in a Fire Hall, which also has a small training room/command post.

A major fire would require supplementary personnel and equipment from either Kodiak Area Fire and Rescue or the Alaska Department of Natural Resources Forestry Division in Kenai. Most search and rescue in Old Harbor would be performed by either the Alaska State Troopers (land based) or the U.S. Coast Guard (marine), with local assistance.

REGIONAL AGENCIES AND RESOURCES

KODIAK AREA NATIVE ASSOCIATION (KANA)

3449 Rezanof Drive East Kodiak, AK 99615
Phone -- 486-9870 or 800-478-5721

DESCRIPTION: The Kodiak Area Native Association (KANA) provides health and social services support to the remote native villages and communities within Kodiak Island Borough. KANA employs community health care and mental health providers in each community, and provides support to those positions through the KANA medical and dental clinic in Kodiak. These clinics provide health care and outpatient services for Alaska natives throughout Kodiak.

The KANA clinic operates during normal business hours (Monday through Friday), with four MDs, three nurses and two physician assistants on staff. The clinic provides no specialty care or inpatient services, however they do provide medical support (via phone) to Old Harbor as well as the other five rural native communities in Kodiak Island Borough. KANA also oversees the Village Response Team program described above.

KODIAK VILLAGE SERVICES NETWORK (KVSN)

Contact through KANA 907-486-9800

DESCRIPTION: The Kodiak Village Service Network (KVSN) was formed to provide a link to the villages to meet the community needs in each village. The KVSN consists of a group of service providers representing their respective agencies, which include:

- Alaska State Troopers
- Kodiak Council on Alcoholism (Safe Harbor)
- Kodiak Public Health
- Kodiak Womens Resource and Crisis Center
- Providence Kodiak Island Mental Health Center
- State of Alaska Division of Family and Youth Services (DFYS)
- Kodiak Island Borough School District
- Kodiak Tribal Council
- State of Alaska Division of Juvenile Probation
- Kodiak Area Native Association

The purpose of the KVSN is to promote quality care for the mutually shared clients of the agencies listed above. The multi-disciplinary team addresses topical issues for the purpose of:

- Enhancement of service coordination.
- Facilitating referral services.
- Becoming more knowledgeable regarding available resources.

ALASKA STATE TROOPERS “C” DETACHMENT

Kodiak Post
211 Bartel Ave. Kodiak, AK 99615
Emergency Dial 911
Phone – 486-4121

DESCRIPTION: The Alaska State Troopers “C” Detachment is a division of the Department of Public Safety. The Kodiak Post handles all State of Alaska law enforcement (non-fish and wildlife) in the Kodiak Island Borough, and is the only municipal police force beyond the City of Kodiak limits.

The State Troopers supervise the Village Public Safety Officers as they provide basic law enforcement services in the remote communities in Kodiak Island Borough. The Kodiak Post is led by a Post Commander (Sergeant), who oversees a staff of approximately six troopers and three civilian dispatchers.

All troopers have first responder first aid training. The Kodiak Post Commander is the search and rescue coordinator for all land searches in Kodiak Island Borough. The Kodiak Post currently leads the AST dive team, which has members from both the "C" Detachment and the Fish and Wildlife Protection Division. The Kodiak Post Commander reports to an AST Lieutenant in Anchorage and holds a seat on the Kodiak Emergency Services Council as a liaison to the villages and outlying communities.

Old Harbor Resources

SUMMARY OF COMMUNITY RESOURCES AND CAPABILITIES

MEDICAL RESOURCES

Resource/ Capability	City of Old Harbor	Old Harbor Clinic	Old Harbor VPSO	Old Harbor VRT	Old Harbor Fire Dept.
EMT/ETT Trained Personnel	YES	YES	YES	YES	YES
Oxygen equipment		YES			YES (ambulance)
Patient Beds					
24 hour care?					
Anesthesia					
Jump kits for emergency					
I.V. materials					
EMS equipment					
Trauma Kit					
ALS/BLS?					
X-Ray					
Lab Equipment					
Drugs					
Ambulance					YES
Ventilators					
Defibrillator		YES			
Mass casualty supplies					

COMMUNICATIONS RESOURCES

VHF radios	YES	YES	YES	YES	YES
CB radio					
SSB radio					

EQUIPMENT RESOURCES

Resource/ Capability	City of Old Harbor	Old Harbor Clinic	Old Harbor VPSO	Old Harbor VRT	Old Harbor Fire Dept.
Vehicles	2-3		1	personal	Truck & ambulance
Trucks	Ford F-450 pickup truck with fuel tank/garbage collection beds				
Backhoe	1				
Road Grader	1				
Crane/Forklift	1				
Fire Truck					1
Fire Equipment					YES
Detention Area?			NO formal detention area		
Construction Equipment	Yes, various				
Vessels					
Aircraft					
Portable generators	3	1			
Food Supplies	at school	emergency rations (limited)			

Old Harbor Resources

PRIVATE/VOLUNTEER AGENCIES

Social Services, Counseling, And Mental Health Services

NAME	PHONE (907-)	SERVICES
American Red Cross Kodiak Office	486-4040	Disaster relief, sheltering, social services
American Red Cross Coast Guard Base	487-5200	Disaster relief, sheltering, social services
Hope Cottages, Inc. (Respite Care)	486-5011 486-7021 486-6100	Child and family social services, respite care
Kodiak Area Native Association (KANA)	486-9800 486-5958	WIC program, infant learning, social services, mental health care for Kodiak Native community
Providence Kodiak Island Mental Health Center	486-9100	Marriage, Family, Child & Individual Counseling & Mental Health Services
Kodiak Senior Center	486-6181	Senior Services, Adult Day Care, Meals and social programs.
Kodiak Women's Resource & Crisis Center (24-hr crisis line)	486-6171 486-3625	Sheltering and social services for abused women/children; meals, outreach program
WIC Kodiak	486-5958	Federal program to assist women and children in need.
Providence Kodiak Island Community Support Center	486-9140	Community Support Program

Translators and Interpreters

Providence/Kodiak Island Medical Center maintains an updated list of foreign-language translators and interpreters. For information on interpreters/translators, contact the Medical Center directly at 486-3050 or 486-3281.

The following pages contain telephone and facsimile numbers for local, state and federal agencies and private organizations with a potential role in emergency response. This information is included to facilitate contact with and notification of key agency personnel in the event of a natural or manmade disaster. It will NOT be necessary to contact every agency listed for every incident.

Old Harbor Agencies and Organizations

DEPARTMENT	PHONE (907)-	FAX (907)-
City Mayor/Clerk.....	286-2204	286-2278
Old Harbor School.....	286-2213	
Community Health Aide.	286-2276/2290	
Community Health Representative	286-2258/2229	
Clinic	286-2205	286-2255
Fire Chief	286-22??	286-22??
VPSO	286-2295	286-2278
Old Harbor Tribal Council.....	286-2215	286-2278

Kodiak Regional Agencies and Organizations

KODIAK ISLAND BOROUGH

DEPARTMENT	PHONE (907)-	FAX (907)-
Assessing.....	486-9353	486-9395
Clerk & Assembly.....	486-9310	486-9391
Mayor	486-9301	486-9374
Community Development (Planning)	486-9363	486-9376
Engineering/Facilities.....	486-9343	486-9376
Baler/Landfill	486-9345	486-9346
Finance.....	486-9323	486-9374
Fire Departments		
Bayside Volunteer Fire Dept.	486-4536	486-3025
Womens Bay Volunteer Fire Dept.	487-4312	
Land Resource Manager.....	486-9302	486-9376

Telephone Directory

KODIAK ISLAND BOROUGH (cont.)

DEPARTMENT	PHONE (907)-	FAX (907)
Kodiak Island Borough School Dept.		
Superintendent/Central Office.....	486-9210	
Assistant Superintendent.....	486-9228	
Maintenance and Operations.....	486-9222	
Business Manager	486-9278	
Village Schools Regional Principal	486-9233	
Akhiok School	836-2223	
Big Sandy Lake School.....	381-2033	
Chiniak School	486-8323	
Danger Bay School	379-1125	
Karluk School.....	241-2217	
Larsen Bay School.....	847-2252	
Old Harbor School	286-2213	
Ouzinkie School.....	680-2204	
Port Lions School.....	454-2237	

CITY OF KODIAK

DEPARTMENT	PHONE (907)-	FAX (907)-
Animal Shelter.....	486-8077	
Mayor and City Council.....	486-8635	486-8600
City Manger/Emergency Services Director	486-8640	486-8600
City Clerk	486-8636	486-8600
Finance	486-8650	486-8600
Fire Dept. (Emergency = 911).....	486-8040	486-8048
Police Dept. (Emergency = 911).....	486-8000	486-8023
Harbor Operations.....	486-8080	486-8090
Public Library	486-8686	486-8681
Public Works Dept.....	486-8060	486-8066
Wastewater Treatment Plant	486-8076	486-8066
Parks and Recreation Dept.....	486-8665	486-8674
Engineering	486-8065	486-8066

OTHER KODIAK COMMUNITIES

COMMUNITY	PHONE (907)-	FAX (907)-
City of Ahkiok		
Clerk/Tribal Office	836-2229	836-2209
Clinic/Community Health Rep.....	836-2230	
School	836-2223	
VPSO	836-2205	
Alavena Village (Afognak).....	486-8318	
Alitak Bay – Ward’s Cove Packing.....	371-2001	
Ben Thomas Logging.....	379-9002	
Big Sandy Lake/Kazakof Bay Logging Camp	381-2000	
Chiniak		
Public Library	486-3022	
School	486-8323	
Karluk		
Tribal Council	241-2218	241-2208
School	241-2217	
Community Health Rep.....	241-2209	
Kitoi Bay Hatchery.....	486-6559	
City of Larsen Bay		
Clerk.....	847-2211	847-2239
Community Health Representative	847-2259/2207	847-2307
Fire Chief.....	847-2205	847-2239
VPSO	847-2262	847-2239
City of Ouzinkie		
Clerk.....	680-2242	680-2223
Community Health Rep./Clinic.....	680-2265	
VPSO	680-2291	
Port Bailey Cannery	206-323-3200	
City of Port Lions		
Clerk.....	454-2332	454-2420
Community Health Rep./Clinic.....	454-2275	
VPSO	454-2330	
Uganik Bay/Port O’Brien Cannery	776-8174	
Whitestone Logging (Afognak).....	486-5126	

Telephone Directory

REGIONAL VOLUNTEER GROUPS & MISCELLANEOUS

AGENCY/ORGANIZATION	PHONE (907)-	FAX (907)-
Brother Francis Shelter	486-5610	
Civil Air Patrol, Kodiak.....	486-4060	
Kodiak Chamber of Commerce.....	486-5557	
Kodiak Island Convention and Visitors Bureau.....	486-4782	
Kodiak Amateur Radio Emergency Services.....	486-5833	
Kodiak Ministerial Alliance	486-3632 or 486-3458 or 486-5532	
Kodiak Senior Center	486-6181	
Providence Kodiak Island Medical Center (hospital)	486-3281/9595	
Providence Kodiak Island Mental Health Center	486-9100	
The Salvation Army.....	486-8740	
American Red Cross, Kodiak Office	486-4040	486-4754

Alaska State Agencies

AGENCY/ORGANIZATION	PHONE (907)-	FAX (907)-
Alaska Dept. of Community and Regional Affairs (DCRA)	486-9375	
Alaska Dept. of Environmental Conservation (ADEC).....	269-3063	269-7648
24-hour oil/hazardous substance release.....	800-478-9300	
Central Alaska Response Team Duty Officer.....	244-8126	
Alaska Dept. of Fish and Game (ADF&G), Kodiak	486-1825	486-1841
Alaska Dept. of Health and Social Services		
Family Services	486-6174	
Public Health Center	486-3319	
Div. of Public Assistance.....	486-3783	
Alaska Dept. of Labor.....	486-3105	
Alaska Dept. of Transportation and Public Facilities (DOT/PF)		
Airport and Highway Maintenance.....	487-4952	
Alaska Marine Highway System	486-3800	
Division of Building Maintenance.....	487-2611	
Equipment Section and Fleet Mechanic	487-2119	
Kalsin Bay	486-8243	

Alaska State Agencies (cont.)

AGENCY/ORGANIZATION	PHONE (907)-	FAX (907)
Alaska Department of Military and Veteran Affairs		
Division of Emergency Services (ADES)	428-7000	428-7009
24-hour	800-478-2337	428-7009
Alaska Army National Guard Armory	486-3433	
Alaska DNR, Div. of Forestry, Kenai/Kodiak Area	262-4124	260-4263
Alaska DNR, Div. of Parks, Kodiak Office.....	486-6339	486-3320
Alaska Department of Public Safety		
Alaska State Troopers, "C" Detachment.....	486-4121	486-5810
Fish and Wildlife Protection	486-4761	486-5810
Alaska Tsunami Warning Center (Palmer)	745-4212	

Federal Agencies

AGENCY/ORGANIZATION	PHONE (907)-	FAX (907)-
Department of Commerce		
National Oceanic and Atmospheric Administration		
National Marine Fisheries Service		
Fisheries Management Division.....	486-6919	
Enforcement Office	486-3298	
Scientific Support Coordinator (Anchorage)	271-3593	271-3139
Department of the Interior		
Fish & Wildlife Service		
Kodiak National Wildlife Refuge.....	487-2600	487-2144
Katmai National Park & Preserve	486-6730	486-3331
Department of Transportation		
FAA Contract Tower, Kodiak	487-4382/4339	
U.S. Coast Guard ISC Kodiak		
Commanding Officer	487-5760	487-5546
Integrated Support Command Directory	487-5320	
Marine Safety Detachment Office.....	487-5750	487-5585
Search and Rescue Emergency	486-5918	
Air Station.....	487-5836	487-5033
Communications Station.....	487-5217	

Telephone Directory

Federal Agencies (cont.)

AGENCY/ORGANIZATION	PHONE (907)-	FAX (907)-
U.S. Coast Guard Vessels:		
Cutter Firebush	487-5830	487-5541
Cutter Ironwood.....	487-5344	
Cutter Storis	487-5166	487-5535
U.S.C.G. National Pollution Funds Center.....	703-235-4757	703-235-4840
Environmental Protection Agency (EPA), Anchorage.....	271-5083	271-3424
Federal Emergency Management Agency (FEMA), Region X ...	800-395-6042	206-487-4741
Forest Service (Anchorage)	271-3593	271-3139
National Weather Service (Alaska Weather Line)	800-472-0391	
U.S. Geologic Survey		
Alaska Volcano Observatory, Anchorage	786-7497	
National Response Center (oil or hazardous substance spill)	800-424-8802	

Regional Private Organizations

AIRPLANE CHARTERS AND RENTALS

CARRIER and LOCATION	PHONE (907)-
Alaska Helicopters, Kodiak	487-2271
Alaska Airlines, Anchorage	243-3300
Andrew Airways, Kodiak	487-2566
Cub Air, Kodiak	486-5851
ERA Aviation, Kodiak	487-2663
Highline Air, Kodiak.....	486-5155
Island Air Services, Kodiak	486-6196
Kodiak Air Services, Kodiak	486-4446
Lynden Air Cargo, Anchorage.....	243-6150
Pen Air, Kodiak	487-4014
Sea Hawk Air, Inc., Kodiak	486-8282
Uyak Air Service, Inc., Kodiak.....	486-3407
Northern Air Cargo, Kodiak.....	487-4926

MEDIA

NAME	PHONE (907)-	FAX (907)-
Kodiak Daily Mirror.....	486-3227	486-3088
KVOK-AM 560/KRXX FM 101.1	486-5159	486-3044
KMXT-FM (Public Radio)	486-3181	486-2733
Kodiak Public Television (Channel 9)	496-3182	486-2733

REGIONAL NATIVE ORGANIZATIONS

ORGANIZATION	PHONE (907)-	FAX (907)-
Afognak Native Corporation.....	486-6014	486-2514
Akhiok Kaguyak, Inc.....	338-2322	337-2770
Akhiok Tribal Council	836-2229	836-2209
Anton Larson, Inc.	486-3886	
Ayakulik, Inc.	486-4349	486-3325
Karluk IRA Council	241-2218	241-2208
Kodiak Area Native Association (KANA).....	486-9800	486-9898
Kodiak Tribal Council	486-4449	
Koniag, Inc.	561-2668	562-5258
Larsen Bay Tribal Council	837-2207	847-2307
Lesnoi, Inc.	279-6034	
Natives of Kodiak	486-3606/4863	486-2745
Old Harbor Native Corporation	286-2286	286-2287
Old Harbor Village Council.....	286-2215	286-2277
Ouzinkie Tribal Council	680-2259	680-2214
Port Lions Traditional Council	454-2234	454-2434

Telephone Directory

Regional Fisheries Organizations And Environmental Groups

ORGANIZATION	PHONE (907)-	FAX (907)-
Alaska Dragger's Association	486-3910	486-6292
Alaska Groundfish Data Bank.....	486-3033	486-3461
Alaska Marine Conservation Council.....	277-5357	
Kodiak Community Conservation Network	486-4684	486-7651
Kodiak Regional Aquaculture Association	486-6555	486-4105
Kodiak Seafood Processors Association	486-6385	486-6592
Kodiak Seiner's Association.....	486-4686	486-7655
Kodiak Vessel Owners Association	486-3781	486-2470
Kodiak Audubon Society	486-2685	
Kodiak Fishermen's Wives Association	486-5238	
Northwest Setnetters.....	486-6834	486-8803
South End Setnetters.....	486-8229	
United Fishermen's Marketing Association.....	486-3453	486-8362
United Seiner's Association	486-4686	486-7655
Women's Fisheries Network	486-3638	