

152°35'W 152°34'W 152°33'W 152°32'W

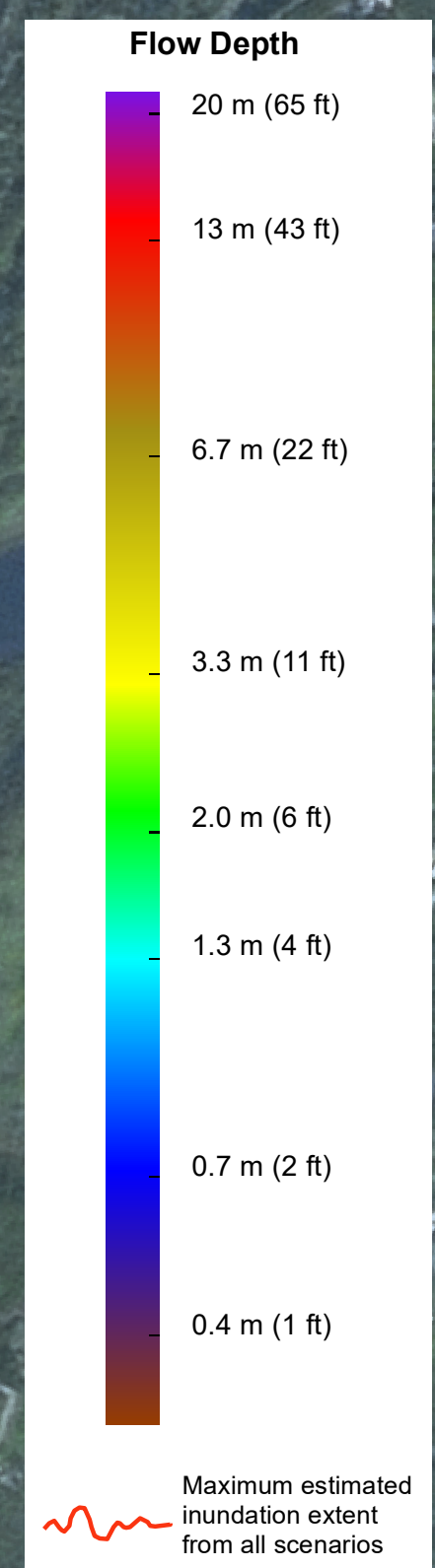
**State of Alaska**  
Department of Natural Resources  
**DIVISION OF GEOLOGICAL & GEOPHYSICAL SURVEYS**

*The State of Alaska makes no express or implied warranties (including warranties for merchantability and fitness) with respect to the character, functions, or capabilities of the electronic data or products or their appropriateness for any user's purposes. In no event will the State of Alaska be liable for any incidental, indirect, special, consequential, or other damages suffered by the user or any other person or entity whether from the use of the electronic services or products, or any failure thereof or otherwise. In no event will the State of Alaska's liability to the Requestor or anyone else exceed the fee paid for the electronic service or product.*

Publications produced by the Division of Geological & Geophysical Surveys (DGGS) are available for free download from the DGGS website ([www.dggs.alaska.gov](http://www.dggs.alaska.gov)). Publications on hard-copy or digital media can be examined or purchased in the Fairbanks office:

**ALASKA DIVISION OF GEOLOGICAL & GEOPHYSICAL SURVEYS**  
3354 College Road • Fairbanks, Alaska 99709-3707  
Phone 907-451-5010 • Fax 907-451-5050  
email: [dggspubs@alaska.gov](mailto:dggspubs@alaska.gov)  
website: [dggs.alaska.gov](http://dggs.alaska.gov)

**Womens Bay**

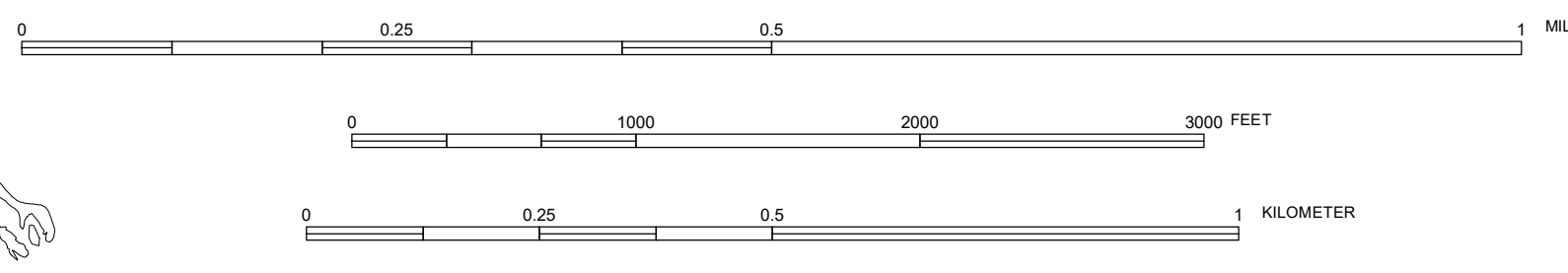
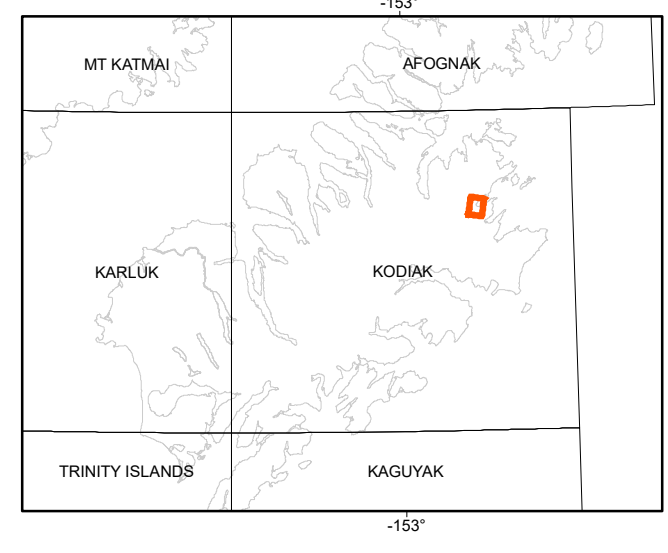


**Womens Bay**

**MAXIMUM ESTIMATED TSUNAMI INUNDATION, WOMENS BAY, ALASKA**

by E.N. Suleimani<sup>1</sup>, D.J. Nicolsky<sup>1</sup>, and R.D. Koehler<sup>2</sup>

2017



SCALE 1:8000

This map has been completed using the best information available and is believed to be accurate; however, its preparation required many assumptions. Actual ground subsidence during a tsunamigenic earthquake may vary from those assumed, so the accuracy cannot be guaranteed. Areas permanently flooded will depend on specifics of the earthquake and local ground compaction, and may differ from the areas shown on the map. Information on this map is intended to permit state and local agencies to plan post-tsunami response actions. The map is not appropriate for site-specific use or for land-use regulation. Interpretation of the map(s) by qualified experts is strongly recommended.

**Affiliation:**  
<sup>1</sup> Alaska Earthquake Center, Geophysical Institute, University of Alaska Fairbanks, PO Box 757320, Fairbanks, AK 99775-7320  
<sup>2</sup> Alaska Division of Geological & Geophysical Surveys, 3354 College Rd, Fairbanks, Alaska 99709-3707; R.D. Koehler now at Nevada Bureau of Mines and Geology, Mackay School of Earth Science and Engineering, University of Nevada, Reno, 1664 North Virginia St, MS 178, Reno, NV 89557

57°43'00"N

57°42'00"N

57°40'00"N