



Addendum No. 1

WWTP Centrifuge Installation

City of Kodiak Project PN 17-03/7519
Issue Date May 22, 2017

To All Planholders and/or Prospective Bidders:

The following changes, additions, and/or deletions are hereby made a part of the Bidding Requirements and Contract Documents for the construction of WWTP Centrifuge Installation dated May 2017 as fully and completely as if the same were fully set forth therein:

A. PART 1, PROCUREMENT REQUIREMENTS

No changes.

B. PART 2, CONTRACTING REQUIREMENTS

1. AGREEMENT, Section 3. Contract Times and Liquidated Damages, B.

DELETE the last line and SUBSTITUTE in its place the following:

“in Supplementary Conditions, Section 00 73 00, Article 14.08, paragraph B.”

C. PART 3, SPECIFICATIONS

1. SECTION 01 31 13, PROJECT COORDINATION

DELETE Paragraph 1.05.E.2. in its entirety and SUBSTITUTE in its place the following two paragraphs:

“2.a. No Work will be allowed on the second floor in the Belt Filter Press and Centrifuge Location areas on all Mondays and Tuesdays for the duration of the project. This is to allow City plant operations staff time and space to process WWTP sewage sludge each week. Schedule all Work and shutdowns to accommodate this schedule restriction.

b. No Work will be allowed on any Monday or Tuesday for the duration of the project that takes an existing sludge pump and motor and its connecting piping out of service or to install a new sludge pump and motor and its connecting piping. This is due to scheduled sludge pump operations on those days. Schedule all Work and shutdowns to accommodate this schedule restriction. Other Work on the first floor will not have schedule restrictions. At least one sludge pump, either P-TB-GTS 2 or P-TB-GTS 3, must be fully operational at all times.

2. SECTION 40 90 01, INSTRUMENTATION AND CONTROL FOR PROCESS SYSTEMS

DELETE 3.04, MANUFACTURER'S SERVICE, Paragraph A. Centrifuge Equipment.

DELETE 3.05, TRAINING, Paragraphs A. General., B. Operations and Maintenance Training, C. Operations Training, and D. Maintenance Training.

D, PART 4, DRAWINGS

1. Drawing G-1, DRAWING INDEX

a) CHANGE the title of DRAWING S-2 to: "TREATMENT BUILDING PARTIAL SECOND FLOOR PLAN AND SECTION".

b) CHANGE the title of DRAWING ED-1 to: "TREATMENT BUILDING FIRST FLOOR EQUIPMENT PLANT – DEMO".

c) CHANGE the title of DRAWING E-2 to: "TREATMENT BUILDING FIRST FLOOR EQUIPMENT PLAN".

d) CHANGE the title of DRAWING E-3 to: "TREATMENT BUILDING SECOND FLOOR EQUIPMENT PLAN".

2. DRAWING S-2: a) CHANGE the title to: "TREATMENT BUILDING PARTIAL SECOND FLOOR PLAN AND SECTION".

b) CHANGE the partial plan title to: "PARTIAL PLAN – SECOND FLOOR CENTRIFUGE AREA".

3. DRAWING P-3: CHANGE the bottom left-hand floor plan designation to: "SECOND FLOOR PLAN".

4. DRAWING P-4: REPLACE the Bid set issued Drawing P-4 with the ATTACHED revised Drawing P-4 with revisions dated May 22, 2017.

5. DRAWING ED-1: a) CHANGE the title to: "TREATMENT BUILDING FIRST FLOOR EQUIPMENT PLANT – DEMO".

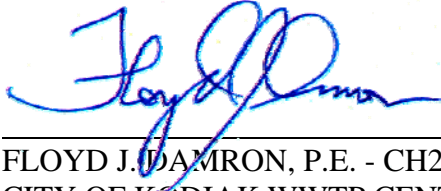
b) CHANGE the equipment plan title to, "TREATMENT BUILDING FIRST FLOOR EQUIPMENT PLAN".

6. DRAWING E-2: a) CHANGE the title to: "TREATMENT BUILDING FIRST FLOOR EQUIPMENT PLAN".

b) CHANGE the equipment plan title to, "TREATMENT BUILDING FIRST FLOOR EQUIPMENT PLAN".

7. DRAWING E-3: a) CHANGE the title to: "TREATMENT BUILDING SECOND FLOOR EQUIPMENT PLAN".
- b) CHANGE the equipment plan title to, "SECOND FLOOR EQUIPMENT PLAN".

All Bidders shall acknowledge receipt and acceptance of this Addendum No. 1 on the Bid Form. Bid Forms submitted without acknowledgment will be considered in nonconformance.



FLOYD J. DAMRON, P.E. - CH2M PROJECT MANAGER, MAY 22, 2017
CITY OF KODIAK WWTP CENTRIFUGE INSTALLATION PN 17-03/7519

END OF ADDENDUM NO. 1

The following are the questions asked from potential bidders and the respective responses from the Engineer and are included here for clarification purposes. Nothing provided in the responses provided modify the project's Bidding Requirements and Contract Documents.

Bidder Questions: Question No. 1:

Can shop drawings for the Owner-Furnished equipment be provided? The key issues of concern are the equipment connection points and seismic requirements.

Answer No. 1: Yes. Relevant portions of the Andritz Centrifuge shop drawings are attached for the convenience of the Bidders, as requested.

Question No. 2:

What is the Engineer's Estimate for this project?

Answer No. 2 by the City Engineer: That information will be provided at Bid Opening on June 7, 2017.

ATTACHMENTS: A) Revised Drawing P-4 with revisions dated May 22, 2017 titled: "Treatment Building Centrifuge Sections"

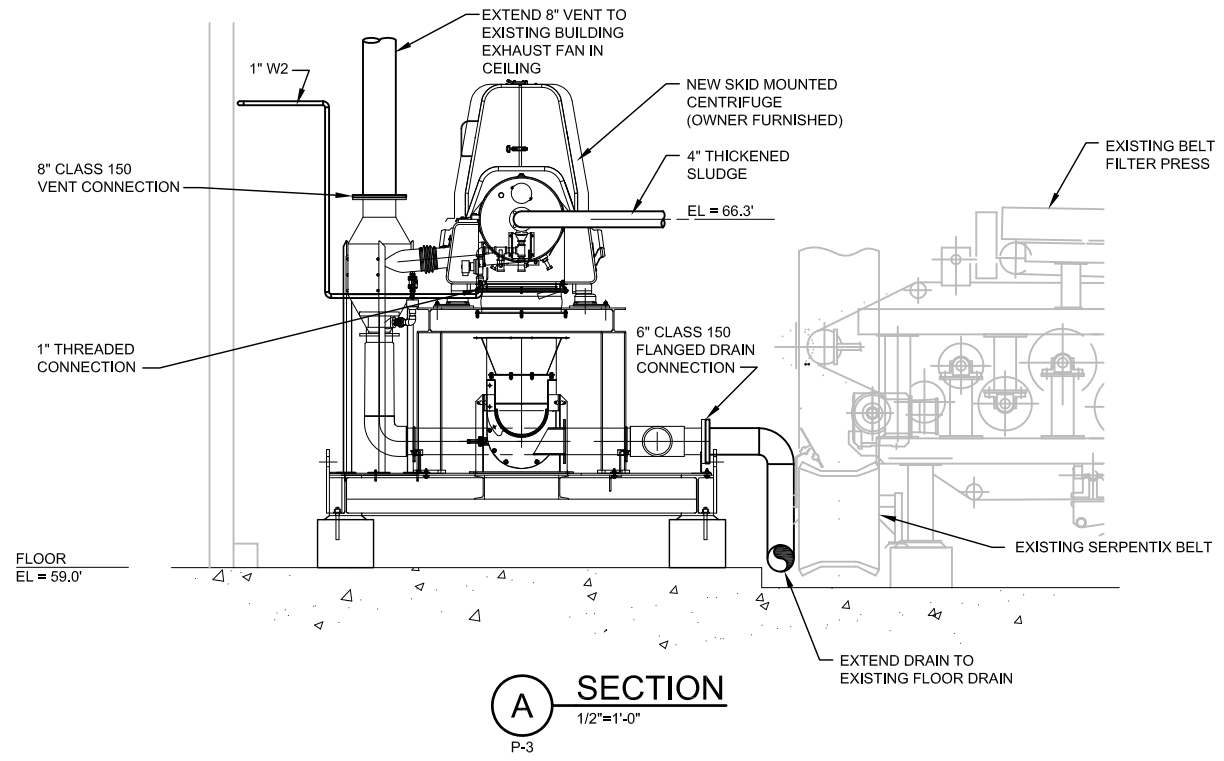
B) Andritz Shop Drawings:

Andritz Centrifuge D2L-D5LX Standard Machine Wiring:

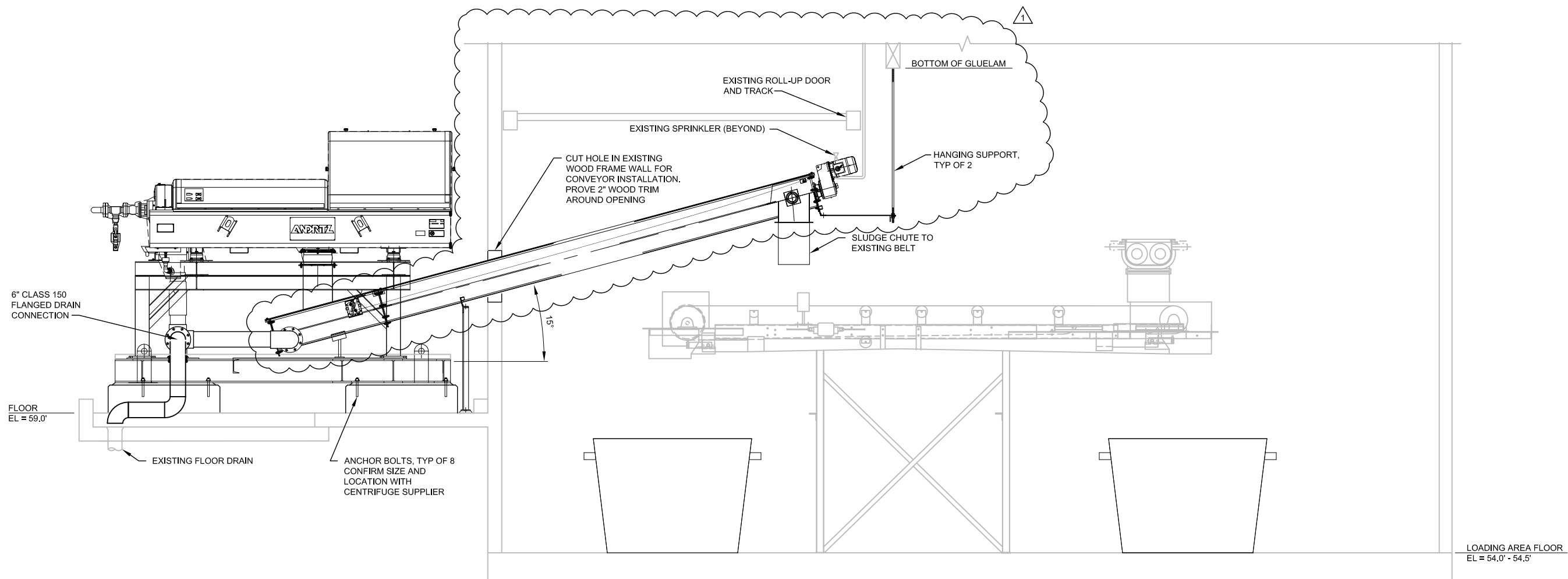
1. Drawing No. CFG-MW-BOM
2. Drawing No. CFG-MW-FLD
3. Drawing No. CFG-MW-PP

Andritz D4L Centrifuge Skid Assembly

4. Drawing No. M826519-3



A SECTION
1/2"=1'-0"
P-3



B SECTION
1/2"=1'-0"
P-3

NO.	DATE	REVISION	BY	APVD
1	5/22/17	ADDENDUM NO. 1		
DR		CHK	APVD	
I. VANBLANKENSTEIN		R. BENFIELD	F. DAMRON	F. DAMRON

WWTP CENTRIFUGE INSTALLATION
CITY OF KODIAK
KODIAK, ALASKA

ch2m
PROCESS
TREATMENT BUILDING
CENTRIFUGE SECTIONS

VERIFY SCALE	
BAR IS ONE INCH ON ORIGINAL DRAWING.	
DATE	MAY 2017
PROJ	681457
DWG	P-4
SHEET	8

100% SUBMITTAL
REUSE OF DOCUMENTS: THIS DOCUMENT AND THE IDEAS AND DESIGNS INCORPORATED HEREIN AS AN INSTRUMENT OF PROFESSIONAL SERVICE, IS THE PROPERTY OF CH2M HILL AND IS NOT TO BE USED, IN WHOLE OR IN PART, FOR ANY OTHER PROJECT WITHOUT THE WRITTEN AUTHORIZATION OF CH2M HILL. © CH2M HILL 2016. ALL RIGHTS RESERVED.



CENTRIFUGE D2L-D5LX MACHINE WIRING

(2) IFM EFECTOR VKV SERIES VIBRATION MONITOR + (2) WEED TEMPERATURE TRANSMITTERS

COMPONENTS INSTALLED ON CENTRIFUGE MACHINE

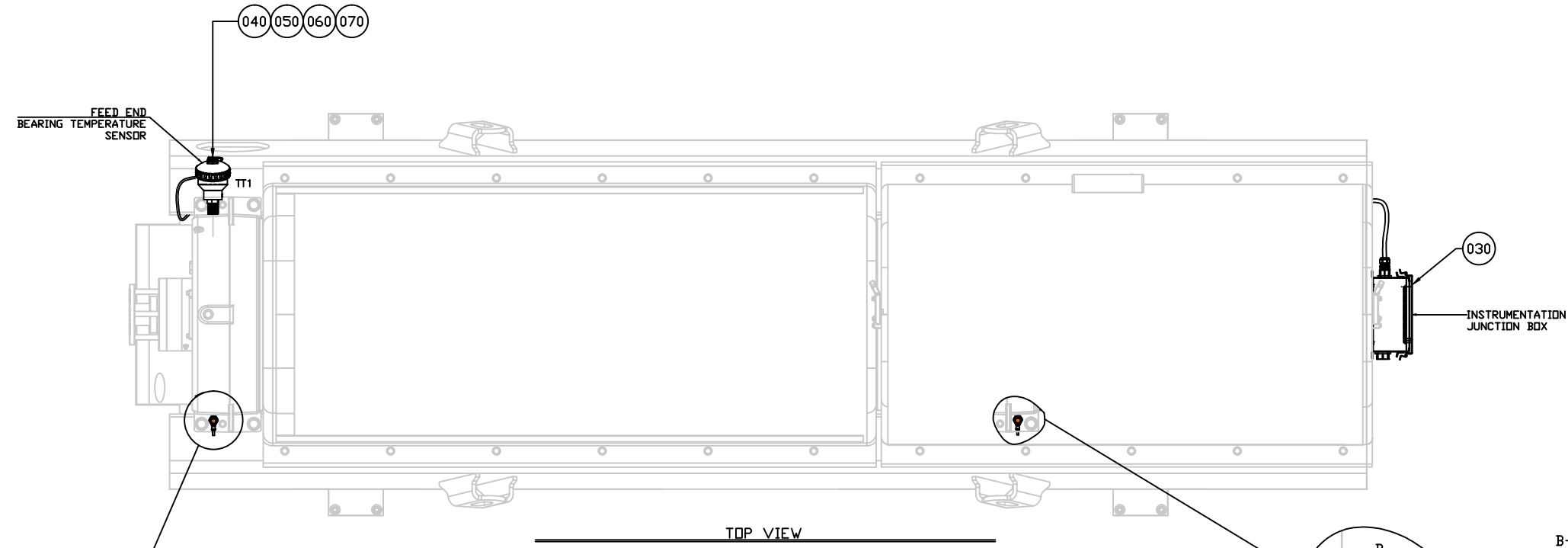
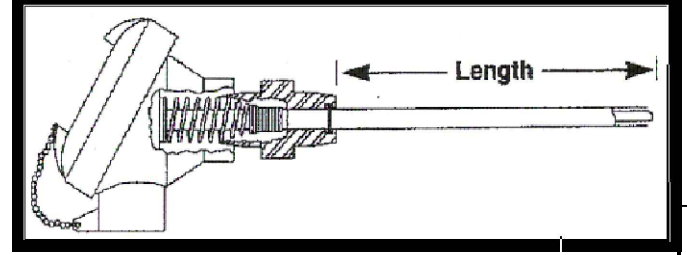
ITEMS	QTY	SAP #	MFG PART NO	MFG	DESCRIPTION	TAGS
010	2	132138289	VKV022	IFM EFECTOR	VITRATION MONITOR, 4 WIRE, 10...82VDC, RANGE RMS: 0...5mm/s, M12 CONNECTOR, OUTPUTS (1) 4...20mA (1) PNP	VT1 VT2
020	2	131073536	EVC006	IFM EFECTOR	CORDSET ANGLED CONNECTOR M12 FEMALE 5 PIN - 4 WIRE, LENGHT 10M	CBLJB1-01 CBLJB1-02
030	1	300651354		ANDRITZ	CENTRIFUGE STANDARD D-SERIES INSTRUMENTATION BOX ASSEMBLY	
040	2	131396161	4HQT3U+000+0400F	WEED	TEMPERATURE TRANSMITTER 4-20mA OUPUT, HEAD MOUNT SENSOR-MATE RTD, 3 WIRE, UPSCALE, POSITIVE, FARENHEIT	TT1 TT2
			110-01B-A-3-B-24-FB1	WEED	FIELD CUT RTD 100ohm PLATIUM, 500F MAX	
			2A00D1	WEED	GENERAL PURPOSE ALUMINUM CONNECTION HEAD CODE 2, 1/2" NPT X 3/4 NPT	
050	25 FT	131396433	WIRE-MC-TC16GA2-X01	COLEMAN	TRANSMITTER CABLE 16AWG 2 COND SHLD UL APPROVED	
060	5	131395462	2671	THOMAS & BETTS	3/8" STRAIN RELIEF FITTING 2671	
070	5	131395454	RB50-38	APPLETON	BUSHING 1/2" TO 3/8" REB	
080	3	131395401	ST-1	MYERS	1/2" HUB SCRU-TITE	
090	2	131395455	RB75-50	APPLETON	BUSHING 1/2" X 3/8" REB	
0100	4	131161176			SPRING WASHER: DIN127	
0110	4	131398400			PLAIN WASHER ISO 7093-1 OD=15	
0120	4	100003237			HEX HEAD SCREW ISO 4017	

NOTES <small>THIS DRAWING IS COPY RIGHTED THIS DRAWING IS A TRADE SECRET AND ONLY ENTRUSTED TO THE RECEIVER FOR HIS PERSONAL USE. WITHOUT THE WRITTEN CONSENT OF ANDRITZ SEPARATION INC. IT MUST NOT BE COPIED NOR MADE AVAILABLE TO THIRD PARTIES, INCLUDING COMPETITORS, NOR MADE ACCESSIBLE TO SUCH PARTIES. ANY ILLEGAL USE BY THE RECEIVER OR THIRD PARTIES FOR WHICH HE IS RESPONSIBLE CAN CONSTITUTE A CAUSE FOR LEGAL ACTION. THIS DRAWING MUST BE RETURNED ON REQUEST OF THE COMPANY.</small>						ESTIMATED WEIGHT IN LBS: UNLESS OTHERWISE SPECIFIED: DIMENSIONS ARE IN INCHES FABRICATION TOLERANCES .XXX±.040 ANG±.1° HOLE±.020 MACHINING TOLERANCES .XXX±.005 ANG±.5° HOLE±.020 MILL FINISH ALL OVER	DRAWN BY: JLR	DATE 12/21/16	 <small>ANDRITZ SEPARATION INC. 1010 COMMERCIAL BLVD. SOUTH ARLINGTON, TEXAS 76001 PHONE: (817) 465-5611</small>	TITLE 300834223 CFG D2L-D5LX STD MACHINE WIRING (VM+TT) BILL OF MATERIALS						
											CHECKED BY: JM	DATE 12/21/16	SIZE B	DRAWING NUMBER CFG-MW-BOM	REV 1	
											APPROVED BY: CP	DATE 12/21/16		PREV. SHEET: 2	NEXT SHEET: 2	SHEET 1
											LOCATION: 					

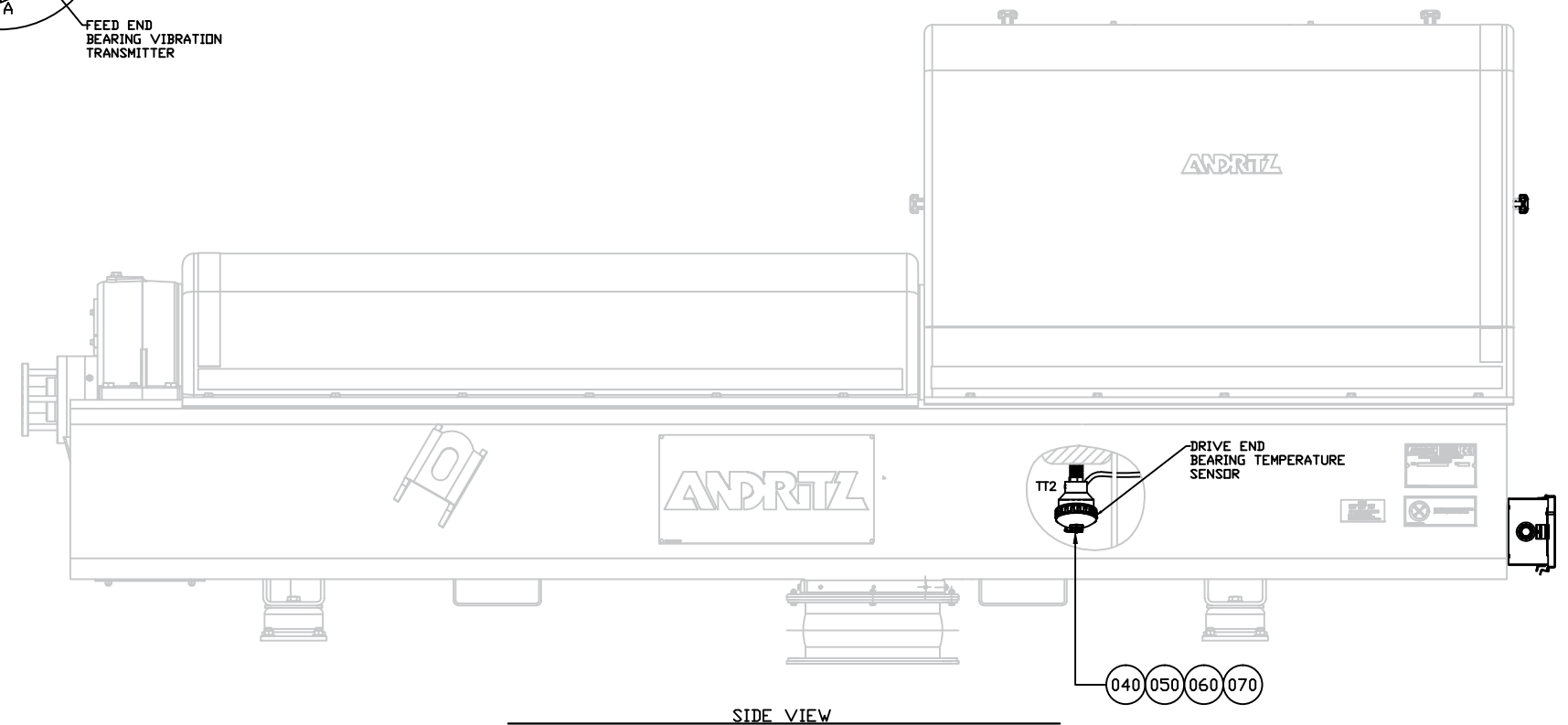
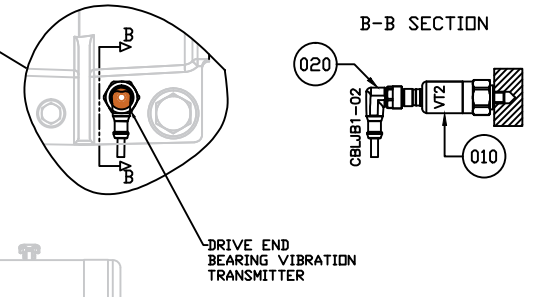
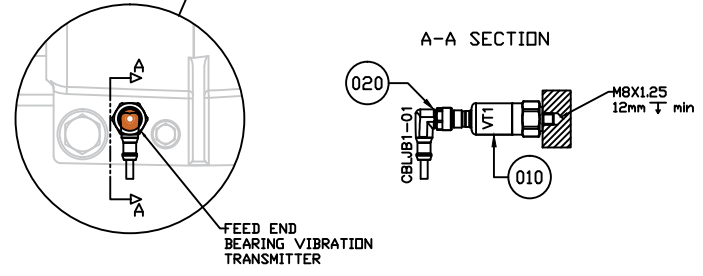
REV	EIR	REVISION	BY	APVD	DATE
1		REMOVED DISCONTINUED MODELS	JLR	CP	02/01/17
0		INITIAL RELEASE	JLR	CP	12/21/16

8 7 6 5 4 3 2 1

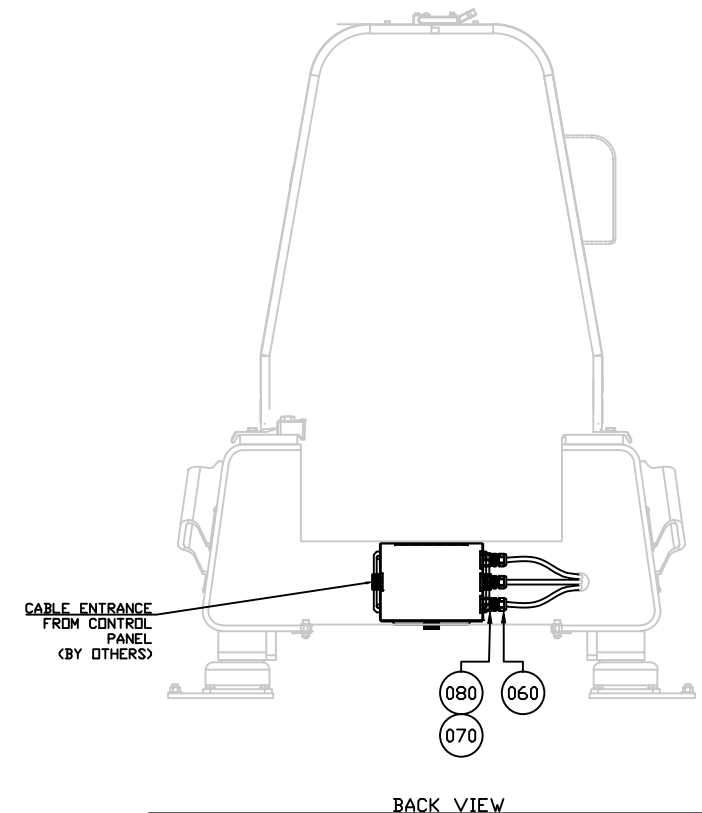
THERMOCOUPLE LENGTH			
SERIES	FEED END LENGTH (in)	DRIVE END LENGTH (in)	NOTES
D2L	5	1 1/4	WITH BELL REDUCER, THEO CHOCOLATE B14894
D2LL	6 3/8	1 1/4	WITH BELL REDUCER NANAIMO, IMTT
D3L	7	2	
D4L	7 1/4	2 1/8	
D4LL	7 1/4	2 1/8	
D5L	9 1/4	2 1/2	
D5LX	9 1/8	2 5/8	



TOP VIEW



SIDE VIEW



BACK VIEW

NOTES				
1	REMOVED DISCONTINUED MODELS	JLR	CP	02/01/17
0	INITIAL RELEASE	JLR	CP	12/21/16

THIS DRAWING IS COPY RIGHTED THIS DRAWING IS A TRADE SECRET AND ONLY ENTRUSTED TO THE RECEIVER FOR HIS PERSONAL USE, WITHOUT THE WRITTEN CONSENT OF ANDRITZ SEPARATION INC. IT MUST NOT BE COPIED NOR MADE AVAILABLE TO THIRD PARTIES, INCLUDING COMPETITORS, NOR MADE ACCESSIBLE TO SUCH PARTIES. ANY ILLEGAL USE BY THE RECEIVER OR THIRD PARTIES FOR WHICH HE IS RESPONSIBLE CAN CONSTITUTE A CAUSE FOR LEGAL ACTION. THIS DRAWING MUST BE RETURNED ON REQUEST OF THE COMPANY.

REV	EIR	REVISION	BY	APVD	DATE
1		REMOVED DISCONTINUED MODELS	JLR	CP	02/01/17
0		INITIAL RELEASE	JLR	CP	12/21/16

ESTIMATED WEIGHT IN LBS:	DRAWN BY:	DATE
	JLR	12/21/16
UNLESS OTHERWISE SPECIFIED: DIMENSIONS ARE IN INCHES FABRICATION TOLERANCES XXX±.040 ANG±.1° HOLE±.020 MACHINING TOLERANCES XXX±.005 ANG±.5° HOLE±.020 MILL FINISH ALL OVER	CHECKED BY:	DATE
	JM	12/21/16
THIRD ANGLE PROJECTION	APPROVED BY:	DATE
	CP	12/21/16
	LOCATION:	
	CFG-FLD	

ANDRITZ
ANDRITZ SEPARATION INC.
1010 COMMERCIAL BLVD. SOUTH
ARLINGTON, TEXAS 76001
PHONE: (817) 465-5611

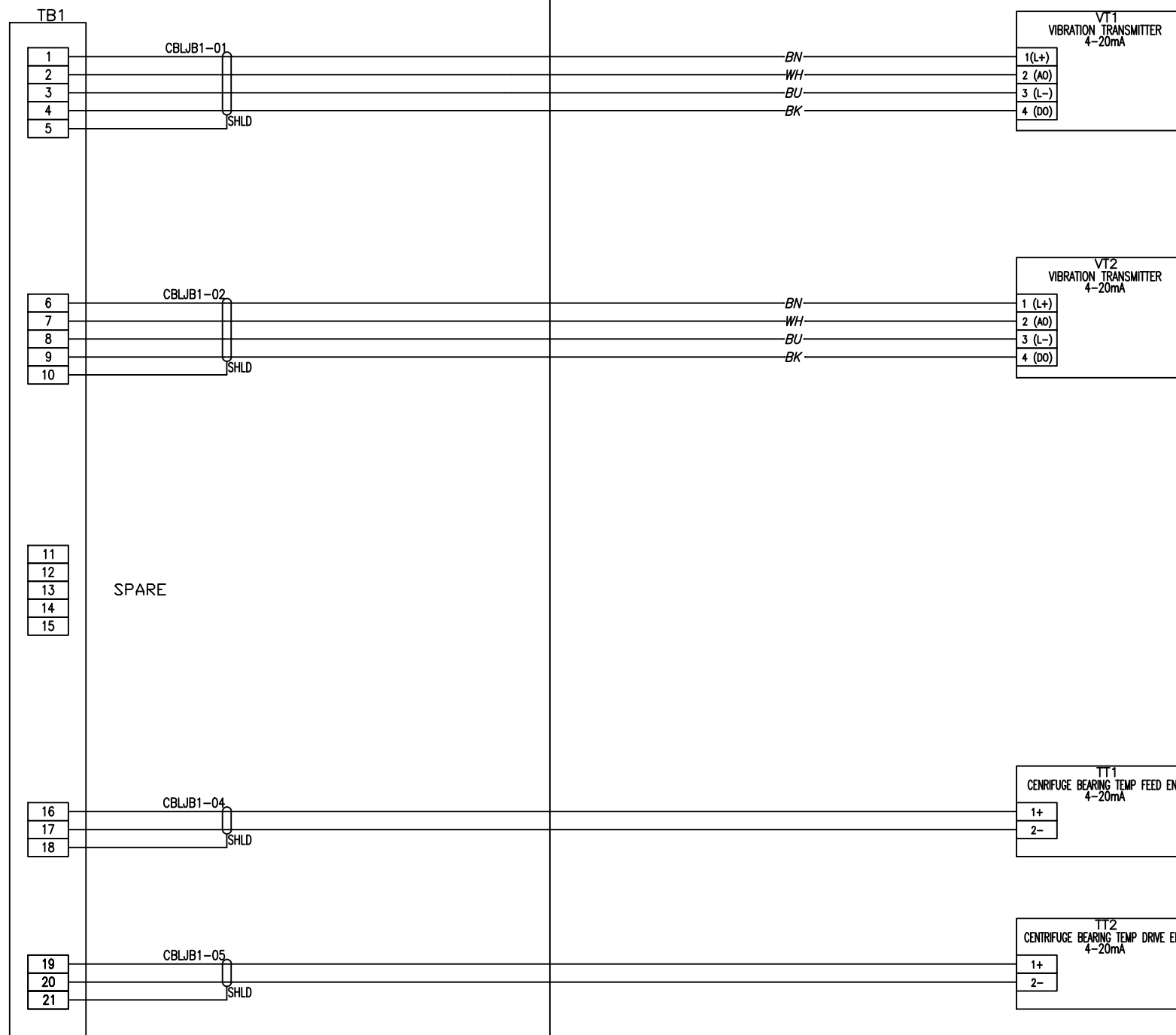
TITLE		300834223	
CFG D2L-D5LX STD MACHINE WIRING (VM+TT)		MACHINE MOUNTED COMPONENTS	
SIZE	DRAWING NUMBER	REV	
B	CFG-MW-FLD	1	
PREV. SHEET:	NEXT SHEET:	SHEET OF	
1	3	2 OF 3	

8 7 6 5 4 3 2 1

CENTRIFUGE JB (CFG-JB1)

CENTRIFUGE MACHINE

NOTES



CENTRIFUGE PANEL MUST SUPPLY 24VDC CONTROL POWER SOURCE AND GROUND TO CENTRIFUGE JUNCTION BOX FOR PROPER OPERATION OF INSTRUMENTS.

- THIS POINT TO POINT DRAWING IS DERIVED FROM PROJECT SCHEMATICS. REFER TO PROJECT SCHEMATICS FOR FURTHER CLARIFICATION.
- SHIELDED CABLE 16GA. (SIGNAL)
 RUN ALL SHIELDED CABLE IN SEPARATE CONDUIT FROM POWER OR CONTROL CONDUCTORS.
 ALL SHIELDED CABLE GROUND CONDUCTORS SHOULD BE GROUNDED AT 1 END ONLY, PREFERABLY IN THE CONTROL PANEL.

NOTES

THIS DRAWING IS COPYRIGHTED. THIS DRAWING IS A TRADE SECRET AND ONLY ENTRUSTED TO THE RECEIVER FOR HIS PERSONAL USE. WITHOUT THE WRITTEN CONSENT OF ANDRITZ SEPARATION INC., IT MUST NOT BE COPIED NOR MADE AVAILABLE TO THIRD PARTIES, INCLUDING COMPETITORS, NOR MADE ACCESSIBLE TO SUCH PARTIES. ANY ILLEGAL USE BY THE RECEIVER OR THIRD PARTIES FOR WHICH HE IS RESPONSIBLE CAN CONSTITUTE A CAUSE FOR LEGAL ACTION. THIS DRAWING MUST BE RETURNED ON REQUEST OF THE COMPANY.

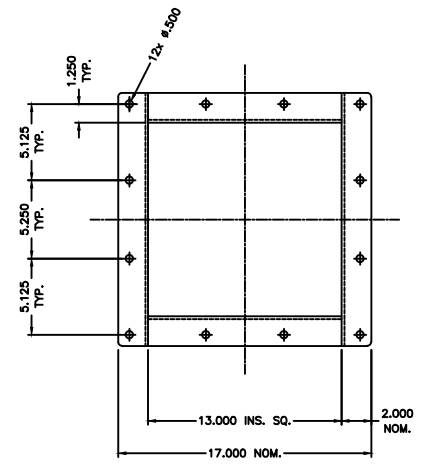
REV	EIR	REVISION	BY	APVD	DATE
1		REMOVED DISCONTINUED MODELS	JLR	CP	02/01/17
0		INITIAL RELEASE	JLR	CP	12/21/16

ESTIMATED WEIGHT IN LBS:	DRAWN BY:	DATE
	JLR	12/21/16
UNLESS OTHERWISE SPECIFIED: DIMENSIONS ARE IN INCHES FABRICATION TOLERANCES XXX±.040 ANG±.1° HOLES±.020 MACHINING TOLERANCES XXX±.005 ANG±.5° HOLES±.020 MILL FINISH ALL OVER	CHECKED BY:	DATE
	JM	12/21/16
	APPROVED BY:	DATE
	CP	12/21/16
THIRD ANGLE PROJECTION	LOCATION:	

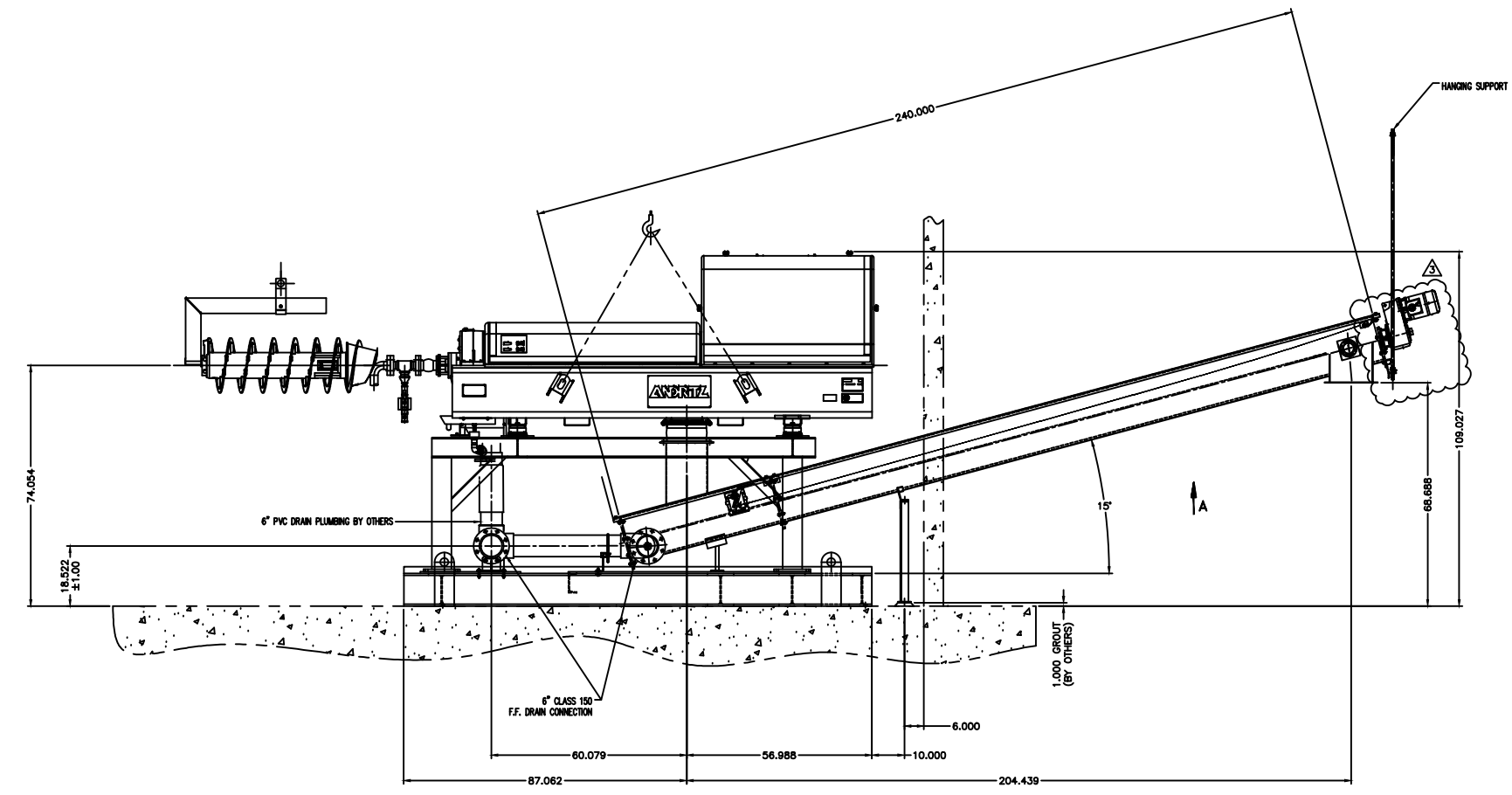
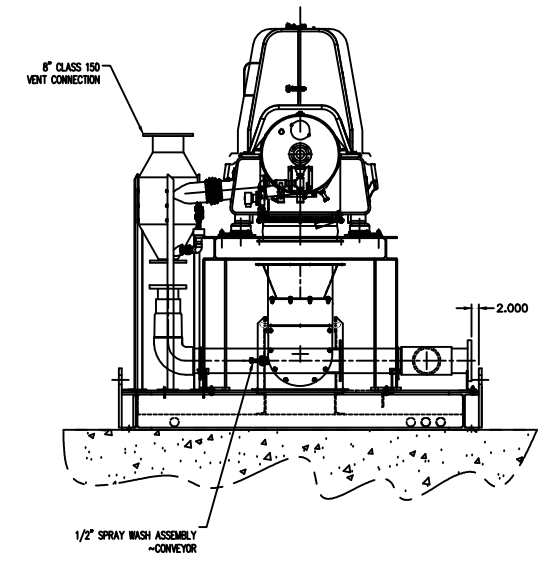
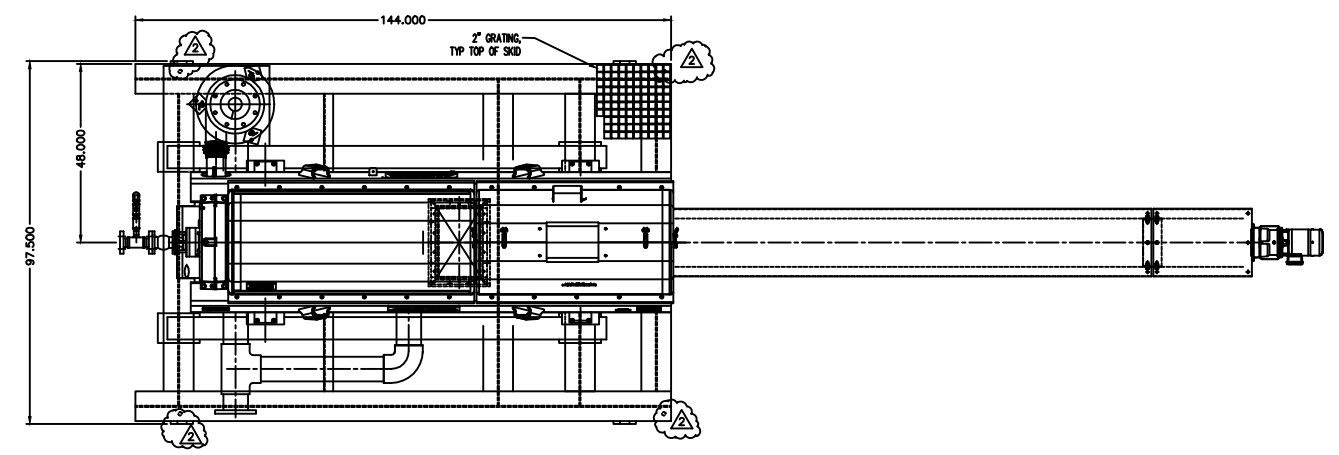
ANDRITZ

ANDRITZ SEPARATION INC.
 1010 COMMERCIAL BLVD. SOUTH
 ARLINGTON, TEXAS 76001
 PHONE: (817) 465-5611

TITLE	300834223	
	CFG D2L-D5LX STD MACHINE WIRING (VM+TT) POINT TO POINT SCHEMATIC	
SIZE	DRAWING NUMBER	REV
B	CFG-MW-PP	1
PREV. SHEET:	NEXT SHEET:	SHEET OF
2		3 OF 3



VIEW A



- NOTES:**
1. ALL METAL SURFACES ARE TO BE FREE OF ALL BURRS, SHARP EDGES, SCALE AND ANY OTHER SURFACE CONTAMINANTS.
 2. CENTRIFUGE SHIPS MOUNTED ON SKID.
 3. LIFTING FRAME AND SCREW CONVEYOR SHIP FOR FIELD INSTALLATION.
 4. PACKAGE DIMENSIONAL TOLERANCES ARE $\pm 1/2$ ".

THIS DRAWING IS A TRAVEL COPY AND IS NOT TO BE USED FOR CONSTRUCTION. THE ORIGINAL DRAWING IS TO BE KEPT AT THE DESIGNER'S OFFICE. ANY CHANGES TO THIS DRAWING MUST BE APPROVED BY THE DESIGNER. THIS DRAWING IS THE PROPERTY OF ANDRITZ SEPARATION, INC. AND IS NOT TO BE REPRODUCED OR TRANSMITTED IN ANY FORM OR BY ANY MEANS, ELECTRONIC OR MECHANICAL, INCLUDING PHOTOCOPYING, RECORDING, OR BY ANY INFORMATION STORAGE AND RETRIEVAL SYSTEM. WITHOUT THE WRITTEN PERMISSION OF ANDRITZ SEPARATION, INC. THIS DRAWING IS NOT TO BE USED FOR ANY OTHER PROJECT. ANY UNAUTHORIZED USE OF THIS DRAWING IS PROHIBITED. ANDRITZ SEPARATION, INC. 1010 COMMERCIAL BLVD. SOUTH ARLINGTON, TEXAS 76001 PHONE: (817) 465-3611

REV	BY	DATE	DESCRIPTION	APP'D	DATE
3	AM	04/18/17	MOVED DRIVE TO DISCHARGE END	OG	AM
2	AM	4/5/17	ADDED ANCHOR HOLES	AM	AM
1	OG	03/06/17	UPDATED CONVEYOR LENGTH, ANGLE, DIMS., & CHUTE	OG	OG
0	OG	01/31/17	FOR APPROVAL	OG	OG

ESTIMATED WEIGHT IN LBS	DRAWN BY: QG	DATE: 01/31/17	TITLE: D4L CENTRIFUGE SKID ASSEMBLY
UNLESS OTHERWISE SPECIFIED: DIMENSIONS ARE IN INCHES	CHECKED BY:	DATE:	ANDRITZ SEPARATION, INC. 1010 COMMERCIAL BLVD. SOUTH ARLINGTON, TEXAS 76001 PHONE: (817) 465-3611
FABRICATION TOLERANCES: HOLE DIA. AND 1/2\"/>			
MACHINING TOLERANCES: HOLE DIA. AND 1/2\"/>			
THIRD ANGLE PROJECTION	SCALE: 1/16	FILE: M826519	SHEET 1 OF 1